



Photovoltaic bracket installation model parameter table



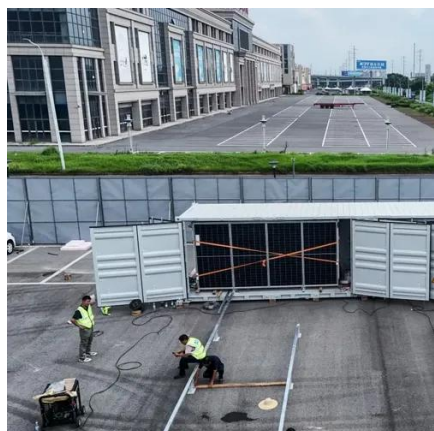


Overview

Photovoltaic bracket standard parameter specification necessary for modeling and analysis of solar power systems. The results obtained help to quickly and visually assess a given. rformance,safety and longevity of solar PV system. The sizing principles for grid connected and stand-alone PV systems are bas m is suitable for the local climate and geography. To ensure the safety of PV modules under extreme static conditions,a detailed ana ysis of a series of extreme scenarios wil ort model consists of six spans,each with a span of 2 m.



Photovoltaic bracket installation model parameter table

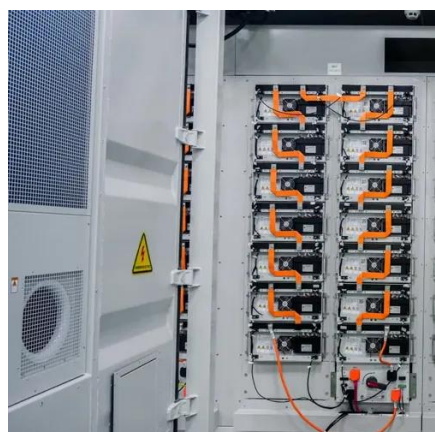


[Photovoltaic Bracket Models and Parameter Diagrams: Essential ...](#)

Photovoltaic bracket models and their parameter diagrams aren't just technical paperwork - they're the blueprint for durable, efficient energy generation. Well, here's the thing: most installers ...

[Photovoltaic flexible bracket comparison parameter table](#)

To investigate the distribution patterns of maximum deflection, axial force, and acceleration in a flexible PV array group, Table 7 and Table 8, respectively, present the comparisons of average deflection, ...



[Photovoltaic panel bracket model parameters and specifications](#)

In the photovoltaic (PV) solar power plant projects, PV solar panel (SP) support structure is one of the main elements and limited numerical studies exist on PVSP ground mounting steel frames to

[Photovoltaic bracket specification parameter table](#)

Download Table , Parameter specification of MXS 60 PV module. from publication: Comparison of Perturb & Observe and Fuzzy Logic in Maximum Power Point Tracker for PV Systems , In this



[Photovoltaic bracket standard parameter table](#)

In the last decade, accurate parameter estimation in photovoltaic (PV) system modeling has gained significant attention due to its crucial role in overall system performance.



[Photovoltaic bracket standard parameter specification table](#)

photovoltaic parameters and number of cells of the PV modules at standard test condition (STC), which are reported in the manufacturer's datasheet, are shown in Table 1.



[Photovoltaic bracket installation specifications and models table](#)

Thanks for choosing Solarspace Solar PV modules. This guide contains information regarding the installation and safe handling of Solar-space photovoltaic module (hereafter is referred to as



[Photovoltaic bracket model and specification table](#)



Based on the above equations and using the electrical specifications presented in Table 1.1, the PV system model has been developed using LABVIEW as shown in Figure 5.



[Photovoltaic bracket selection design drawings](#)

Technical drawings showing installation of integrated solar PV and solar thermal panels in slate and tile roofs and solar thermal plumbing systems. Toggle navigation.

[Photovoltaic bracket usage specification parameter table](#)

The characteristic parameters of the PV cells used in the examples are shown in Table 1. to the ideas and methods described in Section 3.3, the influence of a large-scale PV grid-connected





Contact Us

For catalog requests, pricing, or partnerships, please visit:

<https://iwap.com.pl>

Phone: +34 919 456 782

Email: info@iwap.com.pl

Scan the QR code to access our WhatsApp.

