



Photovoltaic bracket foot reinforcement





Overview

A Solar L Feet Bracket is a specialized metal bracket used in solar panel installations to provide a secure connection between the mounting rails and the roof. The “L” shape allows for a strong and stable attachment to different roof types while distributing the panel's weight evenly. Reinforcement of PV racking is an important part of ensuring the long-term stable operation of PV power generation systems. Changes in installation details, the introduction of proper flashing and subtle changes to bracket / flashing kits have lead to significant savings for installers and. SolarFoot is a simple, cost-effective pedestal for L-Foot attachment of rail-mounted solar PV. The bracket is set up with long and short legs before and after the bracket, and the legs are bolted to the foundation respectively, one end of the diagonal brace is supported at the foot of the long column. Future Energy Steel offers a wide range of high-quality photovoltaic brackets specifically engineered for modern solar energy systems.



Photovoltaic bracket foot reinforcement



[Photovoltaic ground bracket installation options](#)

The installation selection of photovoltaic ground brackets is mainly based on factors such as the fixing method of the bracket, terrain requirements, material selection, and the weather resistance, strength, ...

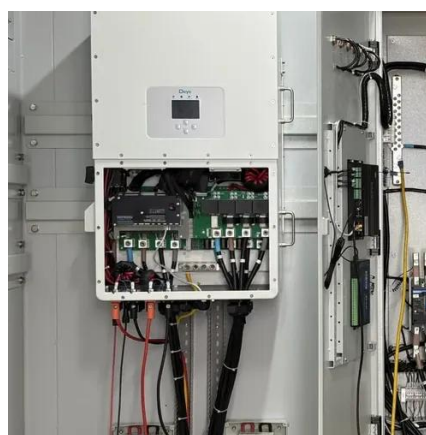


[Photovoltaic Brackets Manufacturers, Suppliers, Designers](#)

Future Energy Steel offers a wide range of high-quality photovoltaic brackets specifically engineered for modern solar energy systems. Designed for durability and precision, our brackets ensure stability ...

Reinforcement of photovoltaic mounts

Enhance the structural strength and stability of PV mounts using components such as sliding sheave axles, motorized pins and wire ropes, especially in the state of wind protection.



[CHIKO ground photovoltaic bracket: lightweight, strong, durable and](#)

High strength and durability: The bracket of CHIKO Solar is made of high-quality steel or aluminum, which has excellent strength and durability and can withstand harsh weather conditions and external ...



[Installing Mounting Feet and Brackets for PV](#)

The installation of mounting feet / brackets for PV racking systems on asphalt shingle roofs has come a long way over the years.



[SolarFoot , Solar Panels on Metal Roof , S-5!](#)

Looking to Mount Solar Using Rails on Exposed-Fastener Metal Roofs? SolarFoot is a simple, cost-effective pedestal for L-Foot attachment of rail-mounted solar PV. The bracket can be used to mount ...



[Commonly used solar steel bracket structure type](#)

Single-column PV support structure mainly consists of key components such as main beam, secondary beam, front support, rear support, steel column, hoop and monopile foundation, etc.

[Cement pier photovoltaic bracket installation process](#)



The compacted grout at the bottom provides the necessary support for the piers to push up through the attached bracket at the footing of the foundation, lifting it to its original

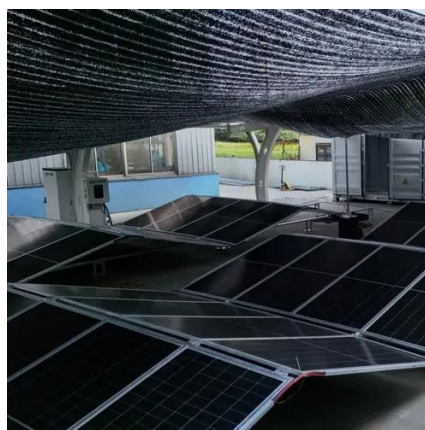


[Solar L Feet Bracket: Essential Guide for Secure Solar Panel Mounting](#)

Discover the importance of Solar L Feet Brackets for solar panel installations. Learn about their materials, installation, benefits, and how they enhance system stability and longevity.

[Ground Mounted PV Solar Panel Reinforced Concrete Foundation](#)

For illustration and purposes, the following figures provide a sample of the input modules and results obtained from an spMats model created for the ground mounted PV solar panel reinforced concrete ...





Contact Us

For catalog requests, pricing, or partnerships, please visit:

<https://iwap.com.pl>

Phone: +34 919 456 782

Email: info@iwap.com.pl

Scan the QR code to access our WhatsApp.

