



Philippines communication base station inverter grid connection construction time





Philippines communication base station inverter grid connection cons

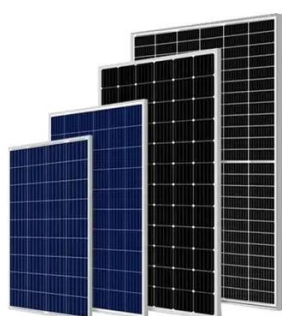


Introduction to the communication base station inverter grid-connected

In an era where seamless communication is non-negotiable, outdoor inverters for communication base stations play a pivotal role in maintaining uninterrupted connectivity.

[Grid Enhancement: The Philippines' focus on transmission](#)

The NGCP has envisaged an investment of about PhP 905 billion in the Philippines's high voltage grid between 2024 and 2034. These projects are presently in the consultation stage.



[National Grid Corporation of the Philippines](#)

As part of its holistic approach to supporting a reliable energy industry, NGCP conducted its annual stakeholder consultation to discuss the Transmission Development Plan (TDP) for 2025- ...

[Construction cycle of communication base station inverter](#)

Research and Implementation of 5G Base Station Location Based on factors such as base station construction cost, signal coverage, and Euclidean distance between base stations, this paper



[Communication Base Station Inverter Solution Project Overview](#)

In short, integrating solar energy systems into Communication Base Station Energy Solutions Due to harsh climate conditions and the absence of on-site personnel to maintain fuel generators, the ...



[Ground wave communication base station inverter grid connection](#)

This paper provides a thorough examination of all most aspects concerning photovoltaic power plant grid connection, from grid codes to inverter topologies and control.



[Communication base station inverter grid connection construction](#)

Multi-source energy integration: In some base stations, inverters can integrate multiple energy sources (such as power grid, solar energy, wind energy) to ensure the stability and reliability ...



[WiMAX is the answer to a Smart Grid challenge in Philippines](#)



With a single sector per base station design it can accommodate as many sectors as required at a given site, simply by adding the requisite number of base stations as driven by coverage, bandwidth and ...



CONSTRUCTION OF BASE STATIONS FOR GUYED TOWERS ...

Prepare a monthly progress report which shall include an overall progress chart based on actual physical accomplishment of construction work and a progress chart based on actual value of ...



Contact Us

For catalog requests, pricing, or partnerships, please visit:

<https://iwap.com.pl>

Phone: +34 919 456 782

Email: info@iwap.com.pl

Scan the QR code to access our WhatsApp.

