



PV inverter numbering rules





Overview

This piece shows how to align NEC Labeling and IEC Labeling, build inspector-ready PV ESS Documentation, and avoid red tags. Code-compliant markings do more than pass. and current are regulated at the string level. SolarEdge inverters operate with a fixed string voltage regardless of the permanent label at the PV disconnect rating, the calculated value should be used. In this case the calculated value is higher than the inverter input current rating so the. The NEC690 Building Inspector's Guide is a set of reference materials developed for Building Inspectors and AHJ Officials as it relates to Article 690, of the National Electrical Code (NEC 2014) for Photovoltaic Warning Labels. The Guide also covers ANSI Z535. 4(B)] (numbers in brackets refer to sections in the NEC throughout this document). Without this specific identification process, an unacceptable amount of review would be necessary to approve an. Article 705 covers the installation of interconnected generators, solar photovoltaic systems, and fuel cell systems that operate in parallel with a primary source of electricity. Primary sources of electricity would be electric utility power or on-site power source (s). See other important. A0---0. 7kW single MPPT single phase Grid-tie PV inverter□ A1---1kW single MPPT single phase Grid-tie PV inverter□ A2---1.



PV inverter numbering rules



STEP 2: PV SYSTEM ELECTRICAL CODE INSTALLATION ...

This requirement is to limit the number of circuits to those configurations that are common for current residential PV systems. Most string inverters today have two, three, or four separate DC inputs. By ...

Solar Photovoltaic Systems, based on 2017 NEC

When determining the number of disconnects per service per 230.71 (A), don't count the PV disconnect (s) connected on the supply side of service equipment. It's not a service disconnect as defined in ...



- LiFePO₄
- Wide temp: -20°C to 55°C
- Easy to expand
- Floor mount&wall mount
- Intelligent BMS
- Cycle Life:≥6000
- Warranty :10 years



PV LABELING WHITE PAPER

One of the goals of the committee was to organize and re-number various sections. The panel consolidated similar labeling requirements, found in many sections of the code, into a single section.

Photovoltaic inverter numbering standard rules

The paper presents the results of an experimental study carried out on three PV Inverters widely available in the EU in accordance with the EU network code NC RfG, standard EN 50549-1:2019 and



Building Inspector's Guide

The NEC690 Building Inspector's Guide is a set of reference materials developed for Building Inspectors and AHJ Officials as it relates to Article 690, of the National Electrical Code (NEC 2014) for ...

Codes and Standards

The project team provides leadership and technical assistance in partnering with industry experts for accelerating revisions to these foundational codes and standards governing PV system ...



Serial Number Naming Rule : Solis North America

(Temporary Mode number is A7) A5---3kW single MPPT single phase Grid-tie PV inverter?
(Temporary Mode number is A8) A6---3.6kW single MPPT single phase Grid-tie PV ...

PV Power Source Labeling in a SolarEdge system

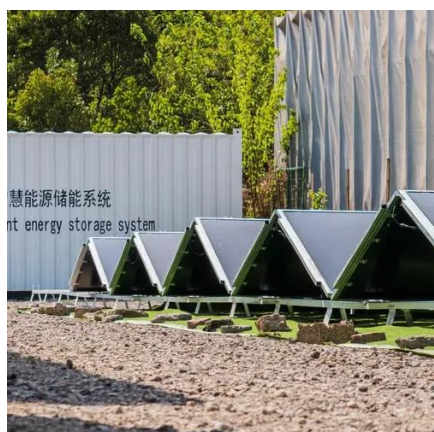


Under normal operating conditions, the string current is regulated by the inverter and will never exceed the maximum input current rating of the inverter.



Photovoltaic inverter number identification style

What technical information should a PV inverter have? In general, the technical information for a PV inverter will include both the peak efficiency (usually between 95% and 98% depending on the ...



Ultimate Guide to NEC/IEC Labeling and Documentation for PV+ESS

Pro-level NEC Labeling and IEC Labeling for PV ESS Documentation. Get crosswalks, label specs, and a repeatable pack that speeds approvals for solar plus storage.





Contact Us

For catalog requests, pricing, or partnerships, please visit:

<https://iwap.com.pl>

Phone: +34 919 456 782

Email: info@iwap.com.pl

Scan the QR code to access our WhatsApp.

