



Outdoor base station equipment expansion construction





Overview

This article describes the development of the series of radio base stations equipments applicable to various implementation areas, to economically expand the indoor and outdoor areas covered by FOMA services. Introduction To expand the areas covered by Freedom Of Mobile multi-media Access. A typical communication base station combines a cabinet and a pole. Within modern network deployments driven by 5G and edge infrastructure expansion, the cabinet has become an active player in network reliability. It protects critical hardware. The TetraFlex® Outdoor System is the most user-friendly, flexible and cost-effective TETRA infrastructure system available. In addition, we also provide a variety of operational support services to help operations.



Outdoor base station equipment expansion construction



[Base Station Construction , KYOCERA Mirai Envision](#)

We have one-stop services from design to construction works for outdoor and indoor facilities. Our solution includes a wide range of network facilities construction such as indoor LAN and optical cable wiring.

[5G Base Station Outdoor Integrated Cabinet Market Scope](#)

Governments and private sector stakeholders are prioritizing 5G network expansion to support smart city initiatives, IoT applications, and autonomous vehicles, all of which rely heavily on



[Soetek's Highly Integrated Telecom Power System Solves Outdoor Base](#)

Soetek's 5G base station power system, with its highly integrated design, injects stable and robust vitality into 5G base stations worldwide, supporting the creation of a truly ubiquitous and always ...

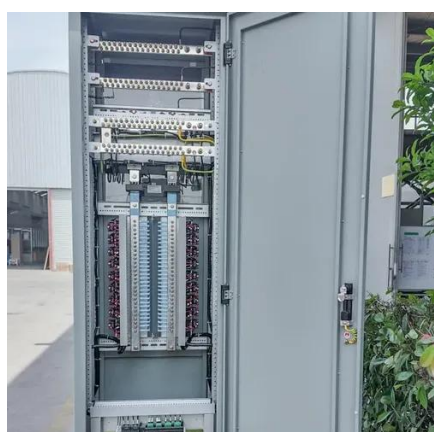
[Base Station Cabinet for Telecom: Reliable Outdoor Solutions for ...](#)

An in-depth look at base station cabinets for telecom networks, focusing on outdoor reliability, 5G deployment needs, and long-term infrastructure resilience.



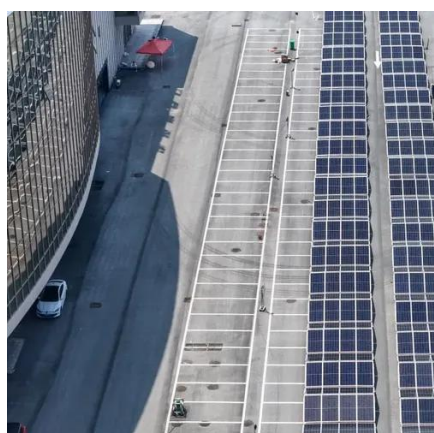
5G Telecom Outdoor Base Station

Taking into consideration the highly challenging environments where new 5G telecom outdoor base stations will be built and the demand for long-term stable operation, Apacer starts from an analysis of the customer's ...



Base station outdoor construction design

To solve the problems of unreasonable deployment and high construction costs caused by the rapid increase of the fifth generation (5 G) base stations, this article proposes a 5 G base



TetraFlex Outdoor Base Station System

The TetraFlex system is scalable and can handle from one site solutions with local coverage to large-scale multisite solutions, using any combination of outdoor and indoor TetraFlex base stations.

[Radio Base Stations Equipments toward Economical Expansion of](#)



For suburban areas with low traffic, the size of the BTS can be reduced and peripheral devices are made into an all-in-one unit for simpler construction of base stations.



[Complete Guide to 5G Base Station Construction , Key Steps, Equipment](#)

Explore how 5G base stations are built--from site planning and cabinet installation to power systems and cooling solutions. Learn the essential components, technologies, and challenges behind 5G ...

[Radio Base Stations Equipments toward Economical Expansion of ...](#)

This article describes the development of the series of radio base stations equipments applicable to various implementation areas, to economically expand the indoor and outdoor areas covered by FOMA services.





Contact Us

For catalog requests, pricing, or partnerships, please visit:

<https://iwap.com.pl>

Phone: +34 919 456 782

Email: info@iwap.com.pl

Scan the QR code to access our WhatsApp.

