



# Operating Guidelines for 30kW Power Storage Cabinets in Schools





## Overview

---

The program provides resources like this Guide to Operating and Maintaining EnergySmart Schools to assist school decision makers in planning, financing, operating, and maintaining energy efficient, high performance schools. It also offers education and training for building industry. r and Buyer (Chint Power and Buyer may be referred to individually as a “Party” or collectively as the “Parties”). These Terms apply in lieu of (a) any course of dealing between the Parties, (b) any usage of trade in the industry, and (c) all quotations, sales orders, purchase orders, or other. The U. It also encourages the building of new schools that exceed code (ASHRAE 90. While BESS technology is designed to bolster grid reliability, lithium battery fires at some. Looking for a versatile outdoor energy storage solution?

Check out our 30 kW/90 kWh cabinet! Perfect for demand regulation, peak shifting, and C& I energy s The outdoor energy storage cabinet, with the standard configuration of 30 kW/90 kWh, is composed of a battery cabinet and an electrical. 30 kW Max. Charging/Discharging Current Max. Charging/Discharging Current AlphaESS is able to provide outdoor battery cabinet solutions that are stable and flexible for the requirements of all our customer's battery and energy storage. Generac's inventive Modular Power System (MPS) for paralleling generators offers educational facilities the power, redundancy, scalability and safety required. The MPS approach does not require dedicated third-party switchgear. Future generators simply tie directly to the generator bus.



## Operating Guidelines for 30kW Power Storage Cabinets in Schools



### Low Voltage Distribution

Abundant configuration o Diversified selection of equipment capacity; Can be integrated with monitoring system; Energy storage system series

### [30kW Outdoor Battery Energy Storage Cabinet](#)

30kW Outdoor Battery Energy Storage Cabinet  
General Properties AC voltage Dimensions  
(W\*D\*H) Enclosure Weight Max. discharge power  
Max. charge power Max. discharge current Max.  
charge ...



### [Guide to Operating and Maintaining EnergySmart Schools](#)

This webpage includes information from first responder and industry guidance as well as background information on battery energy storage systems ...

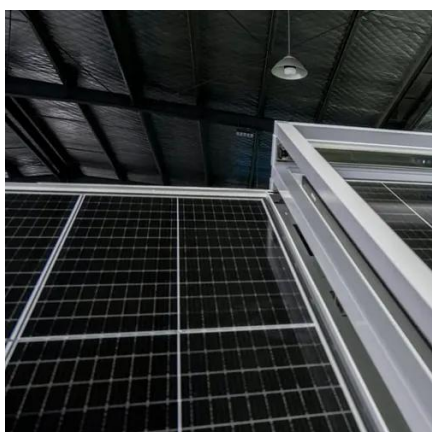
### AlphaESS STORION-T30 Outdoor Battery Cabinet, Battery and Energy Storage

AlphaESS is able to provide outdoor battery cabinet solutions that are stable and flexible for the requirements of all our customer's battery and energy storage demands.



### [Battery Energy Storage Systems: Main Considerations for Safe](#)

This webpage includes information from first responder and industry guidance as well as background information on battery energy storage systems (challenges & fires), BESS installation ...



### [Schools & Universities Rely on Generators for Backup Power](#)

Ensure uninterrupted operations and safety on school campuses. Explore backup power solutions, including generators, and the importance of compliance for educational facilities.



### [30KW/90KWH Commercial & Industrial ESS - Outdoor ...](#)

The outdoor energy storage cabinet, with the standard configuration of 30 kW/90 ...



### [30KW/90KWH Commercial & Industrial ESS - Outdoor Cabinet](#)



The outdoor energy storage cabinet, with the standard configuration of 30 kW/90 kWh, is composed of a battery cabinet and an electrical cabinet. It can apply to demand regulation peak shifting C& I energy ...



### [Educational Facility Backup Generators , Generac Industrial Energy](#)

With so much at stake, many educational facilities are relying on high kW generators to provide the standby/emergency power needed. These generators can ensure the heating, cooling, ventilation, ...

### [INSTALLATION, OPERATION, AND MAINTENANCE MANUAL ...](#)

In the event of Default, Chint Power shall have the right to exercise any one or more of the following remedies with or without legal process or notice to Buyer or any guarantor and without liability to ...



### [Guide to Operating and Maintaining EnergySmart Schools](#)

The program provides resources like this Guide to Operating and Maintaining EnergySmart Schools to assist school decision makers in planning, financing, operating, and maintaining energy efficient, high ...



## Contact Us

---

For catalog requests, pricing, or partnerships, please visit:

<https://iwap.com.pl>

Phone: +34 919 456 782

Email: [info@iwap.com.pl](mailto:info@iwap.com.pl)

Scan the QR code to access our WhatsApp.

