



On-site repair of solar inverter GFDI fault





On-site repair of solar inverter GFDI fault



Troubleshooting Ground Faults for Solar

Troubleshooting ground faults is simple. Just remember to use proper safety procedures and equipment when performing these tasks. This includes locking out any disconnects and ...

GROUND-FAULT PHOTOVOLTAIC ANALYSIS AND

In our analysis, it is considered that the PV array is the only source of fault current. In other words, there is no overcurrent or overvoltage from any utility inverter, battery, lightning strikes ...



[Solar Ground-Fault: How to Identify, Locate, and Repair](#)

Solar Ground-Fault: How to Identify, Locate, and Repair Getting a state 475 on your Fronius inverter, or a low isolation resistance warning on another brand? This is a common occurrence in residential solar ...

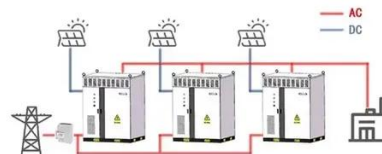


[How to find and repair ground faults in solar PV systems](#)

How are solar inverters protected from a ground fault? Solar inverters must have a ground fault detection and interruption (GFDI) device to detect and stop ground faults.



WORKING PRINCIPLE



PV Ground-Fault Detector Interrupter (GFDI)

Introduction The OutBack Power Systems' Ground Fault Detector Interrupter (GFDI) is a safety device for a photovoltaic (PV) array. In the event that the array becomes shorted to ground, it ...

How to find and repair ground faults in solar PV systems

Intermittent ground faults may also result from moving parts, such as tracking solar arrays. The fault may only appear at specific times of the day. In that case, reset the inverter and use the monitoring ...



LIQUID COOLING ENERGY STORAGE SYSTEM

EMS real-time monitoring
No container design
flexible site layout



Cycle Life
≥ 8000

Nominal Energy
200kwh

IP Grade
IP55

SUNNY CENTRAL

In case of the Sunny Central with the "GFDI negative ground" or "GFDI positive ground" insulation monitoring option, the grounding takes place within the device. The inverters are adapted ...

Solar PV Ground-fault Troubleshooting: Theory, Tools, and Field ...



Identify common PV inverter topologies along with associated protective devices and grounding configurations. Recognize ground-fault current paths and the GFDI functionality for different PV ...

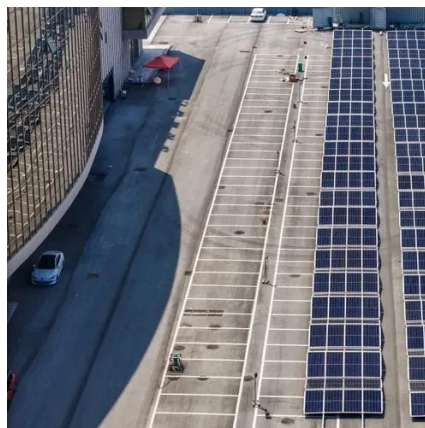


[Electrical testing standards guide for the PV Industry](#)

PV inverters have integrated ground-fault detector interrupters (GFDIs) to isolate affected circuits and to alert technicians when a fault current occurs. The GFDI is a crucial safety feature in ...

[Choose the Right Diagnostic Method for Your ...](#)

Learn the types of ground faults, different test methods, and how to choose the right one at the right time.





Contact Us

For catalog requests, pricing, or partnerships, please visit:

<https://iwap.com.pl>

Phone: +34 919 456 782

Email: info@iwap.com.pl

Scan the QR code to access our WhatsApp.

