



Nippon paint brands



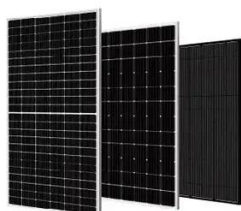


Overview

The company was founded in 1881 by Jujiro Motegi under the name Komyosha (Yamato Jujiro Shoten). In 1898, the company was incorporated and renamed Nippon Paint Manufacturing and in 1927 the company's name was changed to Nippon Paint. In 1954, Nippon Paint established a 50/50 joint venture with Bee Chemical. In 2006, it became a wholly owned subsidiary of Nippon Paint.



Nippon paint brands



[Nippon Paint Holdings Co., Ltd. - Complete Company Profile](#)

Nippon Paint has built a portfolio of 53 key global brands across paints, coatings, adhesives, sealants, and construction chemicals. These brands are highly trusted in their respective ...

List of Brands

This is the About Us page of Nippon Paint Holdings. This page presents a list of brands.



Home paint products

The best building paint products from Nippon Paint is ideal for both interior and exterior surfaces. It gives your home a beautiful colour and a long-lasting coat. High-quality products for steel and wood ...

About us

Over the years, Nippon Paint offers homeowners and partners high-quality coating solutions. We listen to our customers and empower our employees to understand the markets, industries and consumers ...



Nippon Paint Industrial International

Established in 1881 in Tokyo by Moteki Jujiro, NipponPaint became the first paint factory in Japan, and today, it is the biggest coating manufacturer in Asia.



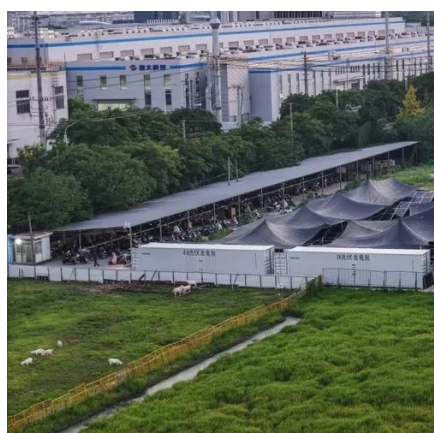
Nippon Paint English Site

Products Nippon Paint develops, manufactures and sells paints for architecture (houses, buildings and condominiums, etc.), large structures (bridges, plants and tanks, etc.) and coatings for automotive ...



Nippon Paint

Nippon Paint is a Japan-based company that has been in India since 2006. They have also been one of the sponsors of Chennai Super Kings and Royal Challengers Bangalore in Indian Premier League.



NIPSEA Group , Nippon Paint



Headquartered in Singapore, with more than 148 NIPSEA companies spread throughout 28 geographical locations, the group is Asia Pacific's No. 1 paint and coatings manufacturer in both ...



Nippon Paint

The company was founded in 1881 by Jujiro Motegi under the name Komyosha (Yamato Jujiro Shoten). In 1898, the company was incorporated and renamed Nippon Paint Manufacturing and in 1927 the company's name was changed to Nippon Paint. In 1954, Nippon Paint established a 50/50 joint venture with Bee Chemical. In 2006, it became a wholly owned subsidiary of Nippon Paint.

Support Customized Product



NIPPON PAINT HOLDINGS CO.,LTD.

Nippon Paint Holdings Receives High Recognition from Major Japanese IR/Sustainability Website Evaluation Organizations, including the Grand Prize in the 2025 Daiwa Internet IR Award for the fifth ...



[?NipponOfficial Website - Delivers premium paints and coatings for](#)

Discover paint collections inspired by the timeless beauty of Japanese design - where every shade tells a story of tradition, innovation, and the perfect harmony between nature and craftsmanship.



Contact Us

For catalog requests, pricing, or partnerships, please visit:

<https://iwap.com.pl>

Phone: +34 919 456 782

Email: info@iwap.com.pl

Scan the QR code to access our WhatsApp.

