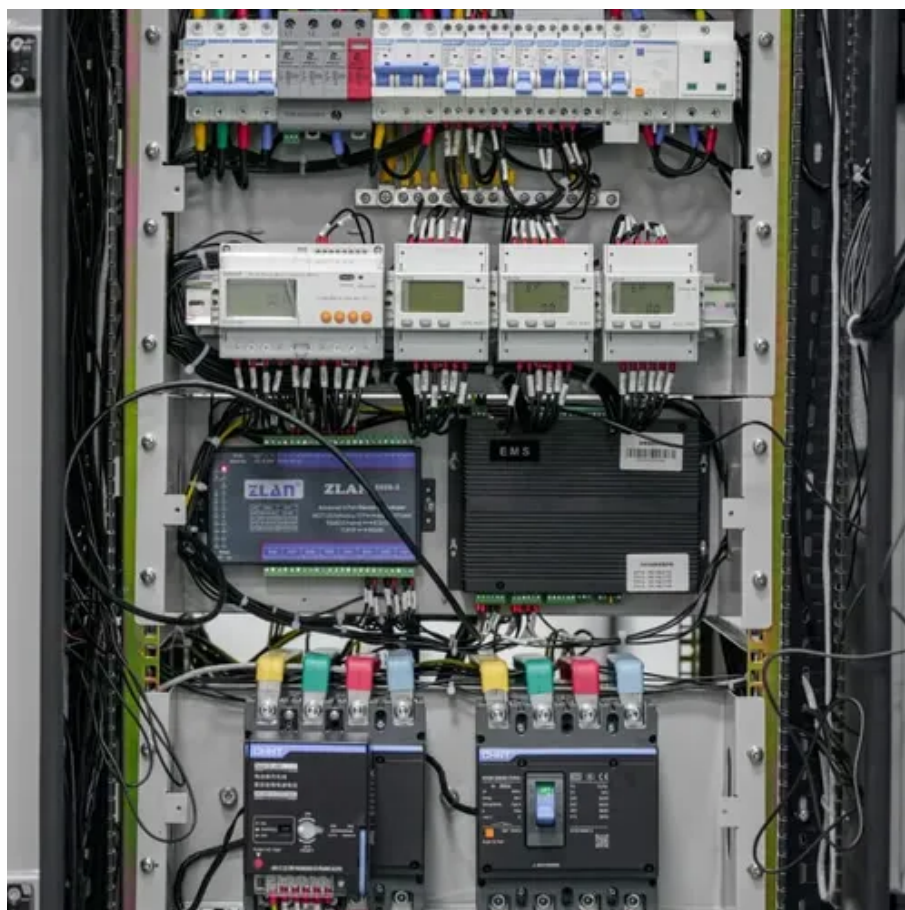




New energy battery cabinet does not display voltage





Overview

Check volt reading on volt meter. Recharge battery with separate charger. If you encounter any installation or operational issues with your product, check the pertinent section of this manual to see if the issue can be resolved by following outlined procedures. www.sigenergy.com/en-us/support/ for additional assistance. Read and follow these instructions! The. In case the temperature sensor is used: The temperature sensor M8 cable lug must be connected to the positive pole of the battery bank (the red wire of the sensor doubles as the power supply wire). Make sure the correct temperature sensor is used. Note. Trying to figure out why my display panel isn't registering the chassis battery voltage. All chassis and house batteries are new. Join the #1 RV Forum Today - It's Totally Free! iRV2. We'll also explore how companies like Sigenergy are making these issues easier to detect and solve with. Installation or service questions?

Call SENS between 8 a.



New energy battery cabinet does not display voltage



[Sens EnerGenius DC Cabinet Installation & Operation Manual](#)

Module Redundancy The EnerGenius DC Cabinet can be factory ordered with N+1 or N+2 module redundancy. This provides more power modules than are required to meet the rated output. All ...



[Battery Troubleshooting Tips for our Lithium and SLA Batteries](#)

Learn common battery troubleshooting tips for Newcastle System's Lithium Batteries and SLA power source. Or contact one of our technicians today. We are here to help.

[Troubleshooting Common Home Battery Inverter Issues](#)

Home battery inverter problems can be frustrating, but with a little knowledge--and the right technology--you can resolve many issues with minimal effort. Understanding common failure ...



6. Troubleshooting & support

During normal operation of a lithium battery, small differences between cell voltages occur all the time. These are caused by slight differences between the internal resistance and self-discharge rates of ...



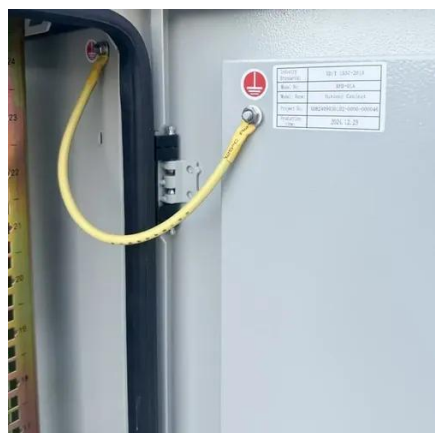
New energy battery cabinet cannot be charged

Problems related to battery charging and discharging of SHxxRS and SHxxRT and the guidance of troubleshooting Battery charging and discharging problems can occur in residential energy storage ...



Panel not showing chassis battery voltage

Trying to figure out why my display panel isn't registering the chassis battery voltage. Nothing is displayed. All chassis and house batteries are new. I have a photo of it but can't seem



CABINET

This alarm is intended only for longer discharge rates (i.e. not engine starting applications) and indicates the normal end-of-discharge voltage for a lead-acid battery.

10. Troubleshooting



If the battery monitor does not detect that the battery has been fully charged you will need to check or adjust the charged voltage, tail current and/or charged time settings.



[RV Energy Storage Battery Not Displaying Power: Troubleshooting ...](#)

Why Isn't My RV Battery Showing Power? Common Causes & Fixes If your RV energy storage battery isn't displaying power, you're not alone. This issue affects many RV owners and solar enthusiasts. ...

SL-71251_EnergyCore Lithium 5_REVC_Web

2.1 Model Nomenclature The 15-digit part number is on the main label inside the door of EnergyCore Lithium 5. The part number defines the configuration of the battery cabinet. Various battery modules ...



1075KWHH ESS



Contact Us

For catalog requests, pricing, or partnerships, please visit:

<https://iwap.com.pl>

Phone: +34 919 456 782

Email: info@iwap.com.pl

Scan the QR code to access our WhatsApp.

