

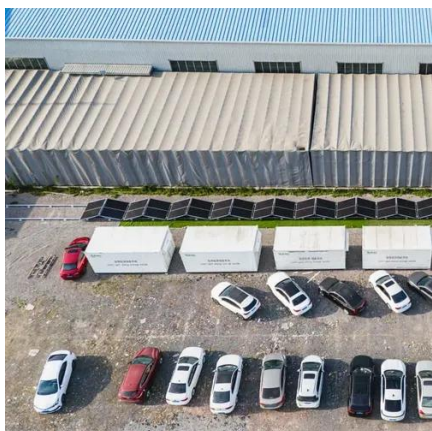


Longi photovoltaic panel 305w





Longi photovoltaic panel 305w



305W Longi Solar Panel (Mono)

Electrical Characteristics STC Power Rating 305W
Peak Efficiency 18.7 % Power Tolerances 0/+5W
Number of Cells 60 Imp 9.24 A Vmp 33V Isc 9.94A
Voc 40.2 V Temp. Coefficient of Isc 0.057%/C ...

[Longi Solar LR6-60HPB-305M 305w Mono Solar Panel](#)

These modules feature black 35mm frames with white back sheets and industry-standard -0/+5W sorting. LONGi backs these modules with a 10-year product warranty and 25-year linear warranty. ...



[Longi Solar LR6-60HPB-305M 305w Mono Solar Panel](#)

These modules feature black 35mm frames with white back sheets and industry-standard -0/+5W sorting. LONGi backs these modules with a 10-year product warranty and 25-year linear ...

305W Longi Solar Panel (Mono)

Electrical Characteristics STC Power Rating 305W
Peak Efficiency 18.7 % ...



[LONGi LR6-60HPB-305W Solar Panel Specifications](#)

Learn about the LONGi LR6-60HPB-305W solar panel. Explore solar panel efficiency, warranties and more.

[Longi Solar 305w Mono Solar Panel : Specifications](#)

Specifications Manuals Brands Longi Solar Manuals Solar & Wind Power 305w Mono Solar Panel



[Longi Half-cut Perc Cell Technology Solar Panel 305W](#)

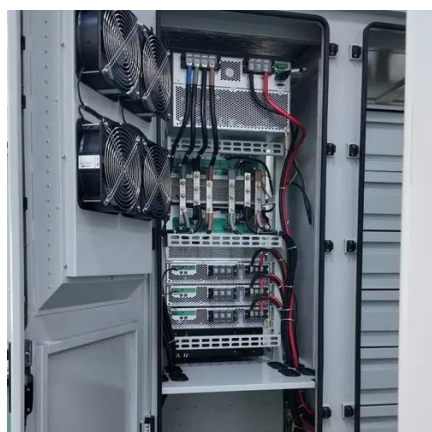
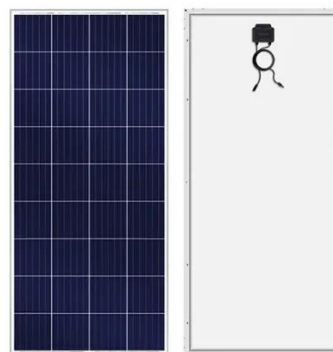
As one of the leading longi half-cut perc cell technology solar panel 305w manufacturers and suppliers in China, we warmly welcome you to wholesale longi half-cut perc cell technology solar panel 305w for ...



[Enphase Intergrated AC Module All Black > Longi 305 Watt](#)



Longi AC Modules combines the efficiency of low LID Mono PERC Technology solar panels with smart-grid ready Enphase IQ7 Microinverters, which deliver high power output for residential and rooftop ...



[LONGi 305W Solar Panel 120 cell
LNG-305-LR6-HPB](#)

305W LONGi Solar Panel is a highly efficient, low LID Mono PERC 120 cell module that represents the latest half-cut technology. It features black 40 mm frame, black backsheet, 1200mm cables, MC4 ...

LONGi Solar LR6-60PB-305M

All you need to know about the LR6-60PB-305M solar panel including rating, cost, efficiency, and warranty terms.

Lithium battery parameters

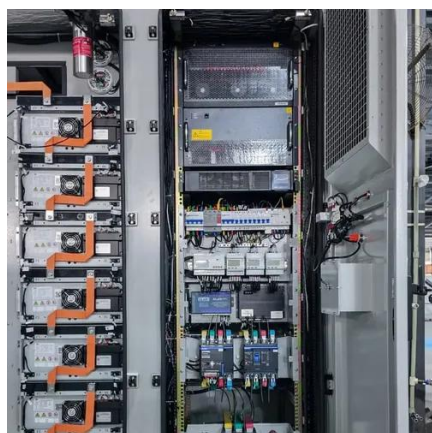
Product capacity: 100Ah

Product size: 135*197*35mm

Product weight: 1.82kg

Product voltage: 3.2V

internal resistance: within 0.5



[High-efficiency Module, Longi solar module](#)

LONGi launched its mono-PERC modules in 2016, featuring integrated PERC technology on monocrystalline silicon and low light degradation, and its cell efficiency has increased from 21% to ...

Longi 305 Black Mono PERC Solar Panel



LONGi Solar's high efficiency mono PERC technology combined with the aesthetic appearance of a black frame and backsheet make this panel especially suited for rooftop installation.





Contact Us

For catalog requests, pricing, or partnerships, please visit:

<https://iwap.com.pl>

Phone: +34 919 456 782

Email: info@iwap.com.pl

Scan the QR code to access our WhatsApp.

