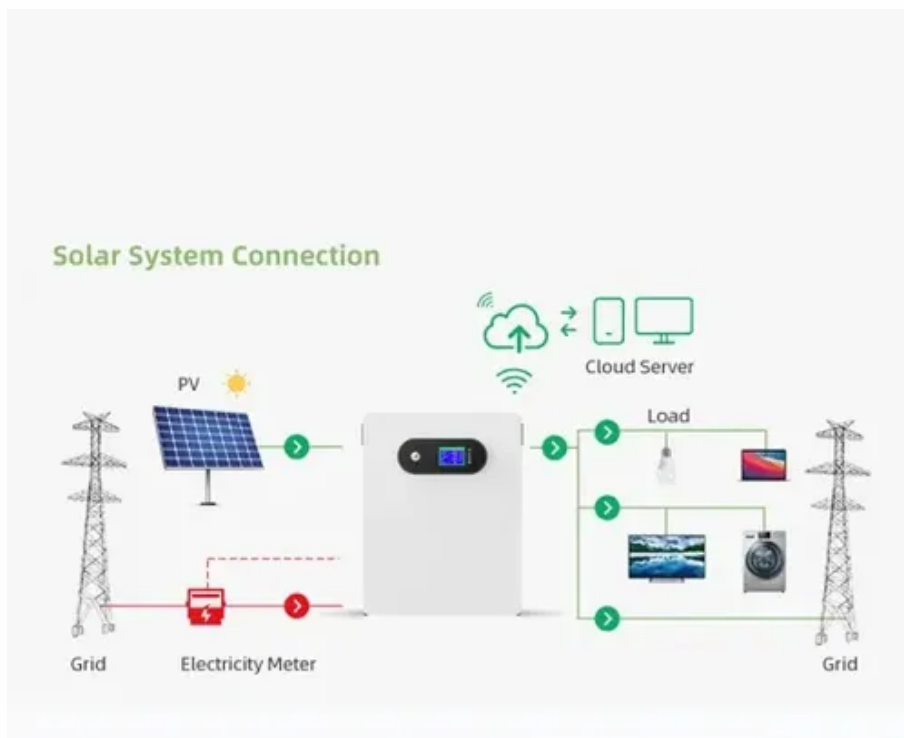




# Lithium battery pack 36v charging voltage 42





## Overview

---

Yes— 42V is the correct full-charge voltage for most 10S 36 volt lithium-ion battery pack. What matters is that the charger matches the pack's chemistry, charging profile, and current limit. Each cell has a nominal voltage of around 3. Using a charger matched to these voltage settings, like those recommended by DEESPAEK, guarantees. A fully charged 36V lithium battery, particularly those using LiFePO4 chemistry, typically reaches a voltage of around 43. For lithium-ion batteries, especially those configured in a 10-cell series (10S) arrangement, the fully charged voltage can reach up to 42 volts (4).



## Lithium battery pack 36v charging voltage 42

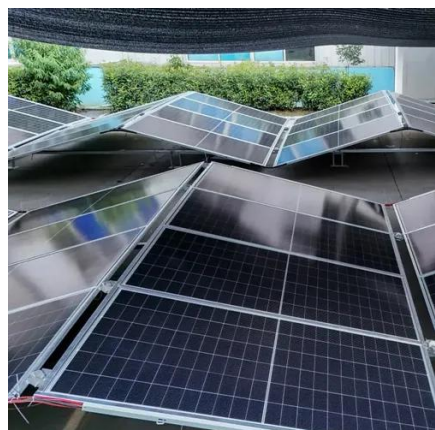


### [What Should a 36V Battery Charge at? \(In-depth Analysis\)](#)

Most 36V batteries require a charging voltage of between 42 and 58 volts. However, some batteries may require a higher CCA or lower voltage, so it's always best to check your owner's ...

### [How to Understand the Voltage of a Fully Charged 36V Lithium Battery](#)

A 36V lithium battery achieves full charge when the voltage reaches approximately 42V. This occurs through a two-stage process: the first stage rapidly charges the battery, and the second ...



### [Understanding the Voltage Threshold of a 36V Lithium-Ion Battery](#)

A 36V lithium-ion battery typically has a nominal voltage of 36 volts, with a fully charged voltage ranging from about 42 to 43.8 volts and a recommended safe minimum discharge voltage ...

### [Can I Charge a 36V Battery with a 42V Charger?](#)

Can I Charge a 36V Battery with a 42V Charger? Yes, you can charge a 36V battery with a 42V charger. The nominal voltage of a 36V lithium battery is typically based on a configuration of ...



### [Optimal Charging Voltage for a 36V Battery: Maximizing Performance ...](#)

The optimal charging voltage for a 36V LiFePO4 battery is generally around 42 to 43.8 volts. Charging within this range ensures full capacity while protecting battery health and maximizing ...

### [What is the Fully Charged Voltage of a 36V Battery?](#)

What is the Fully Charged Voltage of a 36V Battery? Home / Knowledge / What is the Fully Charged Voltage of a 36V Battery? The fully charged voltage of a 36V battery typically ranges ...



### [36V 37V 42V 9.6Ah 30A 9600mAh Lithium Li-ion Battery Pack](#)

Perfect for building 36V battery pack for eBike, external battery and other small electronic devices. Charged by Li-ion 42V Charging Voltage Battery Charger. Technical Specs. Capacity: 9600mAh (full ...



### [36V Lithium Battery Guide: What You Need to Know](#)



Yes-- 42V is the correct full-charge voltage for most 10S 36 volt lithium-ion battery pack. What matters is that the charger matches the pack's chemistry, charging profile, and current limit.



### [How To Choose A 36 Volt Li Ion Battery Charger?](#)

What voltage specs are critical for 36V chargers? A 36V Li-ion charger must deliver 42V maximum (full charge) with  $\pm 0.5V$  precision. Under-voltage (below 40V) leaves cells partially ...

### [YZPOWER 42V 2A Lithium Battery Charger for 36v 10s Li-ion Battery ...](#)

Widely Applicable : 36V lithium-ion battery pack. You can contact YZPOWER charger after-sales customer service 7\*24 hours if you have any problems during the use. Please review the ...





## Contact Us

---

For catalog requests, pricing, or partnerships, please visit:

<https://iwap.com.pl>

Phone: +34 919 456 782

Email: [info@iwap.com.pl](mailto:info@iwap.com.pl)

Scan the QR code to access our WhatsApp.

