



# Large solar tower power station





## Overview

---

A solar tower plant is a highly efficient and advanced solar power system that uses heliostats to concentrate sunlight onto a central receiver. Solar power plants are facilities designed to tap solar energy and convert it to electricity using the photovoltaic effect of solar panels. This energy needs to be. On January 20, Dongfang Electric Corporation (DEC) began the shipment, from its manufacturing plant in Deyang City, Sichuan province, of the 100-megawatt tower-type turbine unit for the solar thermal power station in Anduo County, Xizang Autonomous Region. 6 billion in total to finance Ivanpah, a 392-MW concentrating solar power (CSP) plant. It started commercial operations in January 2014 and Secretary Moniz participated in the dedication ceremony in February 2014.



## Large solar tower power station



### Solar power tower

A solar power tower, also known as 'central tower' power plant or ' heliostat ' power plant, is a type of solar furnace using a tower to receive focused sunlight. It uses an array of flat, movable mirrors ...

### [Largest solar thermal power stations \(CSP\) list](#)

Only the systems with power capacity not less than 50MW are listed. The catalogue includes the projects with and without energy storage, on which a corresponding note is made.



### [DEC Delivers Turbine Unit for World's Highest-Altitude Solar Thermal](#)

On January 20, Dongfang Electric Corporation (DEC) began the shipment, from its manufacturing plant in Deyang City, Sichuan province, of the 100-megawatt tower-type turbine unit ...



### IVANPAH

Ivanpah uses power tower solar thermal technology to generate power by creating high-temperature steam to drive a conventional steam turbine. Mirrors are used to concentrate sunlight and create ...



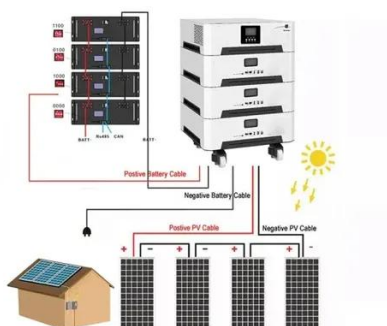
### [The 20 Largest Solar Power Plants in the World](#)

Located 31 miles from the city of Dubai, Mohammed bin Rashid Al Maktoum Solar Park is the seventh-largest solar power station in the world. It has a total area of 30 square miles in the ...



### [Top 10 Largest Solar Power Plants in the World](#)

Spread across 14,000 acres in the Thar desert of the Rajasthan district, the Bhadla Solar Park is the largest solar power plant in the world. With a massive generating capacity of 2.25 GW, it ...



### **What is a solar tower plant?**

Solar tower plants are capable of achieving very high temperatures and are used for large-scale power generation. They are highly efficient and can also store thermal energy for ...

### [The 20 Largest Solar Power Plants in the World](#)





## Contact Us

---

For catalog requests, pricing, or partnerships, please visit:

<https://iwap.com.pl>

Phone: +34 919 456 782

Email: [info@iwap.com.pl](mailto:info@iwap.com.pl)

Scan the QR code to access our WhatsApp.

