



Junction box electrical





Junction box electrical

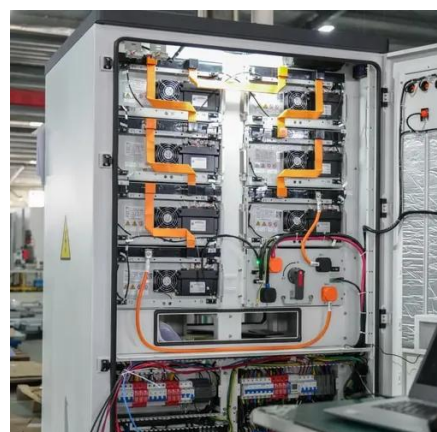


Types of Electrical Boxes

Learn about the different types of electrical boxes, also known as junction boxes, and how to choose the right one for your project. Find out about their materials, shapes, sizes and installation ...

[What is a Junction Box? A Complete Beginner's Guide](#)

A junction box is an enclosure that houses and protects electrical wire connections. It provides a secure chamber where multiple wires can be spliced, joined, or split into different circuits ...



What Is a Junction Box? , Angi

A junction box is a protective enclosure where electrical wires connect, splice, and safely distribute power. Homeowners should match junction box size and material to wiring and location for ...

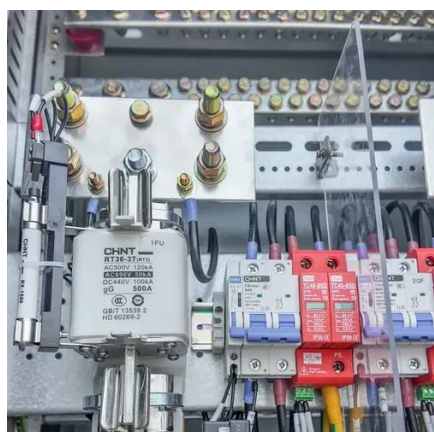
[What Is a Junction Box Used For and Why It Matters](#)

A junction box is an enclosure that safely houses electrical connections -- where two or more wires meet, split, or continue. Its job is to contain electrical splices, protect conductors from ...



Junction Boxes at Lowes

An electricity junction box does more than guard against damage to the wiring itself. It also helps to protect residents of a home or inhabitants of a building against injury, as damaged and exposed ...



[What is a Junction Box \(or jbox\)? , Electrical Knowledge](#)

A junction box - also known as an ' electrical box ', ' jbox ', 'or ' terminal box ' - is a protective box where wires are interconnected. Junction boxes are often built into the plaster of a ...



Junction box

An electrical junction box (also known as a " jbox ") is an enclosure housing electrical connections. [1] Junction boxes protect the electrical connections from the weather, also playing a crucial role in ...



[What Is an Electrical Junction Box and Why Do You Need One?](#)



The electrical junction box, often called a J-box, serves as a fundamental, though often hidden, component in modern wiring systems. Its purpose extends far beyond simply housing wires; it is a ...



Types of Electrical Boxes

Electrical boxes, also known as junction boxes, enclose wire connections. They help protect against short circuits, which can cause fires. This guide describes the different types of ...

What Is a Junction Box?

Junction boxes are crucial elements in the electrical wiring systems of homes and commercial buildings, designed to house and protect electrical connections. These boxes, made of ...



Amazon : Junction Boxes

Discover flame-retardant, weatherproof junction boxes to safely encase electrical splices. Explore a range of sizes and materials for reliable wiring solutions.



Contact Us

For catalog requests, pricing, or partnerships, please visit:

<https://iwap.com.pl>

Phone: +34 919 456 782

Email: info@iwap.com.pl

Scan the QR code to access our WhatsApp.

