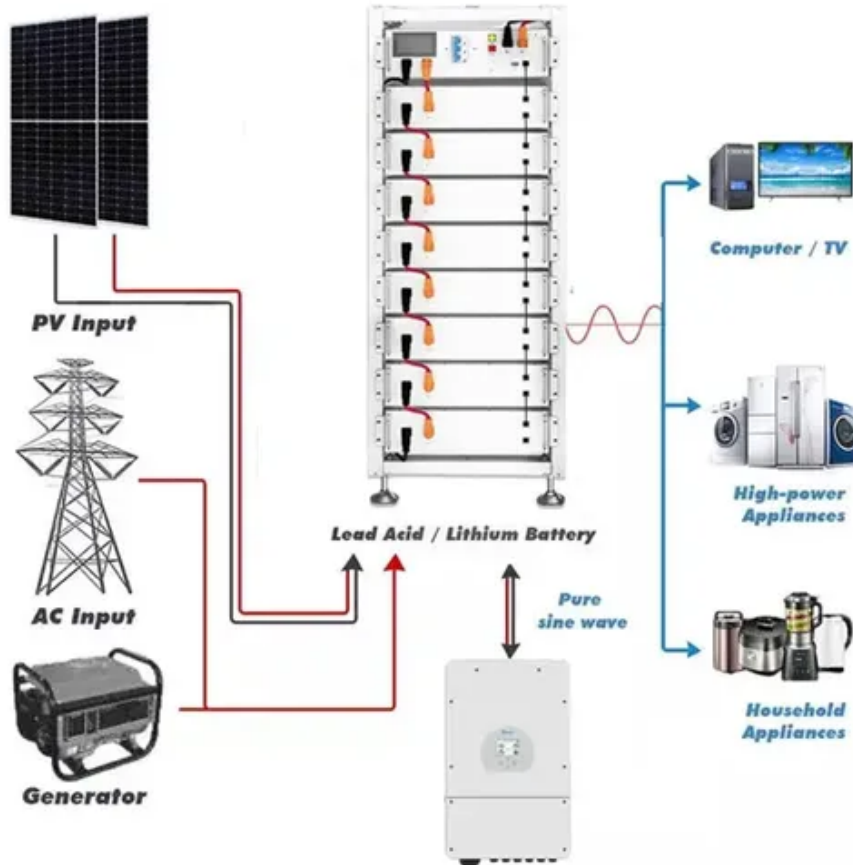




# Jakarta electric vehicle infrastructure





## Overview

---

As of March 2025, PLN has established 3,772 Public EV Charging Stations (SPKLU) for four-wheelers, 9,956 for two-wheelers (SPLU), 2,240 battery swap stations (SPBKLU), marking substantial progress in building a robust charging ecosystem across big cities as well as smaller. As of March 2025, PLN has established 3,772 Public EV Charging Stations (SPKLU) for four-wheelers, 9,956 for two-wheelers (SPLU), 2,240 battery swap stations (SPBKLU), marking substantial progress in building a robust charging ecosystem across big cities as well as smaller. In a significant step toward advancing Indonesia's sustainable mobility agenda, Perusahaan Listrik Negara (PLN) has inaugurated Jakarta's first large-scale electric vehicle (EV) charging centers. This initiative aims to bolster the nation's green energy infrastructure and support the government's. Vehicle emissions substantially contribute to that pollution and to climate change. 1 The ICCT's analysis of passenger cars in the country showed that battery electric vehicles (BEVs), which have no tailpipe emissions and are more efficient than internal combustion engine (ICE) vehicles, could. TEMPO. CO, Jakarta - PT PLN (Persero) recorded a surge in the development of electric vehicle infrastructure throughout 2024. In its efforts to accelerate the electric vehicle ecosystem in Indonesia, the number of Public Electric Vehicle Charging Stations (SPKLU) increased by 299 percent, from 1,081. state-owned electricity provider PT PLN is accelerating its efforts to expand Indonesia's electric vehicle (EV) charging infrastructure, reinforcing its pivotal role in building a sustainable and accessible EV ecosystem across the archipelago. Charging stations, known locally as Stasiun Pengisian Kendaraan Listrik Umum (SPKLU), are popping up across the archipelago at an unprecedented rate.



## Jakarta electric vehicle infrastructure



### Jakarta

Jakarta is the capital and largest city of Indonesia, located on the northwest of the island of Java. Jakarta is the country's economic, cultural and political centre and the most populous city ...

### [PLN's EV Charging Stations Increased by 299 Percent in 2024](#)

In its efforts to accelerate the electric vehicle ecosystem in Indonesia, the number of Public Electric Vehicle Charging Stations (SPKLU) increased by 299 percent, from 1,081 units in ...



### Jakarta

Jakarta is the economic, cultural, and political centre of Indonesia, and the ASEAN's second largest economy after Singapore. It ranks first among the Indonesian provinces in the human development ...



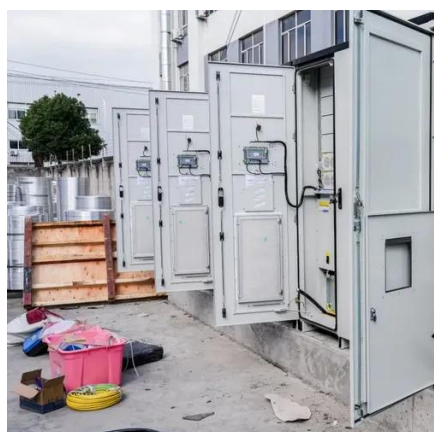
### [Jakarta, Indonesia, History, Map, Population, & Facts, Britannica](#)

Jakarta, largest city and capital of Indonesia. It lies on the northwest coast of Java at the mouth of the Ciliwung (Liwung River), on Jakarta Bay, and is a major trade and financial center. ...



### [PLN inaugurates Jakarta's first large-scale EV charging centres](#)

Indonesia's state utility Perusahaan Listrik Negara (PLN) has opened Jakarta's first large-scale electric vehicle (EV) charging centres, a milestone in the country's effort to promote ...



### [PLN leads the charge in expanding EV charging ...](#)

This dramatic growth underscores rising public confidence in EV infrastructure and highlights the increasing shift toward sustainable transportation.



### [The Boom of EV Charging Infrastructure in Indonesia: Private Sector's](#)

This blog post explores how supportive policies and active private participation are powering Indonesia's EV charging infrastructure explosion, and what it means for current and future ...

#### ESS



## Jakarta, Indonesia



Jakarta is the political, economic, and cultural centre of Indonesia. The city is all about sprawling nature, historic sights, ultra-modern malls, and bustling nightlife.



CE UN38.3 MSDS

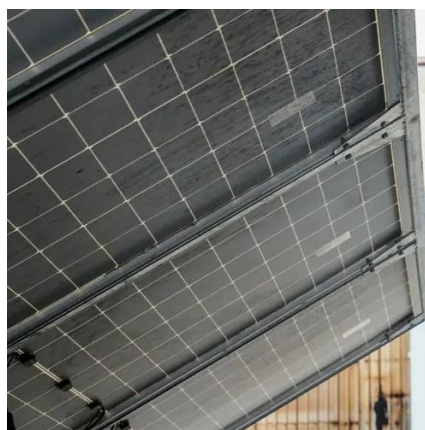


### [Jakarta, Indonesia: All You Must Know Before You Go \(2026\)](#)

Chaotic, crowded, and cosmopolitan, Jakarta, the capital of Indonesia, is a city of contrasts. Home to millions of people from around the world, the city is a mixture of languages and cultures, poverty and ...

### [25+ Best Things to Do in Jakarta , The Ultimate 2025 Travel Guide](#)

Planning a trip to Jakarta? Our definitive 2025 guide covers 25+ best things to do, from exploring historic Kota Tua to tasting authentic street food. Plan your trip now!



### [The Only Jakarta Travel Guide You'll Ever Need \[2026\] , Backindo](#)

Discover the best things to do in Jakarta with this complete guide! Explore top attractions, local food, transport tips, and essential travel advice.



### [Jakarta Indonesia Tourism \(2026\) Travel Guide Top Places , Holidify](#)



Indonesia's capital city, Jakarta is also the nation's cultural, economic and political centre. Amble leisurely through Kota Baru, or Jakarta's Old Town, where colonial Dutch architecture remains ...



[\(PDF\) Bridging the Gap: The Need for More Public Electric Vehicle](#)

Rapid placement of electric vehicle charging stations (EVCSs) is essential for the transportation industry in response to the growing electric vehicle (EV) fleet.

[PLN's Innovation : Transforming Electric Poles Into EV Charging](#)

Jakarta - In a pioneering initiative to boost electric vehicle (EV) adoption, Indonesia's state-owned utility company, PLN, is transforming its electric poles into public EV charging stations.



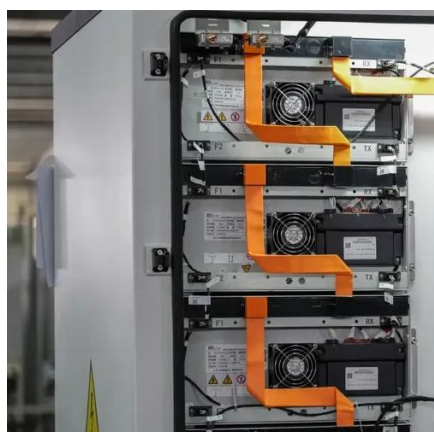
[Envisioning the Future of Sustainable Transportation in Jakarta: A](#)

Adoption of electric vehicles (EV) in Jakarta reveals a complex interplay of psychological, infrastructure, and sociodemographic factors, reflecting both global patterns and context-specific ...

**Jakarta - Travel guide at Wikivoyage**



Jakarta is Indonesia 's capital and largest city, with about 10 million inhabitants, and a total 41.9 million in Greater Jakarta on the Java island, making it the largest city in Southeast Asia.

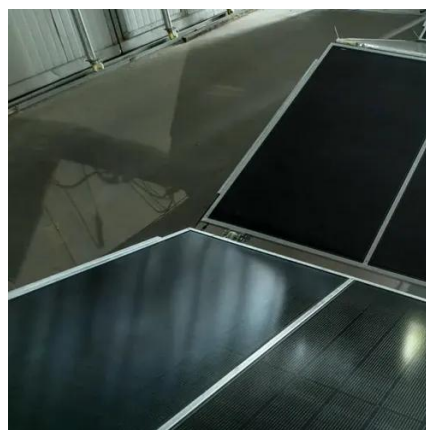


### [Charging Indonesia's vehicle transition: Infrastructure needs for](#)

Presidential Regulation (PR) No. 55/2019 provides a legal framework for electrifying the road transport sector in Indonesia.

### [PLN Inaugurates Jakarta's First Large-Scale EV Charging Centers to](#)

Each center features large-scale charging facilities with more than ten connectors and integrated management systems designed to enhance convenience for electric vehicle (EV) users.



### **A first-time guide to Jakarta**

Most people visit Jakarta as part of a longer trip to Indonesia, spending just a few days exploring the capital's historic center and checking out the excellent restaurant and cafe scene.



## Contact Us

---

For catalog requests, pricing, or partnerships, please visit:

<https://iwap.com.pl>

Phone: +34 919 456 782

Email: [info@iwap.com.pl](mailto:info@iwap.com.pl)

Scan the QR code to access our WhatsApp.

