



# Is there a big difference in wind power generation from month to month





## Overview

---

Wind energy production experiences seasonal peaks and troughs due to shifting wind speeds. Here's why: Note: Data include facilities with a net summer capacity of 1 MW and above only. Nationally, wind plant performance tends to be highest during the spring and lowest during the mid- to late. These variations stem from changes in weather patterns, temperature differences, and wind speeds that fluctuate throughout the year. Over the years, additional WPPs in other areas were added to and removed from. Forecasting power droughts and floods could aid in the path to a zero-emission future Researchers at Columbia University The team examined decades of data to measure variability trends over time and the impact on power grids. fell to a 33-month low on Monday, forcing power generators to crank up natural-gas fired plants.



## Is there a big difference in wind power generation from month to month

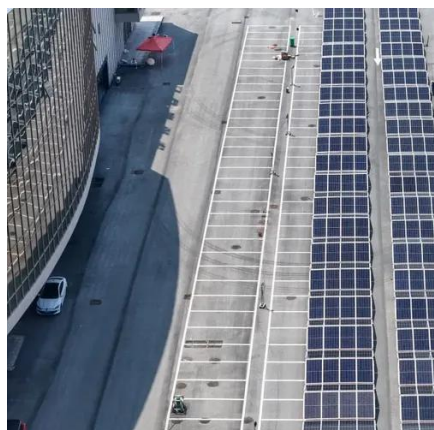


### [US wind power falls to 33-month low, generators burn more natgas](#)

July 24 (Reuters) - The amount of electricity produced by wind farms in the U.S. fell to a 33-month low on Monday, forcing power generators to crank up natural-gas fired plants to keep air conditioners ...

### Wind Energy Factsheet

Wind supplies 57% of Denmark's electricity generation and over 20% in ten other countries. 7 Global wind additions reached a record 117 GW in 2023. 7 In 2024, onshore installations surpassed 100 GW ...



### [Wind Energy And Seasonal Changes - WeatherSend](#)

Understanding wind patterns and their seasonal variations is crucial for optimizing wind energy production. Wind speeds typically increase in winter due to the temperature disparities between the ...

### [How 4 Seasonal Trends Change and Impact Wind Energy Production](#)

Wind energy production is an integral part of the renewable energy landscape, but its efficiency is influenced by seasonal trends. These variations stem from changes in weather patterns, ...



### The annual cycle and intra-annual variability of the global wind power

Depending on the location, results from previous studies show that the availability of wind energy can strongly vary over a year. However, although global temporal wind speed fluctuations are ...

### Long-Term Wind Power Variability

For this report, short-term wind power variations mean fluctuations of average wind power from one hour to the next. Longer-term variations of wind power mean changes in daily, seasonally, and yearly ...



### [Model predicts seasonal variability of solar and wind power](#)

The team studied solar and wind availability at airports to assess how much variation could occur with a completely renewable energy grid. The findings show that the seasonal potential ...



### [13 Compelling Wind Energy Statistics & Facts](#)



Wind power is one of the cleanest and most sustainable sources of energy available to us right now. It is an infinite resource that will never run out, and which produces zero emissions ...



### [Key US wind power trends and metrics to track . Reuters](#)

Wind farms have generated a record share of U.S. electricity production so far in 2024, and are the second largest source of clean power behind nuclear plants in the U.S. generation system.

### [Wind generation seasonal patterns vary across the United States](#)

Because seasonal wind patterns vary by location, seasonal capacity factor patterns also vary across regions. Capacity factors for most regions of the country rise or are flat January through ...





## Contact Us

---

For catalog requests, pricing, or partnerships, please visit:

<https://iwap.com.pl>

Phone: +34 919 456 782

Email: [info@iwap.com.pl](mailto:info@iwap.com.pl)

Scan the QR code to access our WhatsApp.

