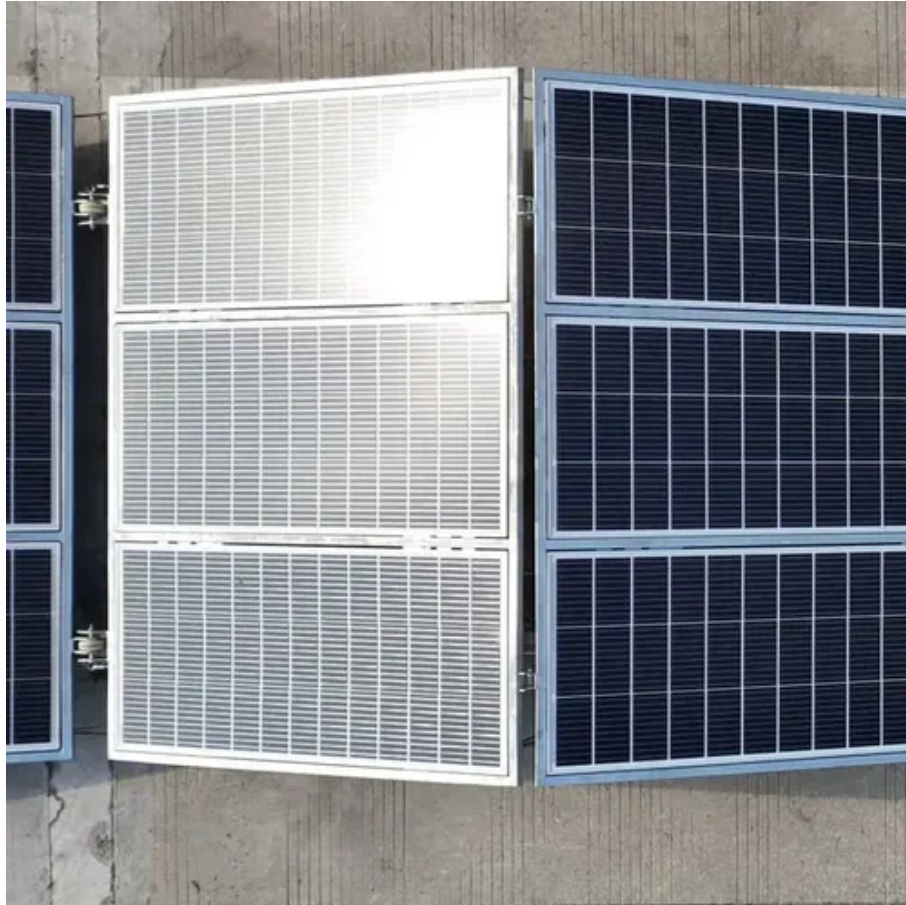




Is the power supply for the communication base station built in a small underground





Is the power supply for the communication base station built in a smart way?



ICNIRP , Base Stations

Over large distances, the signals must be relayed by a communication network comprising base stations and often supported by a wired network. The power of a base station varies (typically between 10 and 50 watts) ...

[Why Do Telecom Base Stations Use -48V DC Power?](#)

In modern communication networks--from 4G and 5G to future 6G--mobile base stations form the backbone of wireless connectivity. Behind this infrastructure lies a seemingly minor yet critical design choice: almost all ...



Support Customized Product



Base Stations

Power Supply: The power source provides the electrical energy to base station elements. It often features auxiliary power supply mechanisms that guarantee operation in case of lost or interrupted ...

[Why does the communication base station use -48V power supply?](#)

The power supply used in the early telephone bureau is the original lead-acid battery. The material and structure are suitable for positive grounding, the voltage is a multiple of 1.2V.



[Complete Guide to 5G Base Station Construction , Key Steps, Equipment](#)

Explore how 5G base stations are built--from site planning and cabinet installation to power systems and cooling solutions. Learn the essential components, technologies, and challenges behind 5G ...



Power Base Station

Maximum base station power is limited to 24 dBm output power for Local Area base stations and to 20 dBm for Home base stations, counting the power over all antennas (up to four).



[Communication Base Station Energy Solutions](#)

Many remote areas lack access to traditional power grids, yet base stations require 24/7 uninterrupted power supply to maintain stable communication services.

[Small Cells, Big Impact: Designing Power Solutions for 5G Applications](#)



The need to increase the number of base stations to provide wider and more dense coverage has led to the creation of small cells. Small cells are a new part of the 5G platform that increase network capacity and ...



[What is a Base Station? -- From Communication Core to Thermal ...](#)

Small/Micro Base Stations: These base stations are compact, with limited space, making thermal design more challenging. High-performance thermal materials are key to solving this problem.

WO2013086829A1

The present invention provides a base station and a power supply method therefor, and a wireless communications system for an underground mining area.





Contact Us

For catalog requests, pricing, or partnerships, please visit:

<https://iwap.com.pl>

Phone: +34 919 456 782

Email: info@iwap.com.pl

Scan the QR code to access our WhatsApp.

