



Is the communication room the base station





Overview

A base station is a fixed transceiver that serves as the central communication point for mobile devices within a defined geographical area, known as a cell. It is sometimes called a cell tower. They are communication hubs in a cellular network that ensure continuous service as users move throughout. A base station plays a pivotal role in the realm of telecommunications, acting as the cornerstone of connectivity.



Is the communication room the base station



Communications Room , AUSHFG 2025

Where a Distributed Antenna System (DAS) for in-building mobile reception is provided, the telco carrier base station equipment is to be located in the Communications Room. Refer to telco ...

[The communication base station architecture development of 2G 3G ...](#)

There are multiple functional division schemes between CU and DU, which can adapt to different communication scenarios and different communication requirements. This article ...



Base Stations

The present-day tele-space is incomplete without the base stations as these constitute an important part of the modern-day scheme of wireless communications. They are referred to as cell ...



What is a base station?

In telecommunications, a base station is a fixed transceiver that is the main communication point for one or more wireless mobile client devices.

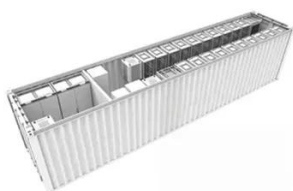


What Is A Base Station?

In summary, the base station is the active component responsible for network communication, while the tower is the physical structure that supports the base station.

[Complete Guide to 5G Base Station Construction , Key Steps, ...](#)

Key for connecting base stations into a network, this system ensures smooth communication. It becomes a top priority during power outages to maintain data flow. Outdoor base ...



[What Is a Base Station? Definition and How It Works](#)

A base station is a fixed transceiver that serves as the central communication point for mobile devices within a defined geographical area, known as a cell. It is sometimes called a cell tower.

[What are Base Station in Telecommunications?](#)



A base station connects your phone to the network. It acts as a hub between mobile devices and the core system.



Base station

In the area of wireless computer networking, a base station is a radio receiver/transmitter that serves as the hub of the local wireless network, and may also be the gateway between a wired network and the ...

[What is a Base Station in Telecommunications?](#)

Discover the role and functionality of a base station in telecommunications networks. Learn how these critical components manage communication between mobile devices and the network, ensuring ...





Contact Us

For catalog requests, pricing, or partnerships, please visit:

<https://iwap.com.pl>

Phone: +34 919 456 782

Email: info@iwap.com.pl

Scan the QR code to access our WhatsApp.

