



Is it practical to share a solar container lithium battery inverter





Overview

Summary: Pairing batteries with inverters is critical for optimizing solar energy storage. This guide explains compatibility factors, technical requirements, and practical tips to ensure seamless integration. For instance, specialized units like the LZY-MSC1 Sliding Mobile Solar Container pack fold-out solar panels, inverters and batteries into a 20-foot steel box. Deployed in under an hour, these can deliver anywhere from 20–200 kW of PV and include 100–500 kWh of battery storage. The inverter converts electricity. Both are valuable, but they solve different problems. Whether you're designing an off-grid system or upgrading existing infrastructure, learn. Lithium Solar Inverter Battery technology is changing the game for storing and using solar energy, offering an unparalleled combination of efficiency, reliability, and flexibility. We will. There are many ways to skin a cat, and even more ways to add solar power to a shipping container. Well, not really cheated, but I just went with a retail solar generator system instead of DIYing that part myself from à la carte components. It's more expensive since.



Is it practical to share a solar container lithium battery inverter



[How Lithium-Ion Batteries Work with Current Solar Inverter Systems](#)

This article will explore how lithium-ion batteries work with solar inverter systems, their benefits, and how they can help maximize your energy efficiency and performance.

[Shipping Container Solar Systems in Remote Locations: An Overview](#)

A Higher Wire system includes solar panels, a lithium iron phosphate battery, an inverter--all housed within a durable, weather-resistant shell. Our systems can be deployed quickly ...



[Best Inverter Solutions for Lithium Batteries: Reliable Options for](#)

Understanding how to pair an inverter with a lithium battery is essential for safe, efficient, and scalable power. This guide highlights top inverters and compatible lithium battery systems that ...

[How to Pair Batteries with Inverters: A Complete Guide for Solar ...](#)

This guide explains compatibility factors, technical requirements, and practical tips to ensure seamless integration. Whether you're designing an off-grid system or upgrading existing infrastructure, learn ...



[How to Choose the Right Inverter for a Lithium Battery System](#)

A well-matched inverter for lithium battery installations must support high discharge rates, tolerate rapid voltage changes, and ideally communicate with the battery management system (BMS). These ...



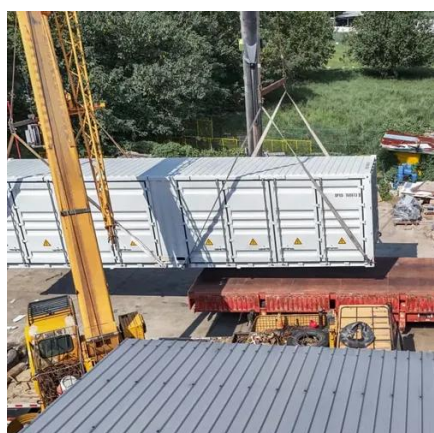
[Can I run power to a shipping container? Off-Grid Solar Solutions for](#)

In short, you can indeed run power to a container - either by extending a line from the grid or by turning the container itself into a mini power station using solar panels.



[How I turned a shipping container into a solar off-grid charging](#)

To make it all work as a solar shed, I'd have to mount the various components around the container. I started with the solar panels, which would need a frame. I used pressure-treated ...



[Is it practical to share a lithium battery inverter](#)



Matching a lithium solar battery with an inverter is a crucial step in setting up an efficient solar power system. As a supplier of lithium solar batteries, I've seen firsthand how the right



Lithium Solar Inverter Battery: How It Works, Benefits & Integration ...

In this blog, we will break down exactly how lithium-ion batteries work with modern solar inverter systems. We will also debunk common myths and give you the technical and practical ...

[Solar Inverters vs Batteries: Myths About Backup Power](#)

Confused about solar inverters vs batteries? Bust common backup power myths, see clear sizing steps, and get data-backed tips for reliable home energy.

12.8V 200Ah





Contact Us

For catalog requests, pricing, or partnerships, please visit:

<https://iwap.com.pl>

Phone: +34 919 456 782

Email: info@iwap.com.pl

Scan the QR code to access our WhatsApp.

