



# Instructions for Use of Rack-Mounted Lithium Battery Cabinets for Hotels





## Overview

---

Installing rack-mounted lithium batteries, such as LiFePO<sub>4</sub> batteries, requires careful planning and execution to ensure optimal performance and safety. This guide provides a detailed, step-by-step process for installing these batteries effectively. Our suite of backup power, power distribution and power management products are designed to protect you from a host of threats. The AES RACKMOUNT is a battery module that can operate independently or in a battery bank configuration where multiple battery modules are connected in parallel. AUDIENCE, MESSAGES, WARNINGS, GENERAL SAFETY, PERSONAL PROTECTIVE EQUIPMENT Configuration, installation, service, and operating tasks. With 10, 13, 16, or 17 Battery Modules Installation and Operation LIBSESMG10IEC, LIBSESMG13IEC, LIBSESMG16IEC, LIBSESMG17IEC LIBSESMG10UL, LIBSESMG13UL, LIBSESMG16UL, LIBSESMG17UL Latest updates are available on the Schneider Electric website 12/2024 [www.com](http://www.com) Legal Information The information. Version: 1.



## Instructions for Use of Rack-Mounted Lithium Battery Cabinets for Ho



### [AES RACKMOUNT INSTALLATION AND OPERATION MANUAL ...](#)

Only use the battery module with a charging system that meets specifications. Using a battery module or charger that does not meet specifications may present a risk of fire, explosion, leakage, or other ...

### [Eaton Samsung Gen 3 Battery Cabinet Installation and Operation ...](#)

Use the procedures and illustrations in this section to create a logical plan for installing the battery cabinet. This section contains the following information:



### [AES RACKMOUNT INSTALLATION AND OPERATION MANUAL ...](#)



Introduction  
1.1 Audience  
1.2 Warning, Caution, Notice, and Note Messages  
1.3 General Warnings  
1.4 Safe Handling Procedures  
1.5 Personal Protective Equipment  
3.1 Electrical Specifications  
5. HANDLING  
6.1 Battery Module Breaker  
6.2 Battery Module ON/OFF Key  
7.3 Battery Management System  
9. INSTALLATION  
9.1 Tools  
9.4 DC Protection  
9.6 Single Battery Module Installation Procedure  
9.6.1 Installation Procedure  
9.7.1 Installation Procedure  
10.2 State of Charge  
10.3.1 Closed-Loop Charging  
11. ROUTINE INSPECTION  
The AES RACKMOUNT is a battery module that can operate independently or in a battery bank configuration where multiple battery modules are connected in parallel. See more on discoverbattery schneider-electric [PDF]

## Galaxy Lithium-ion Battery

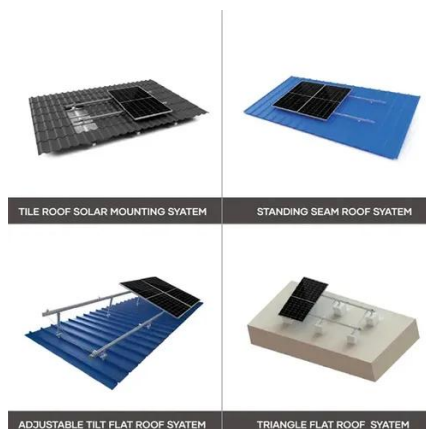


## Cabinet

Important Safety Instructions -- SAVE THESE INSTRUCTIONS. Read these instructions carefully and look at the equipment to become familiar with it before trying to install, operate, service or maintain it.

### [How to Install 4U Lithium Battery Racks: Expert Guidelines](#)

Installing a 4U lithium battery rack requires adherence to safety protocols, compatibility verification, and thermal management. Key steps include preparing tools like torque wrenches, mounting the rack in a ...



### [Lithium-ion Battery Pack User Manual 51.2V105Ah-Rack-Mounted](#)

Please comply with all warnings and operating instructions in this manual strictly. Save this manual properly and read carefully the following instructions before installing the unit. Do not operate this unit ...



## Galaxy Lithium-ion Battery Cabinet

Important Safety Instructions -- SAVE THESE INSTRUCTIONS. Read these instructions carefully and look at the equipment to become familiar with it before trying to install, operate, service or maintain it.

### [Step-by-Step Installation Guide for Rack Mounted Lithium Batteries](#)

Following this step-by-step guide ensures a safe and effective installation of rack-mounted lithium



batteries. Proper installation not only enhances battery performance but also ...



### [Galaxy Lithium-ion Battery Cabinet Installation and ...](#)

The documentation available online is generally the latest version.



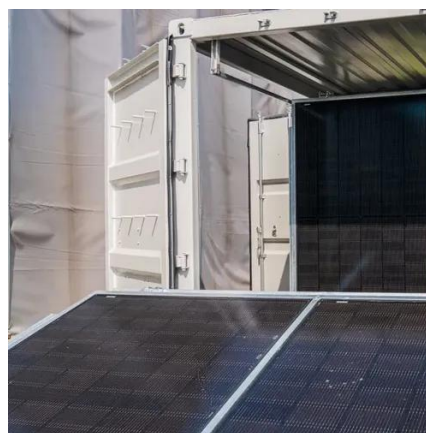
### [Lithium battery cabinet installation instructions](#)

This manual describes how to install LG Chem EM048126P3S series lithium rack mounted battery modules into a supplied Cabinet and wire them to a supplied DC Distribution Board.



### [The Definitive Guide to Racks and Cabinets for Battery Banks](#)

In this comprehensive guide, we will delve deep into the world of battery racks and cabinets. We will demystify their function, analyze different types and materials, and break down the ...



### [How to Install a Rack Lithium Battery System in 2025](#)



Rack lithium battery systems are advanced energy storage solutions designed specifically for integration into server racks. They provide backup power during outages, enhance energy efficiency, and ...





## Contact Us

---

For catalog requests, pricing, or partnerships, please visit:

<https://iwap.com.pl>

Phone: +34 919 456 782

Email: [info@iwap.com.pl](mailto:info@iwap.com.pl)

Scan the QR code to access our WhatsApp.

