



# Increase the wattage of solar charging panels





## Increase the wattage of solar charging panels

---



### [How to increase solar panel output: 6 actionable tips](#)

Here's an overview of some actionable steps you can take to improve solar panel efficiency: 1. Make sure there's nothing blocking your solar panel (shade or dirt) 2. Set the right tilt ...

### [How to Calculate Charging Time of Battery by Solar Panel](#)

Panel wattage, sunlight hours, and battery size directly affect charge time. MPPT charge controllers boost efficiency, especially in low light. Clean panels, proper tilt, and correct cable size =

...



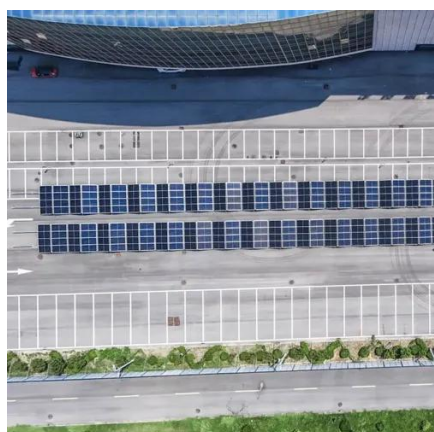
### [Everything You Need to Know About Solar Chargers , BatteryStuff](#)

In most cases where a 6-watt or larger solar panel is installed, the use of a charger controller is highly recommended. In a nutshell, a solar charge controller acts like an on and off ...



### [Solar Panel Charging Time Calculator , SolarMathLab](#)

Increase panel wattage if charging time exceeds your energy needs. Monitor battery health and temperature; extreme cold or heat can reduce effective charge acceptance. Consider partial charging ...



### [9 Proven Ways to Speed Up Portable Solar Charging](#)

Speed up portable solar charging with 9 field-tested tactics. Get faster, more reliable off-grid power using correct angles, MPPT, wiring, and battery care.

### **I need to add more solar panel charging**

There's a concept known as over-paneling where you stay within the max voltage range of your MPPT controller but increase the total current your solar arrays are able to generate by wiring ...



### [How To Fast-Charge A Battery With A Solar Panel?](#)

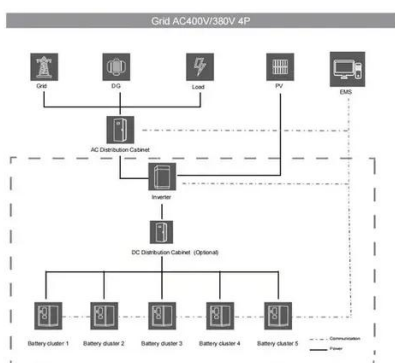
Discover how to fast-charge a battery with solar panels. Learn techniques, factors, and real-world applications for maximum efficiency.



### [Can You Boost Charging Performance by Adding More 200W Solar Panels?](#)



Adding more 200W panels can indeed increase your solar charging performance. The combined power output will result in more energy being generated during peak sunlight hours. This ...



### [Does Adding More Solar Watts Help Power Battery Charging ...](#)

Increasing solar panels boosts energy output. This results in quicker recharging of the battery. For instance, connecting four extra 100W panels in parallel to your current system enhances ...

### **Increasing wattage**

You connect your additional panels to the additional controller, then connect the controller to either the AIO terminals, bus bar or batteries, whichever is convenient.





## Contact Us

---

For catalog requests, pricing, or partnerships, please visit:

<https://iwap.com.pl>

Phone: +34 919 456 782

Email: [info@iwap.com.pl](mailto:info@iwap.com.pl)

Scan the QR code to access our WhatsApp.

