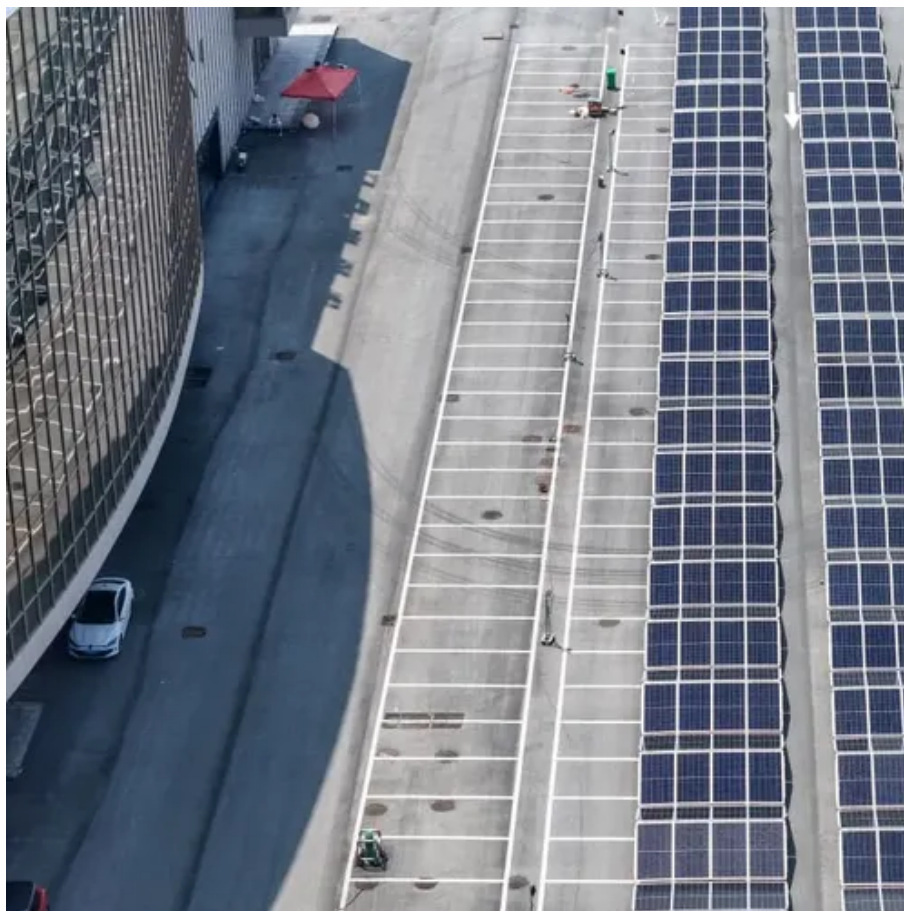




How to measure the angle of photovoltaic panels





Overview

In this guide, we'll break down the science behind the best solar panel angle, explain how to calculate it based on latitude, show seasonal adjustments, and share competitor-winning insights for 2025. Enter your address to find the optimal solar panel tilt angle for your location. Accurate angle measurement ensures your panels get the most sunlight. To make the most of your solar panels, they must be positioned at the. The solar panel's best angle determines how much sunlight your panels capture throughout the year, directly impacting energy production and ROI. A correctly tilted system can improve efficiency by 5-10% annually, reducing payback time and boosting long-term savings.



How to measure the angle of photovoltaic panels



[Solar Panel Angle: Definition, and How to Calculate](#)

A solar panel angle calculator is a tool used to determine the ideal tilt angle for solar panels based on a range of factors such as location, time of year, and required energy output.

[Solar Panel Angle Calculator: The Definitive Guide](#)

Our guide on solar panel angles explains how adjusting the tilt can optimize energy production, maximizing solar output.



How to Calculate Solar Panel Tilt Angle?

Our guide on solar panel angles explains how adjusting the tilt can optimize energy production, maximizing solar output.



[How to Measure Angles for Solar Panel Installation: Expert Guide](#)

This guide will help you understand the basics of measuring angles for optimal solar panel installation. By following these steps, you'll ensure your solar panels are set up for maximum ...



[Solar Angle Calculator , Solar Panel Angle Calculator](#)

This solar angle calculator tells you by location the optimum angle to get the best out of your system. To get the best out of your photovoltaic panels, you need to angle them towards the sun. The optimum ...



How to Calculate Solar Panel Tilt Angle?

There are different solar panel tilt angle formulas or calculation methods that can be used to determine the optimal tilt angle for a solar panel. Here are three common formulas.



[How To Calculate The Ideal Solar Panel Angle By Location & Energy ...](#)

Below is a step-by-step, actionable framework to calculate the angle for any location and goal-with real-world examples and tools to simplify precision. Latitude is the starting point for all angle calculations, ...



Solar Panel Tilt Angle Calculator



Simply enter your address and it will provide the optimal angles for each season, as well as a year-round average angle for your specific location. An example of the calculator results.



[How to Determine the Optimal Solar Tilt Angle: A Step-by-Step Guide](#)

To determine the optimal solar tilt angle for photovoltaic panels, one must consider geographic location, seasonal changes, and household energy needs, with a common approach ...

[Solar Panel Angle: how to calculate solar panel tilt angle?](#)

Here are two simple methods for calculating approximate solar panel angle according to your latitude. The optimum tilt angle is calculated by adding 15 degrees to your latitude during winter, and ...



[Solar Panel Best Angle , Tilt & Orientation Guide 2025](#)

In this guide, we'll break down the science behind the best solar panel angle, explain how to calculate it based on latitude, show seasonal adjustments, and share competitor-winning insights ...



Contact Us

For catalog requests, pricing, or partnerships, please visit:

<https://iwap.com.pl>

Phone: +34 919 456 782

Email: info@iwap.com.pl

Scan the QR code to access our WhatsApp.

