



How to hang colored steel tiles after photovoltaic panels are installed





Overview

Selecting an optimal mounting system is crucial for securing solar panels to color steel tiles. First, assess the structure's integrity to ensure it can support the solar system, followed by selecting appropriate mounting systems tailored for. First of all, we need to calculate and determine the position of the bracket base based on the area, and install and fix the base. See how SunPower can protect your roof's integrity while providing the. To successfully install colored steel tiles using solar energy, one should ensure certain key elements are meticulously addressed. Understand the materials and tools required for the process, 2. Follow specific installation.



How to hang colored steel tiles after photovoltaic panels are installed

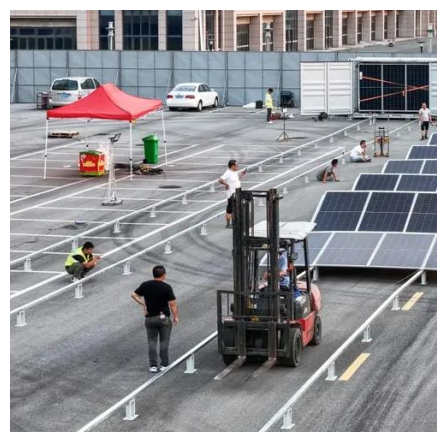


[SO EASY! How to INSTALL solar panel brackets on color steel tiles?](#)

First of all, we need to calculate and determine the position of the bracket base based on the area, and install and fix the base. Then screw the solar panels onto the base correctly. Keep the

[The Ultimate Guide to Color Steel Tile Roof Photovoltaic Bracket](#)

Installing photovoltaic brackets on color steel tile roofs is a straightforward but crucial part of any solar energy system. By following the proper steps, adhering to best practices, and avoiding ...



[How to place solar energy on color steel tiles . NenPower](#)

Selecting an optimal mounting system is crucial for securing solar panels to color steel tiles. There are various mounting options available, including penetration mounts, ballasted mounts, ...

[Colored steel tile photovoltaic panel installation bracket diagram](#)

In this comprehensive guide, we will walk you through everything you need to know about color steel tile roof solar mounting systems - from their advantages and optimal placement



[Tutorial on installing photovoltaic panels on colored steel tiles](#)

In this comprehensive guide, we will walk you through everything you need to know about color steel tile roof solar mounting systems - from their advantages and optimal placement

Color steel tile installation

The color steel tile roofing system is designed for color steel roof distributed power stations. It is made of aluminum alloy and is light in weight, which can reduce the load on the roof.



[How to install colored steel tiles with solar energy](#)

Once the solar panels have been successfully installed, the next step involves laying down the colored steel tiles. This procedure requires precision to ensure that tiles interlock correctly, ...



[How to install solar photovoltaic on color steel tiles](#)



In summation, undertaking the process of integrating solar photovoltaic systems on color steel tiles demands a structured approach that considers design specifics, material selection, and ...



[Photovoltaic Color Steel Tile Bracket Installation: Your Go-To Guide](#)

That's what installing photovoltaic color steel tile brackets feels like without proper guidance. These unassuming metal pieces are the unsung heroes of solar panel systems, responsible for keeping ...



[How to install solar energy on the roof of colored steel tiles](#)

To effectively install solar energy systems on colored steel tiles, one must consider a range of essential factors, including 1. Understanding the roof structure, 2. Selecting appropriate ...





Contact Us

For catalog requests, pricing, or partnerships, please visit:

<https://iwap.com.pl>

Phone: +34 919 456 782

Email: info@iwap.com.pl

Scan the QR code to access our WhatsApp.

