



# How to connect the circuit breaker of the battery cabinet





## Overview

---

Connect the battery cable accessory to one end of the battery port on the rear panel of the UPS and connect the other end to any battery port on the rear panel of the EBC. Make sure they are in parallel. Open the circuit breaker on each EBC. System drawings and schematics are reviewed and clearly understood. If there are any questions concerning this manual or any of the installation or maintenance procedures and/or maintenance should always be performed with heavily insulated tools. **IMPORTANT!** Non-certified technicians are prohibited from opening the chassis cover of the battery cabinet. Refer to ZincFive's BC Series UPS Battery Cabinet Service Manual for information related to servicing and. How do you put positive and negative wires in a circuit breaker?

Wiring needs to be set up so the positive wires go on one side (Top), and negative wires go on the other side (Bottom). The + does not mean put the positive wire here and - means put the negative wire here. Exercise extreme caution not to.



## How to connect the circuit breaker of the battery cabinet



[-48 VDC Battery Cabinet Installation and User Manual \(Section ...](#)

Connect the power system's battery cable terminated in an Anderson connector to the first battery cabinet's battery cable terminated in a mating Anderson connector.

### DC screen battery cabinet installation

Procedure 1. Furnished with the battery cabinet are battery disconnect circuit breaker alarm lead assemblies. Refer to the power system installation manual to use these alarm leads to connect the ...



[How to connect the battery cabinet to the double circuit breaker](#)

Marine battery circuit breakers work like any other type of circuit breaker -- by disrupting the flow of current in an electrical circuit when the current becomes too hot or too strong for the cords and ...

[SolaHD S4K-D External Battery Cabinet QIG Manual PDF](#)

Open the circuit breaker on the EBC. Connect the battery cable accessory to one end of the battery port on the rear panel of the UPS and connect the other end to any battery port on the rear panel of the ...



### [Liebert® EXS External Battery Cabinet Installer/User Guide](#)

Connect the system battery cables from the UPS battery terminals (+, N, -) to battery cabinet breaker BCB (+, N, -) as shown in Figure 3.3 on page 17 . Make sure that the battery connections are made ...

### **Connect the Power Cables**

Connect the DC+ and DC- cables to the DC+ and DC- terminals. Connect the power cables in the UPS. If more battery cabinets are part of the solution, connect all battery cabinets to the UPS according to ...



### [Mitsubishi Electric Power Products, Inc. BC43 Battery Cabinet](#)

Battery cabinets that are not supplied with an incorporated DC output disconnect device must have an appropriate disconnect device provided external to the cabinet.



### [BC58 Battery Cabinet Installation, Operation, & Maintenance ...](#)

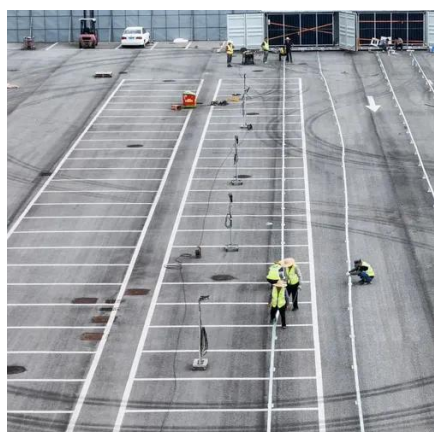


The option provides functional access to the equipment circuit breaker via a handle located on the exterior of a cabinet door that is physically connected to the circuit breaker in the cabinet's interior.

### Commercial and Industrial ESS

Air Cooling / Liquid Cooling

- Budget Friendly Solution
- Renewable Energy Integration
- Modular Design for Flexible Expansion



### U-ENM00044

Each cabinet is supplied with a mechanical ground lug attached to the circuit breaker mounting plate, that accepts stranded copper wire from #14 AWG to 1/0 cable sizes.

### UPS Battery Cabinets

Once the battery cabinet is configured with UVR access, wait until the UPS outputs its rated UVR voltage, prior to turning on the circuit breaker. o UVR/Shunt Pin 1 = POSITIVE (+) Polarity





## Contact Us

---

For catalog requests, pricing, or partnerships, please visit:

<https://iwap.com.pl>

Phone: +34 919 456 782

Email: [info@iwap.com.pl](mailto:info@iwap.com.pl)

Scan the QR code to access our WhatsApp.

