



How much wind power can be generated in a day





Overview

On average, a modern utility-scale wind turbine can produce approximately 3 to 12 megawatt-hours (MWh) of electricity per day, depending on factors like wind speed, turbine size, and location. This amount can power hundreds to thousands of homes daily. Wind turbines are a significant contributor to renewable energy, producing an average of 1. Wind is the third largest source of electricity in the United States with 40 of the 50 states having at least one wind farm. Fan capacity (rated power) This is the maximum power that a wind turbine can output under optimal conditions, measured in kilowatts (kW) or megawatts (MW). Small fan (such as. Can I expect a wind turbine to produce electricity at consistent levels throughout the day, or will output vary due to changing weather conditions?

Let's dive into the specifics of wind turbine capacity and efficiency, which directly impact how much electricity a turbine can produce.



How much wind power can be generated in a day

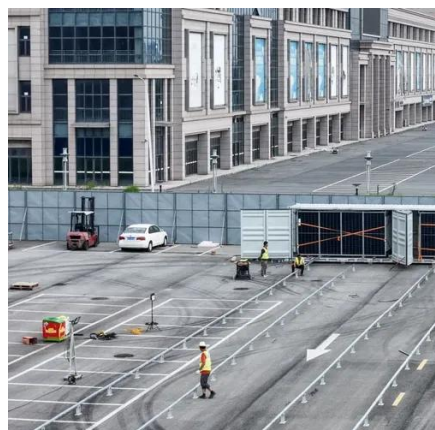


[How Much Power Can A Wind Turbine Produce Per Day](#)

Wind turbines are a significant contributor to renewable energy, producing an average of 1. 8-90 kWh of energy per day. With an average wind speed of 8 m/s, each turbine can generate ...

[How much energy can a single wind turbine generate in a day?](#)

With a good wind, it could generate more than 300.000 kWh in a single day. In some countries, wind farms have been able to supply up to 50% of energy demand at certain times. Offshore wind farms ...



[How Many Kwh Does A Wind Turbine Generate Per Day](#)

Wind turbines can generate a range of 1. 8-90 kWh of energy per day, depending on factors such as wind speed, blade size, and turbine design. Every year, wind turbines produce about ...

[How Much Power Does a Wind Turbine Produce Per Day?](#)

On average, a modern utility-scale wind turbine can produce approximately 3 to 12 megawatt-hours (MWh) of electricity per day, depending on factors like wind speed, turbine size, and ...



[How Many kWh Does a Wind Turbine Produce Per Day?](#)

Large, utility-scale wind turbines, commonly seen in wind farms, produce substantial amounts of power. A typical modern utility-scale turbine, often around 2 to 3 megawatts (MW) in ...



[How Much Energy Does a Wind Turbine Produce?](#)

Every year, wind turbines produce about 434 billion kilowatts (kWh) of electricity a year. Just 26 kWh of energy can power an entire home for a day. Wind is the third largest source of ...



[Harnessing Wind Power: How Much Electricity Can a Turbine Produce?](#)

A typical small wind turbine (2-3 kW capacity) might produce around 200-300 kilowatt-hours (kWh) of electricity in a single day, given an average wind speed of 7 m/s.



[Power Generated by One Wind Turbine: How Much Electricity One ...](#)



On a windy day, one turbine can generate massive amounts of power. On calm days, output may drop close to zero. This variability is normal for wind turbine power generation. In strong wind regions, the ...



[How much electricity can a wind turbine generate per day?](#)

A mainstream 2-3 MW onshore wind turbine can generate an average of 15000 to 25000 kWh of electricity per day under favorable wind resource conditions. The specific values must be ...



Contact Us

For catalog requests, pricing, or partnerships, please visit:

<https://iwap.com.pl>

Phone: +34 919 456 782

Email: info@iwap.com.pl

Scan the QR code to access our WhatsApp.

