



# How much power does the inverter usually have





## How much power does the inverter usually have



### [How Many Watts Does an Inverter Usually Have? A Practical Guide ...](#)

How Many Watts Does an Inverter Usually Have? A Practical Guide for 2024 Summary: Inverters typically range from 150W to 15,000W depending on their application.

### **Inverter Specifications and Data Sheet**

Some or all of the specifications usually appear on the inverter data sheet. Maximum AC output power. This is the maximum power the inverter can supply to a load on a steady basis at a specified output ...



### [The Only Inverter Size Chart You'll Ever Need](#)

How to Determine What Size Inverter I Need? What Are The Two Types of Power loads? Inverter Size Chart What Will A 300W Inverter Run? What Will A 500W Inverter Run? What Will A 700W Inverter Run? What Will A 1000W Inverter Run? What Will A 1500W Inverter Run? What Will A 2000W Inverter Run? What Will A 3000W Inverter Run? We have summarized the appliances that inverters from 300W to 3000W can run depending on their rated maximum power. Note to our readers: Use the above formula to determine how many appliances each inverter size can run simultaneously. See more on climatebiz Mastervolt

## **Frequently Asked Questions about Inverters - Mastervolt**

There is a simple method to calculate how much power your inverter is using: For 12-volt inverters,



divide the connected load by 10; for 24-volt inverters, divide by 20.

### [How much energy does an inverter consume?](#)

An inverter itself consumes a small amount of energy, usually between 5 and 20 watts during operation. Thanks to the high efficiency of modern inverters, their own consumption hardly affects your overall ...

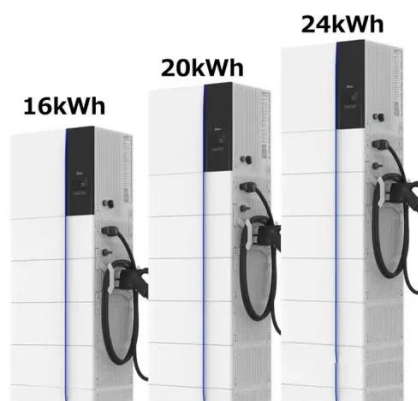


### [Understanding Inverter Power Consumption: Do Inverters Use Power ...](#)

Inverters, despite being turned off, can still draw a small amount of power. Most inverters today consume minimal power when not actively converting electricity. Typically, this is in the range ...

### [The Only Inverter Size Chart You'll Ever Need](#)

During our research, we discovered that most inverters range in size from 300 watts up to over 3000 watts. In this article, we guide you through the different inverter sizes. Additionally, you'll ...



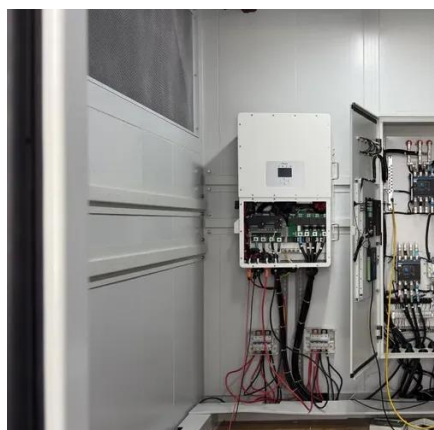
### [How Much Power Does a Solar Inverter Need](#)

Solar inverter or photovoltaic inverter is a power inverter that can easily convert direct current to AC. Returning to the solar inverter power needs, it is around 10-25 W, and its efficiency ...



### [Inverter Efficiency: Understanding How Much Power You're Really ...](#)

In simple terms, inverter efficiency refers to how well an inverter converts DC electricity into usable AC power. No inverter is 100% efficient--some energy always gets lost as heat during ...



### [Frequently Asked Questions about Inverters](#)

There is a simple method to calculate how much power your inverter is using: For 12-volt inverters, divide the connected load by 10; for 24-volt inverters, divide by 20.

### [Inverter Power Draw: How Much Power Does an Inverter Use from a ...](#)

According to the U.S. Department of Energy, modern inverters can have efficiency ratings between 80% to 95%. This means that if an inverter needs to deliver 1,000 watts of AC ...



### [Understanding Inverter Rated Power: A Complete Guide for Optimal](#)



It is typically measured in watts (W) or kilowatts (kW) and indicates the inverter's capacity to convert DC (direct current) power from sources like batteries or solar panels into AC (alternating current) power ...



## Contact Us

---

For catalog requests, pricing, or partnerships, please visit:

<https://iwap.com.pl>

Phone: +34 919 456 782

Email: [info@iwap.com.pl](mailto:info@iwap.com.pl)

Scan the QR code to access our WhatsApp.

