



How much load can the energy storage power station handle





Overview

How many tons can the energy storage power station bear?

To understand how many tons an energy storage power station can bear, it's essential to consider several factors. A battery energy storage system (BESS) is an electrochemical device that charges (or collects energy) from the grid or a power plant and then discharges that energy at a later time to. An energy storage system (ESS) for electricity generation uses electricity (or some other energy source, such as solar-thermal energy) to charge an energy storage system or device, which is discharged to supply (generate) electricity when needed at desired levels and quality. ESSs provide a variety. Ever wondered how energy storage systems handle sudden power demands during heatwaves or industrial peaks?

The secret lies in their maximum discharge capacity - a critical metric determining how quickly stored energy can be released. These facilities require efficient operation and management functions, including data collection capabilities, system control, and management capabilities. Imagine your smartphone battery shrinking by 50% overnight - suddenly, your "all-day battery life" claims become comedy material.



How much load can the energy storage power station handle



STORAGE FOR POWER SYSTEMS

Dedicated energy storage ignores the realities of both grid operation and the performance of a large, spatially diverse renewable energy source. Because power systems are balanced at the system ...

[Capacity of Energy Storage Power Stations: The Backbone of Modern](#)

Now scale that up to power grids, and you'll understand why the capacity of energy storage power stations has become the hottest topic in energy circles. As renewable energy adoption ...



Battery energy storage system

Since battery storage plants require no deliveries of fuel, are compact compared to generating stations and have no chimneys or large cooling systems, they can be rapidly installed and placed if ...

[SineSunEnergy . SSE48400 Power Rack ESS . Solar Storage System](#)

Founded in 2009, SineSunEnergy has been focusing on lithium battery energy storage product development and application, providing leading lithium battery energy storage system integrated ...

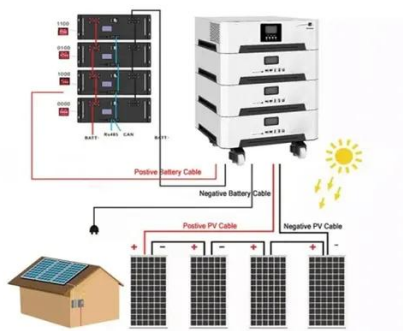


How Grid Energy Storage Works

As we learned earlier, an electric company may store energy at a power plant to supply power on high-demand days. The plant will need big power all day, and only compressed air and ...

[How many tons can the energy storage power station bear?](#)

To understand how many tons an energy storage power station can bear, it's essential to consider several factors. 1. Capacity limitations, 2. Material strengths, 3. Design specifications, 4. ...



[Maximum Discharge Capacity of Energy Storage Power Stations: ...](#)

Ever wondered how energy storage systems handle sudden power demands during heatwaves or industrial peaks? The secret lies in their maximum discharge capacity - a critical metric determining ...

[Battery storage power station - a comprehensive guide](#)



The guide covers the construction, operation, management, and functionalities of these power stations, including their contribution to grid stability, peak shaving, load shifting, and backup power.



[Energy storage for electricity generation](#)

In 2022, the United States had four operational flywheel energy storage systems, with a combined total nameplate power capacity of 47 MW and 17 MWh of energy capacity.

[Grid-Scale Battery Storage: Frequently Asked Questions](#)

Storage duration is the amount of time storage can discharge at its power capacity before depleting its energy capacity. For example, a battery with 1 MW of power capacity and 4 MWh of usable energy ...





Contact Us

For catalog requests, pricing, or partnerships, please visit:

<https://iwap.com.pl>

Phone: +34 919 456 782

Email: info@iwap.com.pl

Scan the QR code to access our WhatsApp.

