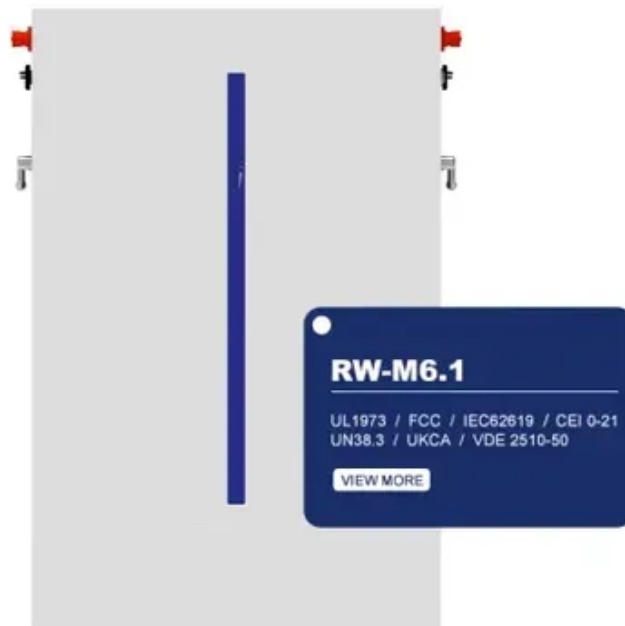




How much is the static load of photovoltaic panels





Overview

On average, a complete solar array adds about 2 to 4 pounds per square foot (psf) to the roof. The mechanical load values indicated on photovoltaic module data sheets (such as 5400Pa / 2400Pa) correspond to the panel's ability to withstand external loads, mainly due to wind and snow. These loads are linked to tests as early as IEC 61215: 2021, which imposes these minimum resistances on. This test is used to verify the test maximum load that a PV module must withstand. Additional requirements may apply to certain installations and climates. Racking and Mounting Hardware: The metal rails, clamps, and. Misjudging energy load can lead to one of two costly outcomes: Undersized systems result in frequent grid reliance, poor battery performance, and insufficient backup capacity. Oversized systems waste money on unnecessary panels and batteries, driving up initial costs with minimal gains. Understanding the concept of load, 2. Ever heard of the phrase, "as constant as the northern star?

" Well, that's what dead loads are like. The weight of the solar panels.



How much is the static load of photovoltaic panels



[How Much Load Do Photovoltaic Panels Require? The Roof-Top ...](#)

It's literally a weighty matter for your roof. I've seen homeowners get more excited about panel efficiency than structural requirements, only to face a nasty surprise when their roofer says: "Your attic wasn't ...

Solar module load capacity

When it comes to the load capacity of solar modules, SUNLAB is ready as a service provider. On our load table, PV modules have to show what they can withstand.



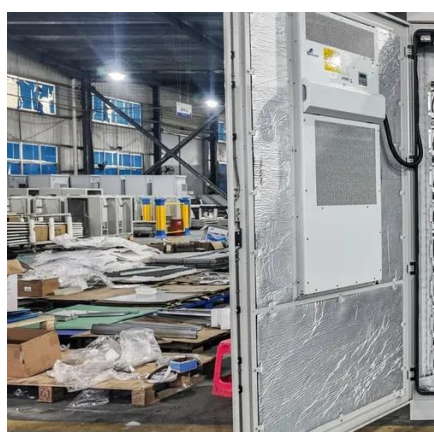
Dead And Live Loads

Dead loads refer to the static forces that are relatively constant throughout the life of the structure, as the weight of the panels themselves. Picture this, you're at a party and there's that one person who stays ...



[Understanding Roof Load Capacity for Solar Panels](#)

In most cases, a solar panel installation will now only increase the load on a roof by somewhere around 2 to 4 pounds per square foot. The number of solar panels you install generally ...

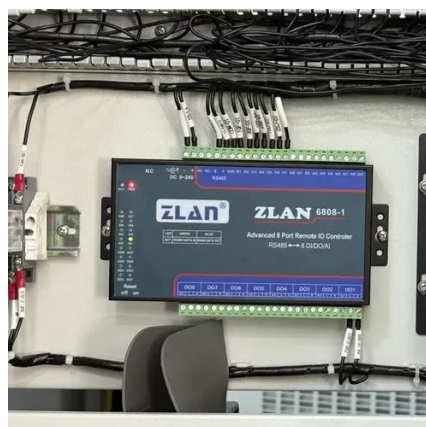


Mechanical loads on PV modules

Manufacturers subject their panels to various tests to validate their durability. In this context, photovoltaic modules undergo static load tests under pressure and suction to simulate ...

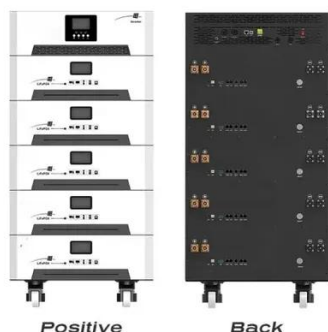
[Solar Power System Load Calculation Made Simple: ...](#)

Master solar power system load calculation to avoid oversizing or shortages. Design efficient, right-sized solar systems with confidence.



[How Much Weight Do Solar Panels Add to a Roof?](#)

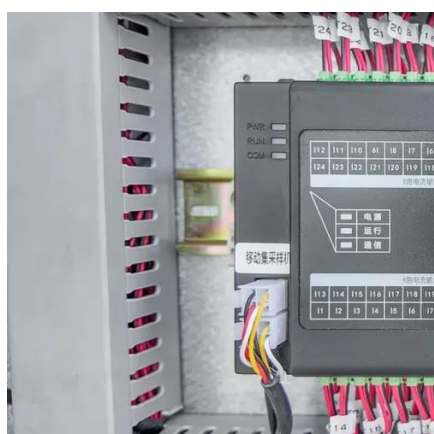
For most residential pitched roofs, a solar array adds a relatively small and manageable amount of weight per unit of area. The total weight of a flush-mounted system, which includes the ...



[How to calculate the load of solar panels, NenPower](#)



Different panels convert sunlight into electricity at varying rates, typically ranging from 15% to over 22%. A highly efficient panel captures more energy from the same amount of sunlight, ...

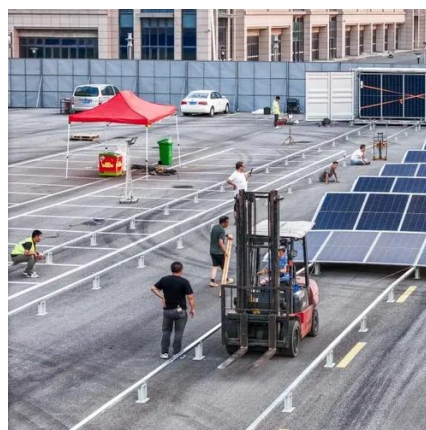


[How to run a structural load analysis for rooftop PV racking](#)

This guide details the critical steps for a structural load analysis of PV racking, from wind load calculations to assessing your roof's capacity for a secure solar installation.

The impact of static wind load on the mechanical integrity of different

This research aims to investigate the impact of static wind load on the performance of mono-crystalline PV modules commercially available in Pakistan. These modules differ greatly in ...





Contact Us

For catalog requests, pricing, or partnerships, please visit:

<https://iwap.com.pl>

Phone: +34 919 456 782

Email: info@iwap.com.pl

Scan the QR code to access our WhatsApp.

