



How much electricity can a 200w solar panel generate





How much electricity can a 200w solar panel generate



[200W Solar Panel Guide \(2025\): Real Output, What It Runs, Charge ...](#)

If you just want the bottom line, here's the quick version-- what can a 200W solar panel run, how much energy it really makes per day, and when it's smarter to double up.

[200W Solar Panel Complete Guide 2025: Performance & Best Brands](#)

In real-world conditions, your 200W solar panel will typically produce between 120-180 watts depending on weather, time of day, and installation factors. Based on extensive field testing ...



[How Many kWh Does A Solar Panel Produce Per Day? Calculator](#)

We can see that a 300W solar panel in Texas will produce a little more than 1 kWh every day (1.11 kWh/day, to be exact). We can calculate the daily kWh solar panel generation for any panel at any ...

[How much can 200w solar photovoltaic power generation charge](#)

On average, solar panels can generate about 4 to 6 hours of usable sunlight per day, referred to as peak sun hours, depending on geographic and seasonal factors. For instance, regions ...



How Much Will a 200W Solar Panel Charge?

Under Standard Test Conditions (STC) -- 1,000W/m² irradiance, 25°C cell temperature, and AM1.5 spectrum -- a 200W panel is rated to output 200 watts of power. With an assumed 5 Peak ...



[What Can A 200 Watt Solar Panel Power? A Complete Guide](#)

A 200W/12V solar panel that gets 5 peak sun hours a day can produce 1000Wh of energy every day. That's enough energy to charge a 100Ah/12V battery or two 50Ah/12V batteries wired in ...



51.2V 150AH, 7.68KWH

[200W Solar Panel Output: \(Amps, Watts, Volts\) - Dot Watts®](#)

Depending on where you live and the time of year, you can usually count on about 4 to 6 hours of good, strong sunlight. So, what does that mean ...



[200 Watt Solar Panel: What Will It Run in Your Home?](#)



Depending on where you live and the time of year, you can usually count on about 4 to 6 hours of good, strong sunlight. So, what does that mean for your daily power? A 200W panel will ...

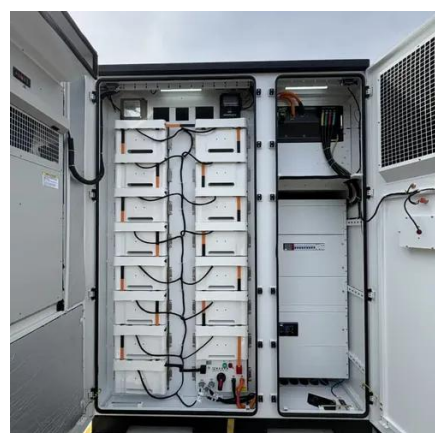


[How much electricity does a 200w solar panel generate?](#)

A 200W solar panel is capable of producing up to 200W of electricity under optimal conditions, with an average voltage output of 17.5V and an average current output of 11.4A.

[How Much Power Does a 200 Watt Solar Panel Produce?](#)

How much power does a 200 watt solar panel produce? You have learned that a 200-watt solar panel system typically generates 200 watts of power in ideal conditions.



[200W Solar Panel Output: \(Amps, Watts, Volts\) - Dot Watts®](#)

how much power does a 200 watt solar panel produce? Now let's calculate how much power will a 200 watt solar panel produce in watt-hours, amps, and volts. A 200 watt solar panel will ...



Contact Us

For catalog requests, pricing, or partnerships, please visit:

<https://iwap.com.pl>

Phone: +34 919 456 782

Email: info@iwap.com.pl

Scan the QR code to access our WhatsApp.

