



How much current does the energy storage cabinet battery have to charge





Overview

The charging current, measured in amperes (A), determines how quickly electrical energy can be transferred into the battery. However, batteries have a maximum charging current limit to prevent overheating and damage. If the. A battery energy storage system (BESS) is an electrochemical device that charges (or collects energy) from the grid or a power plant and then discharges that energy at a later time to provide electricity or other grid services when needed. It is typically expressed in ampere-hours (Ah) or kilowatt-hours (kWh). There are two types of capacity to consider: Nominal Capacity: The rated capacity under standard conditions (e.



How much current does the energy storage cabinet battery have to c



[How much electricity does the energy storage cabinet store?](#)

The capacity of an energy storage cabinet is primarily determined by its battery technology. Numerous types of batteries exist, including lithium-ion, lead-acid, and flow batteries, ...

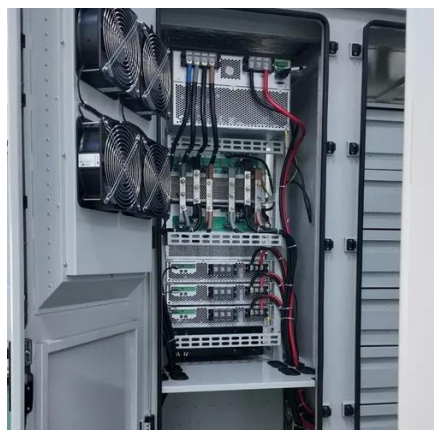
DLG E-Box LFP Battery User Manual

The document is a user manual for DLG's E-Box Series LFP battery. It provides specifications for 3 battery models, including their nominal voltage, capacity, dimensions, weight, charging/discharging ...



[What does the energy storage cabinet mainly include?](#)

Most energy storage cabinets house either lithium-ion or lead-acid batteries, known for their efficiency and reliability. Power management systems facilitate the distribution and conversion ...



[Pytes Energy LFP Battery 5.12kW 100Ah 48VDC](#)

Pytes E-BOX SERIES LFP Battery User Manual Keep the battery SOC to 40%-60% during storage. The Self-discharge of the LFP battery pack is 1-2% per month. Disconnect the LFP battery from all loads ...



[Complete Guide to Home Energy Storage Systems - Battery Specs](#)

Discover how to select and configure home energy storage batteries with Yohoo Elec. Learn about key parameters like capacity, C-rate, DOD, and design strategies for peak shaving, ...



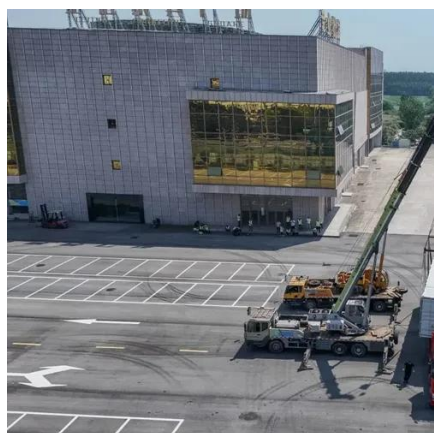
[How much power does the energy storage battery cabinet have](#)

An energy storage system (ESS) for electricity generation uses electricity (or some other energy source, such as solar-thermal energy) to charge an energy storage system or device, which is discharged to ...



[How does the energy storage cabinet charge? .. NenPower](#)

To charge an energy storage cabinet, the DC needs to be converted into the appropriate voltage and current, which is where the inverter comes into play. Wind energy serves as another ...



[Grid-Scale Battery Storage: Frequently Asked Questions](#)



By charging the battery with low-cost energy during periods of excess renewable generation and discharging during periods of high demand, BESS can both reduce renewable energy curtailment ...

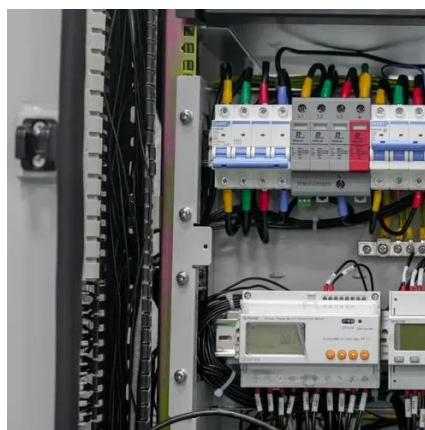


[How to calculate how much electricity the energy storage cabinet can](#)

The calculation of how much electricity an energy storage cabinet can store involves a complex interplay of factors, requiring an analytical approach for accurate estimation.

What is the charging time of an outdoor energy storage battery cabinet

As the battery approaches full charge, the charging current needs to be reduced to avoid overcharging. This is known as the constant - current/constant - voltage (CC/CV) charging method, which is ...





Contact Us

For catalog requests, pricing, or partnerships, please visit:

<https://iwap.com.pl>

Phone: +34 919 456 782

Email: info@iwap.com.pl

Scan the QR code to access our WhatsApp.

