



How many watts of solar energy can generate per square meter





How many watts of solar energy can generate per square meter

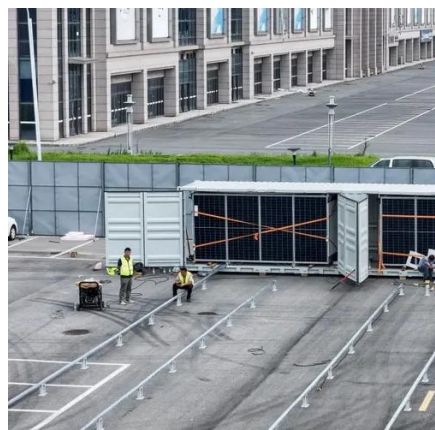


Watts Per Square Meter Solar Panel

On a clear day with high solar irradiance, a square meter of efficient solar panels can generate around 150-250 watt-hours (Wh) of energy in an hour. It translates to approximately 1.5-2.5 ...

Solar Panels Watts per Square Meter

So, when we say "watts per square meter," we are essentially measuring how much power a solar panel can produce relative to its physical size. This metric, watts per square meter, ...



[Solar Energy Generation Per Square Metre: A Complete Guide](#)

On a clear day, each square metre of the Earth's surface receives approximately 1,000 watts of solar energy, also known as 1 kW/m². This energy can be converted into electricity using ...

[Solar Energy Per Square Meter: How Much Power Can You Get?](#)

This article explores solar energy per square meter and the various factors that influence energy output, such as location, climate, and panel efficiency. It provides crucial calculations, ...



Solar Panel Output Per Square Meter

Discover how much electricity solar panels generate per square meter, explore efficiency factors, technology comparisons, and future innovations in photovoltaic energy.



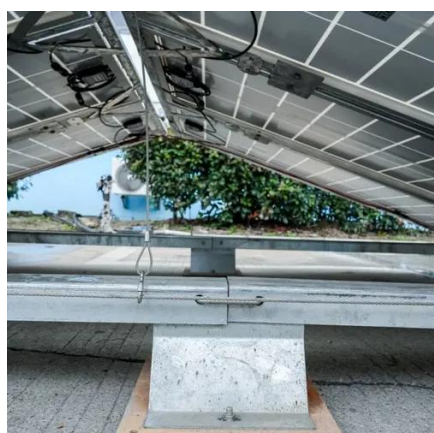
Solar Power per Square Meter Calculator

So, when we say "watts per square meter," we are essentially measuring how much power a solar panel can produce relative to its physical ...



[Solar Panel Watts Per Square Meter Explained](#)

Learn how to measure solar panel efficiency using solar panel watts per square meter with this comprehensive guide.



[How many watts can one square meter of solar energy produce?](#)



One square meter of solar energy can generate approximately 150 to 200 watts under ideal conditions, conditions that include optimal positioning relative to the sun, high-quality solar ...



Solar Power per Square Meter Calculator

As per the recent measurements done by NASA, the average intensity of solar energy that reaches the top atmosphere is about 1,360 watts per square meter. You can calculate the solar ...

Solar Power Per Square Meter Calculator

A typical solar panel produces 150-250 watts per square meter under standard test conditions (1,000 W/m² irradiance, 25°C). In real-world conditions, expect 120-200W/m² during peak sun hours.



Power Per Square Meter Calculator

Solar Energy Potential: On average, Earth's surface receives about 1,000 watts of solar power per square meter under direct sunlight. Wind Turbines: Modern wind turbines can produce up ...



Contact Us

For catalog requests, pricing, or partnerships, please visit:

<https://iwap.com.pl>

Phone: +34 919 456 782

Email: info@iwap.com.pl

Scan the QR code to access our WhatsApp.

