



# How many square meters is one megawatt of solar power





## Overview

---

Accordingly, to set up solar panels of 1 megawatt, you need over 6000 square meters of land. The efficiency of solar panels varies, with some panels converting a higher percentage of sunlight into. A Megawatt (MW) is a unit of power equal to one million watts (1,000,000 watts). It is commonly used to measure the power output of large power plants, wind turbines, solar farms, and other large-scale power generation equipment. The area covered by one megawatt solar panel typically ranges from 4,000 to 5,000 square meters, particularly depending on the efficiency and technology of the solar panels utilized; 2. Different panel technologies, such as monocrystalline and. So, how many square meters does 1MW of solar power need to maximize its energy?

This article will help you answer the above question through detailed instructions on how to calculate the installation area, as well as factors to consider when deploying a solar power system. A simple rule of thumb is to take 100 sqft for every 1kW of solar panels.



## How many square meters is one megawatt of solar power



### [What is Megawatt and how many homes can it power?](#)

1 Megawatt solar farm typically covers about 4 to 5 acres (approximately 16,000 to 20,000 square meters). This area depends on the panel efficiency, layout, and other site-specific factors.

### [How many square meters are 1 megawatt photovoltaic panels](#)

If you are seeking to find out how many solar panels you need to produce 1 MW of power on the DC side of things, this is a much more simple calculation. Simply divide one million watts by the wattage of ...



### [Understanding the Size of a 1 Megawatt Solar Farm and Other Solar](#)

Typically, a 1-megawatt solar farm occupies a space of 5 acres or less. Depending on the efficiency of the panels and how much sunlight the region receives, it may have around 4,000 solar panels.

### [How Many Solar Panels Needed For 1 MW POWER \(Updated\)](#)

Here You Will Learn How Many Solar Panels Are Needed For 1 MW. Accordingly, to set up solar panels of 1 megawatt, you need over 6000 square meters of land.



### Area Required for Solar PV Power Plants

A simple rule of thumb is to take 100 sqft for every 1kW of solar panels. Extrapolating this, a 1 MW solar PV power plant should require about 100000 sqft (about 2.5 acres, or 1 hectare).

### [How Many Square Meters of Solar Panels Are Needed for 1 ...](#)

Determining how many square meters of solar panels are needed for 1 megawatt requires analyzing efficiency, location, and technology. While 5,000 m<sup>2</sup> is a common benchmark, advancements in solar ...



### [How many sets of solar power can generate 1mw](#)

Let's explore the key determining factors for a 1 MW solar power system: How many square meters does a 1MW Solar System need? On average, a 1kW solar system requires a shade-free area of 6 square ...



### [How many square meters are needed for 1MW of solar power? A ...](#)



So, how many square meters does 1MW of solar power need to maximize its energy? This article will help you answer the above question through detailed instructions on how to calculate ...

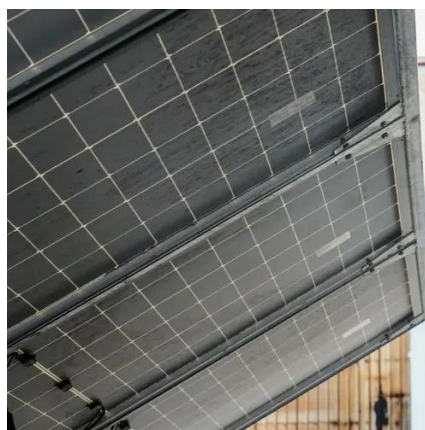


### [How many square meters is one megawatt solar panel?](#)

The area required for a megawatt solar installation can significantly vary based on the type and efficiency of solar panels used. Generally, between 4,000 and 5,000 square meters is ...

### **Solar Panel Output Per Square Meter**

Discover how much electricity solar panels generate per square meter, explore efficiency factors, technology comparisons, and future innovations in photovoltaic energy.





## Contact Us

---

For catalog requests, pricing, or partnerships, please visit:

<https://iwap.com.pl>

Phone: +34 919 456 782

Email: [info@iwap.com.pl](mailto:info@iwap.com.pl)

Scan the QR code to access our WhatsApp.

