



# How many inverters are there for communication base stations in Chile





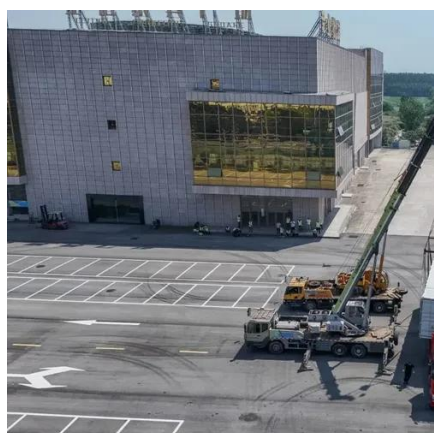
## Overview

---

Ingeteam has supplied 70 PV inverters for a photovoltaic project that is being constructed in Chile, owned by Global Power Generation (GPG), the international power generation subsidiary of the Naturgy group. This work was authored, in part, by the National Renewable Energy Laboratory (NREL), operated by Alliance for Sustainable Energy, LLC, for the U. Department of Energy (DOE) under Contract No. Funded by the DOE and overseen by the DOE Office of International Affairs (IA) Office. In communication base stations, since they usually rely on DC power, such as batteries or solar panels, while most communication equipment and other electronic equipment require AC power to operate properly, inverters are almost a necessity. The following are some specific applications of inverters.



## How many inverters are there for communication base stations in Chi

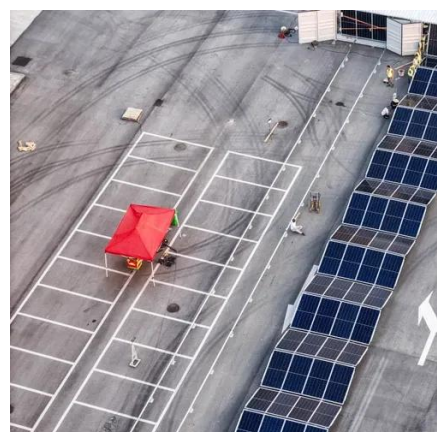


### [Communication Base Station Inverter Application](#)

The power requirements of inverters for communication base stations vary depending on the size of the site, equipment requirements and usage environment. Different base stations have ...

### [Building communication base stations and inverters in rural areas](#)

Telecom Towers and Remote Base Stations  
Discover comprehensive insights into powering telecom towers and remote base stations with off-grid solar and energy storage solutions.



### [Hybrid energy for communication base stations in Chile](#)

The objective of this paper is to present a hybrid control strategy for communication base stations that considers both the communication load and time-sharing tariffs.

### [Review of Technical Requirements for Inverter-Based Resources in ...](#)

In light of the findings of the aforementioned comparative review, this document proposes and describes the requirements for conventional IBRs that could be incorporated and updated into the Chilean grid ...



### [Review of Technical Requirements for Inverter-Based Resources ...](#)

Inverter-Based Resource continuous rating (ICR):  
The continuous rating of an IBR is the amount of power that it is capable of handling for an indefinite period of time.

### **Ingeteam inverter station Chile**

For this project, Ingeteam has supplied 70 of its PV central inverters with 1500V technology and a rated power of 1690kW, housed in 18 Inverter Stations fitted with all the equipment ...



### **How many communication base station inverters are connected to the ...**

In communication base stations, since they usually rely on DC power, such as batteries or solar panels, while most communication equipment and other electronic equipment require AC power to operate ...

### **Review of Technical Requirements for Inverter-Based Resources in Chile**



This report, developed by the National Renewable Energy Laboratory (NREL) through the Global Power System Transformation (G-PST) Consortium, in collaboration with Coordinador Eléctrico Nacional ...



### [Coordinador publica recomendación de requisitos técnicos para ...](#)

Los inversores son una tecnología que funciona en plantas renovables, como las solares y eólicas, y sistemas de almacenamiento, permitiendo transformar y adaptar la corriente continua que generan ...



## Contact Us

---

For catalog requests, pricing, or partnerships, please visit:

<https://iwap.com.pl>

Phone: +34 919 456 782

Email: [info@iwap.com.pl](mailto:info@iwap.com.pl)

Scan the QR code to access our WhatsApp.

