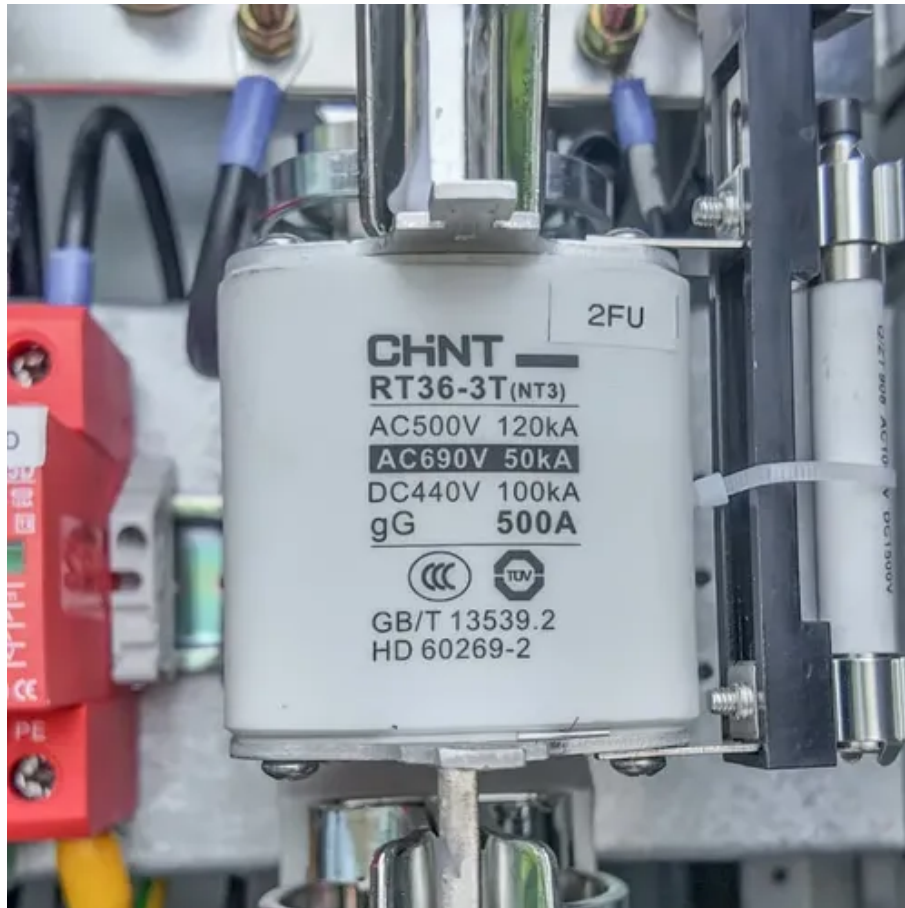




# How long and wide are solar panels generally





## Overview

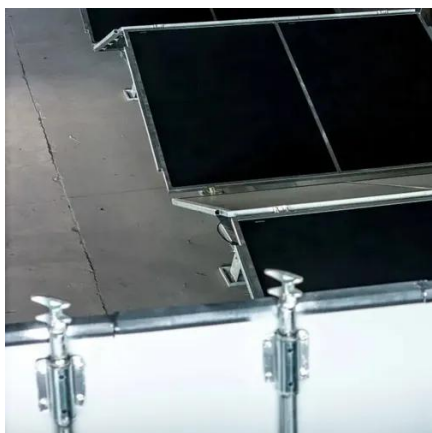
---

The standard residential solar photovoltaic panel size you'll see most often is based on a 60-cell configuration, typically measuring about 67 inches long by 40 inches wide. This size offers the best balance between power output, handling ease, and fitting standard roof dimensions. That's roughly the size of a large coffee table or a very assertive flat-screen TV. For commercial setups, you're usually looking. How long and wide is the solar panel?

1. DIMENSIONS OF SOLAR PANELS Typically, solar panels measure about 1. However, dimensions may vary based on technology and manufacturer specifics.



## How long and wide are solar panels generally



### [Solar Panel Size Matters: How Dimensions Impact Your Home's ...](#)

Today's standard residential solar panels typically measure between 65 to 71 inches long and 39 to 41 inches wide, dimensions carefully engineered to balance power generation with ...

### [What Is the Average Size of a Solar Panel? Quick Guide](#)

Most standard solar panels are around 65 by 40 inches. That's just under 18 square feet per panel.



### [Understanding Solar Panels Dimensions: A Guide to Choosing the ...](#)

Residential solar panels sizes typically measure around 65 inches x 39 inches (5.4 ft x 3.25 ft) and have 60 solar cells, making them ideal for home rooftops.

### [Solar Panel Sizes: What Size Do You Actually Need? \[2025 Guide\]](#)

Most residential solar installations use 60-cell panels, which typically measure about 65 inches long by 39 inches wide (approximately 5.5 feet by 3.25 feet). These panels generally weigh ...

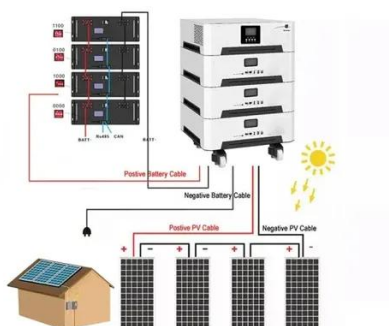


### [What Size Are Solar Panels? A Comprehensive Guide to Dimensions ...](#)

When asking what size are solar panels, it's typical for residential energy modules to measure around 65 inches by 39 inches, with efficiency ratings ranging from 15% to 22%, depending ...

### [standard solar photovoltaic panel sizes explained](#)

The standard residential solar photovoltaic panel size you'll see most often is based on a 60-cell configuration, typically measuring about 67 inches long by 40 inches wide. This size offers the ...



### **How long and wide is the solar panel?**

Typically, solar panels measure about 1.65 meters by 1 meter, which translates to an area of around 1.7 square meters. However, dimensions may vary based on technology and manufacturer ...

### **What Are The Dimensions of Solar Panels?**



Residential solar panels are the most common type used in home solar systems. These panels typically measure around 5.5 feet by 3 feet, with a weight ranging from 40 to 50 pounds. The ...



### [How Big Are Solar Panels? Typical Dimensions Explained](#)



Most modern residential panels, often referred to as 60-cell modules, measure approximately 5.5 feet long by 3.25 feet wide (66 inches by 39 inches or 1.68 meters by 0.99 meters).

### [Solar Panel Size & Dimensions Guide 2025 . Complete Specs](#)

A standard residential solar panel measures 65-66 inches long by 39-40 inches wide by 1.5-2.0 inches thick, covering approximately 17.5-18.3 square feet. These 60-cell panels weigh 40-46 ...





## Contact Us

---

For catalog requests, pricing, or partnerships, please visit:

<https://iwap.com.pl>

Phone: +34 919 456 782

Email: [info@iwap.com.pl](mailto:info@iwap.com.pl)

Scan the QR code to access our WhatsApp.

