



How big is the power station generator



Deye inverters and Deye batteries are more compatible.





Overview

Calculate the required size of a portable power station based on your power needs. With capacities ranging from 200Wh to over 5000Wh and power outputs from 300W to 4000W, the choices can be overwhelming. Before diving into sizing, it's crucial to understand two key measurements that every. Running watts refers to the amount of power, total watts, a generator can consistently supply to keep your devices or appliances running. If your product only shows Amps, use this. But what size generator do you need?

To figure this out, you need to add up the wattage of all the appliances you want it to power simultaneously, plus the highest-powered item you want to be able to use in addition to these. Enter your device usage and backup duration to find the perfect power station for camping, travel, or emergencies.



How big is the power station generator



[What Size Generator Do I Need? \(With Easy To Use Calculator\)](#)

To figure this out, you need to add up the wattage of all the appliances you want it to power simultaneously, plus the highest-powered item you want to be able to use in addition to these.

[What Size Portable Power Station Do I Need? February 2026 Guide](#)

Most people need a 500-1000 watt-hour unit for camping and small emergencies, while home backup typically requires 1500-3000 watt-hours or more. Let me walk you through exactly how ...



[What Size Generator Do I Need? \(With Easy To Use Calculator\)](#)

Generators provide power to spaces and devices during blackouts or in areas where standard electrical service isn't ...

Generator Sizing Buying Guide

Follow these four simple steps to effectively size a portable generator. Choose and list essential devices that you want to be able to power concurrently. Check the manual or data plates of ...



Generator Sizing Guide

Find the perfect generator size for your needs with our step-by-step comprehensive guide. Be prepared for power outages or your next outdoor adventure.



[What Size Solar Generator Do I Need? For House, Camping](#)

Keep reading to learn how to calculate the right power station size, along with other information about solar generators, so that you make the best choice. The right solar generator size depends on the ...



[What Size Portable Power Station Do I Need? W/Wh Calculator & Guide](#)

Stop guessing the size! Use our free calculator to determine the exact Watts (W) and Battery Capacity (Wh) you need for your portable power station or solar generator. Perfect for camping, RVs, and ...

Portable Power Station Size Calculator



This Portable Power Station Size Calculator is a simple yet powerful tool that helps you determine the ideal power station capacity.

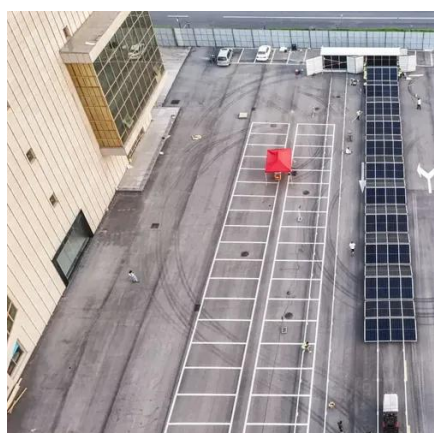


Portable Power Station Size Calculator

Calculate the required size of a portable power station based on your power needs. Enter your device usage and backup duration to find the perfect power station for camping, travel, or emergencies.

Choosing the Right Size Generator

Generators provide power to spaces and devices during blackouts or in areas where standard electrical service isn't available. Generators range from 800 watts to over 500,000 watts, ...



How to Size a Portable Power Station

Portable power stations run the gamut in size and output, from models the size of a lunch box that charge laptops and smartphones to large, 100-pound monsters that can power an entire RV ...



Contact Us

For catalog requests, pricing, or partnerships, please visit:

<https://iwap.com.pl>

Phone: +34 919 456 782

Email: info@iwap.com.pl

Scan the QR code to access our WhatsApp.

