



# How big is the maximum square meter of photovoltaic panel



GEL Battery



Lithium Battery



Container storage system



Power Battery





## Overview

---

Solar cell dimensions are typically around 189 x 100 x 3. Can you put a 5kW solar system on your roof?

For that, you will need to know what size is a typical 100-watt solar panel, right?

To bridge that gap of very useful knowledge needed, we have compared and averaged the sizes of 100-watt to 500-watt solar. Roof Load Capacity is Rarely a Limiting Factor: Solar panels add only 3-4 pounds per square foot to roof load, well within the 20+ pound capacity of most residential roofs. The real constraints are typically usable roof space after accounting for required 3-foot setbacks and obstruction clearances. Solar panel sizes and wattage range from 250W to 450W, taking up 1.6 to 2 square metres per panel. 9 inches and a width range of 39 to 51. Lower wattage panels tend to be on the smaller end of these ranges, while higher wattage panels tend to be larger.



## How big is the maximum square meter of photovoltaic panel



### [How many square meters is a photovoltaic solar panel?](#)

Larger, commercial solar panels can extend up to 2.5 square meters, facilitating greater power production. This size enables them to cater to more expansive spaces, maximizing energy ...

### [How Many Square Meters Are Photovoltaic Panels? A...](#)

Ever wondered how much roof space you'd need to become your own power plant? Let's break down the spatial requirements of solar panels. A standard 320W photovoltaic panel measures about ...



### [We Analyzed 100 Solar Panels: Dimensions, Efficiency, & Load](#)

Solar panel width generally varies between 39.0 inches and 51.3 inches. A common width range of 39.1 to 41.5 inches encompasses many models across different wattages. Wider panels, such as those ...

### [Average dimensions of photovoltaic panels](#)

Generally speaking, the length of residential solar panels is between 65 inches (1.65 meters) and 79 inches (2 meters). Their width is between 39 and 41 inches (around 1 meter). The ...



### [Standard Solar Panel Sizes And Wattages \(100W-500W Dimensions\)](#)

If you want to calculate how many solar panels you can put on your roof, you will obviously need to know the size of a solar panel. Example: 5kW solar system is comprised of 50 100-watt solar panels. ...



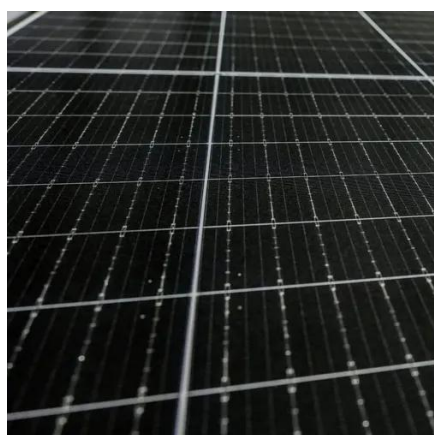
### [Guide to Solar Panel Sizes & Dimensions \(October 2025\)](#)

Solar panel sizes and wattage range from 250W to 450W, taking up 1.6 to 2 square metres per panel. One of the most important things to consider when getting solar panels for your ...



### [standard solar photovoltaic panel sizes explained](#)

Residential solar photovoltaic panel sizes typically adhere to a standard 60-cell format, resulting in dimensions around 65 inches by 39 inches (or approximately 1.65 meters by 1 meter).



### [Solar Panel Size & Dimensions Guide 2025 . Complete Specs](#)



In this comprehensive guide, you'll learn everything you need to know about solar panel sizing, from standard dimensions to weight considerations, helping you determine the perfect solar ...



### [How many square meters are photovoltaic solar panels?](#)

A typical solar panel measures about 1.6 to 1.7 square meters, depending on the manufacturer and efficiency design. Most panels are rectangular, which allows for efficient ...

### [How Many Square Meters Is One Solar Panel?](#)

This article will delve into the average size of a solar panel in square meters. We will explore the standard dimensions, the typical energy output associated with these sizes, and how ...





## Contact Us

---

For catalog requests, pricing, or partnerships, please visit:

<https://iwap.com.pl>

Phone: +34 919 456 782

Email: [info@iwap.com.pl](mailto:info@iwap.com.pl)

Scan the QR code to access our WhatsApp.

