



# How big an inverter should I use for a 26kW generator





## Overview

---

The size of inverter generator you need depends on your appliance list, starting watt requirements, and use case. Most campers are well served by 2000–2400W, RV owners typically choose 3500–4500W, and homeowners often prefer 4000–6500W. Choosing the correct generator size is the most important decision when buying an inverter generator. This guide offers a practical framework to answer the question: What size inverter generator do I. Solar generators range in size from small generators for short camping trips to large off-grid power systems for a boat or house. Consequently, inverter sizes vary greatly. To begin the process of selecting the right.



## How big an inverter should I use for a 26kW generator



### [The Only Inverter Size Chart You'll Ever Need](#)

Depending on the size generator you need, you may have a choice between a traditional portable generator and an inverter generator, which ...

### [What Size Inverter Generator Do I Need - 101 Generator](#)

It's recommended to choose an inverter generator with a capacity about 10-20% higher than your total calculated wattage to provide a safety margin and improve generator longevity.



### [What Size Inverter Do I Need? A Comprehensive Guide to Inverter ...](#)

Proper inverter sizing affects energy efficiency, system longevity, and whether your inverter works well with your battery setup. This inverter sizing guide will take you through the ...



### [What Size Generator Do I Need For My House \(Chart Added\)](#)

This guide shows you exactly how to calculate your power needs, pick the perfect size, and avoid expensive mistakes. Take a few minutes to read through so you get it right the first time.



## What Size Inverter Do I Need?

Finding the proper inverter size for your needs is as simple as adding together the necessary wattages of the items that you're looking to power.

### [What Size Inverter Do You Need? A Complete Guide for Home, RV](#)

Choosing the right inverter size is crucial--too small, and your appliances won't work; too large, and you'll waste money. This guide will help you determine the ideal inverter size for your ...



### [The Only Inverter Size Chart You'll Ever Need](#)

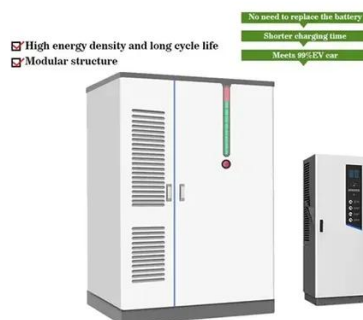
We have created a comprehensive inverter size chart to help you select the correct inverter to power your appliances.



### [What Size Inverter Generator Do You Need? Wattage and Power ...](#)



Learn how to choose the right inverter generator size for camping, RVs, and home backup. Includes appliance wattage charts and step-by-step sizing guide.

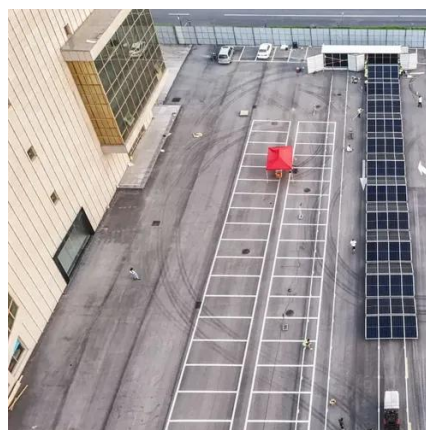


### Choose the Right Size Generator

Depending on the size generator you need, you may have a choice between a traditional portable generator and an inverter generator, which electronically throttles the engine up and down to

### [What Size Generator to Run a House \(with Chart\) Renogy US](#)

Below is an estimated list of solar generator sizes relative to the average type of dwelling: Small Houses/Apartments (1,500 - 3,000 Watts): Ideal for running a few basics like a refrigerator, some ...



### [Choosing The Right Size Inverter Generator For Your ...](#)

By referencing this sizing guide and calculating your total wattage requirements, you can select the appropriate size inverter generator for your specific needs.



## Contact Us

---

For catalog requests, pricing, or partnerships, please visit:

<https://iwap.com.pl>

Phone: +34 919 456 782

Email: [info@iwap.com.pl](mailto:info@iwap.com.pl)

Scan the QR code to access our WhatsApp.

