



# Horizontal energy storage water chiller container size





## Overview

---

Cylindrical tanks come in sizes as small as six feet in diameter, enabling them to be located in congested building spaces. Steel and concrete are the most commonly used types of tanks for chilled-water. Thermal Energy Storage (TES) for chilled water systems can be found in commercial buildings, industrial facilities and in central energy plants that typically serve multiple buildings such as college campuses or medical centers (Fig 1 below). are used (when the demand for these energies is low) to either heat. Chilled-water storage systems use the sensible heat capacity of water—1 Btu per pound (lb) per degree Fahrenheit (F)—to store cooling capacity. They operate at temperature ranges compatible with standard chiller systems and are most economical for systems greater than 2,000 ton-hours in capacity. By. There has been a significant amount of interest in volume required for proper operation of chilled water systems. The following is a spreadsheet that will help in calculating system volume.



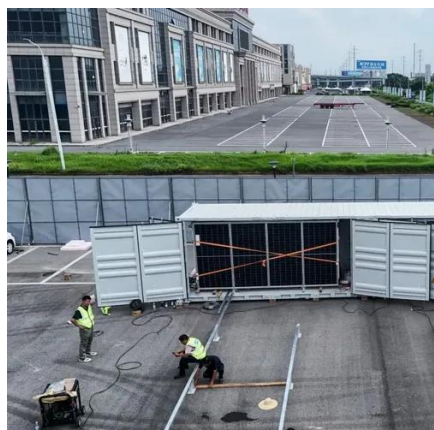
## Horizontal energy storage water chiller container size



### THERMAL ICE STORAGE:

Thermal ice storage is a proven technology that reduces chiller size and shifts compressor energy, condenser fan and pump energies, from peak periods, when energy costs are high, to non-peak

...



### Chilled Water Buffer Tanks

We offer all our standard sizes in both a vertical and horizontal tank, and all sizes are also available with protective jacketing or UV protectant coating and insulation options: spray foam, foil ...

[Commercial & Industrial HVAC , Shreveport, LA , Mechanical ...](#)

On the second sheet, various storage tank sizes are listed with their associated dimensions and weights. The items in RED are the parameters that need input. Sometimes a simple spreadsheet can remind ...

**Outdoor Cabinet BESS**  
50 kWh/500 kWh Battery Storage System  
Industrial and Commercial Energy Storage

- All In One**  
Integrating battery packs
- High-capacity**  
50-500kWh
- Degree of Protection**  
IP54
- Operating Temperature Range**  
-20-60°C (Derating above 50 °C)
- Intelligent Integration**  
integrated photovoltaic storage cabinet
- Rated AC Power**  
50-100kW
- Altitude**  
3000m(>3000m derating)

[A Technical Introduction to Cool Thermal Energy Storage ...](#)

Figure 1 represents a theoretical cooling load of 100 tons maintained for 10 hours, or a 1000 ton-hour cooling load. Each of the 100 squares in the diagram represents 10 ton-hours. Realistically, no

...



### Thermal Energy Storage for Chilled Water Systems

A mixture of 20-30% ethylene glycol and water is commonly used in TES chilled water systems to reduce the freezing point of the circulating chilled water and allow for ice production in the ...



### **HORIZONTAL ENERGY STORAGE WATER CHILLER**

What is chilled water storage (CWS)? Chilled water storage (CWS) is one of the most popular and simple thermal energy storage forms, using insulated water tanks to store chilled water that is ...



### **Thermal Energy Storage**

Hot water storage tanks can be sized for nearly any application. As with chilled water storage, water can be heated and stored during periods of low thermal demand and then used during periods of high ...



### **HVAC: Cool Thermal Storage**



The storage medium determines how large the storage tank will be and the size and configuration of the HVAC system and components. The options include chilled water, ice, and eutectic salts (see Table ...



### Horizontal energy storage water chiller container

In a stratified chilled-water storage tank, warm and cold water are stored in the same vessel with no Battery Energy Storage System (BESS) containers are increasingly being used to store renewable ...



### **Thermal Storage Tank , ARANER**

This is our most popular type of Thermal Energy Storage System. In a naturally stratified chilled-water storage tank, cold and warm volumes of water are stored together without a physical barrier.





## Contact Us

---

For catalog requests, pricing, or partnerships, please visit:

<https://iwap.com.pl>

Phone: +34 919 456 782

Email: [info@iwap.com.pl](mailto:info@iwap.com.pl)

Scan the QR code to access our WhatsApp.

