

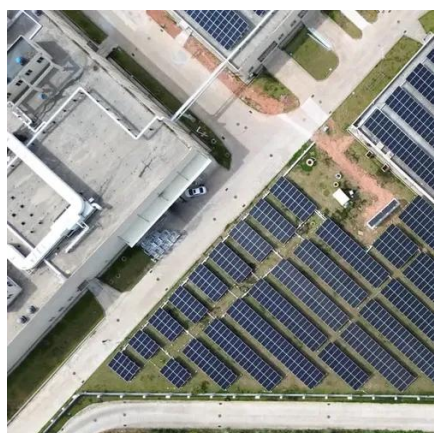


High voltage inverter maximum output current





High voltage inverter maximum output current



Inverter Specifications and Data Sheet

This is the maximum direct current that the inverter can utilize. If a solar array or wind turbine produces a current that exceeds this maximum input current, the excess current is not used by the inverter.



[Inverter Maximum Operating Input Current? Information by Electrical](#)

Others had the maximum input current the inverter could process listed but the array maximum output could be higher. Out of the box, these inverters could usually do at least a DC/AC

...

8. Technical Specifications

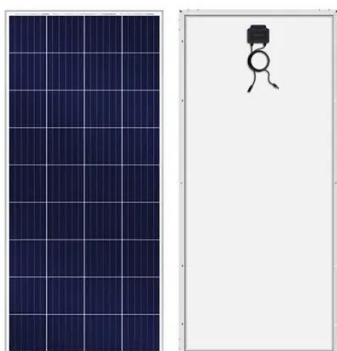
The maximum output current is reduced on a linear basis from full current at 60 V to 5A at 62 V. The equalization voltage can be set to max 62V, the equalization current percentage can be set to max ...



Inverter Specifications and Data Sheet

When sizing out a system, if you look at the specs on a lot of off-grid inverters, there will be a max Voltage, a max current and a max wattage. In strict math terms without factoring reality, one of

...



[Wattage vs Voltage vs Current on Inverter Ratings](#)

When sizing out a system, if you look at the specs on a lot of off-grid inverters, there will be a max Voltage, a max current and a max wattage. In strict math terms without factoring reality, one of ...

[Hybrid Inverters: Input vs. Charge Current Guide](#)

Understanding the difference between maximum solar input current and maximum solar charge current is critical for designing efficient, reliable solar systems. The input current limits your solar array size, ...



[Max Power Inverter Calculator . True Geometry's Blog](#)

Calculation Example: The maximum possible power output of an inverter is ideally the product of its DC input voltage and its output current. In reality, inverter efficiency will always be less ...

[How to Calculate the Maximum Output Power of a Power Inverter](#)



In this article, we go over how to calculate the maximum output power of a power inverter from the DC battery supplying it.



CSM_Inverter_TG_E_1_1

A function that automatically controls the output voltage by detecting an output current of an inverter to increase the torque when it is insufficient at low speeds.

Definitions of Inverter Specifications

The following guide provides definitions of the various inverter specifications on the Materials page.



Solar Inverter Specifications

The following specifications reflect Tesla Solar Inverter with Site Controller (Tesla P/N 1538000-45-y). For specifications on Tesla Solar Inverter without Site Controller, see Tesla Solar Inverter and Solar ...



Contact Us

For catalog requests, pricing, or partnerships, please visit:

<https://iwap.com.pl>

Phone: +34 919 456 782

Email: info@iwap.com.pl

Scan the QR code to access our WhatsApp.

