



# High-temperature resistant photovoltaic integrated energy storage cabinet for tunnels





## Overview

---

The Cabinet offers flexible installation, built-in safety systems, intelligent control, and efficient operation. It features robust lithium iron phosphate (LiFePO<sub>4</sub>) batteries with scalable capacities, supporting on-grid and off-grid configurations for reliable energy storage solutions. Supports. Enter the PV storage cabinet: a fully integrated enclosure that brings together lithium battery packs, hybrid inverters, energy management protocols, and safety systems into one scalable solution. When deployed correctly, these cabinets not only ensure energy availability—they shape how projects. Built-in fire, flood, and temperature control with system warnings for safety. Dual fire suppression, ATS/STS ensure seamless power switching. Integrated BMS/PCS/EMS supports diverse applications. With user-friendly operation and versatile applications, it's perfect for residential, commercial, and industrial.



## High-temperature resistant photovoltaic integrated energy storage cabinet

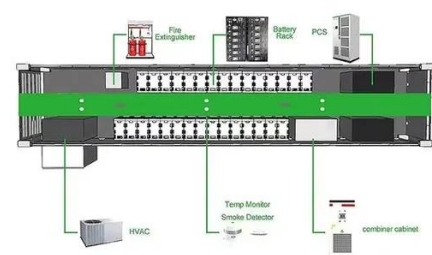


### [Thlinksolar PV Storage Cabinet for Industrial Solar Systems](#)

Enter the PV storage cabinet: a fully integrated enclosure that brings together lithium battery packs, hybrid inverters, energy management protocols, and safety systems into one scalable ...

### Indoor Photovoltaic Energy Cabinet

The Huijue Indoor Photovoltaic Energy Cabinet is a complete high-performance indoor energy storage solution for telecommunication, business, and industry.



### [15kW / 35kWh Hybrid Solar System Integrated Energy Storage Cabinet](#)

This fully integrated energy storage system features a comprehensive all-in-one design, incorporating essential switches for battery fuses, photovoltaic input, utility grid, load output, and diesel generators.

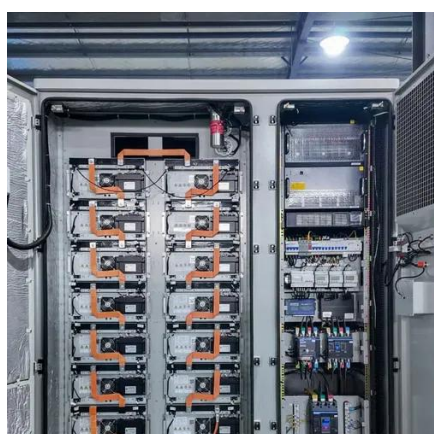
### [SNADI Integrated PV Energy Storage Cabinet](#)

Built-in fire, flood, and temperature control with system warnings for safety. Dual fire suppression, ATS/STS ensure seamless power switching. Integrated BMS/PCS/EMS supports diverse applications.



### [Indoor Photovoltaic Energy Cabinet, Base Station Energy Storage](#)

An indoor photovoltaic energy cabinet is a compact, integrated energy storage system designed to be deployed inside telecom facilities. It combines lithium battery storage, PV input, and intelligent ...



### **Integrated energy storage cabinets**

Integrated energy storage cabinets offer several key features, including multiple compartments for efficient organization of batteries and equipment, durable construction materials for long-term use, ...



### **All in one C& I Energy Storage Cabinet**

With user-friendly operation and versatile applications, it's perfect for residential, commercial, and industrial energy storage needs. Backed by JNTech's expertise, this system ensures reliable and ...



### **Integrated Energy Storage Cabinet**

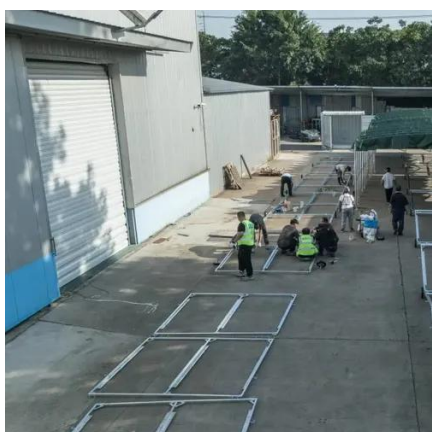


The Cabinet offers flexible installation, built-in safety systems, intelligent control, and efficient operation. It features robust lithium iron phosphate (LiFePO4) batteries with scalable capacities, supporting on ...



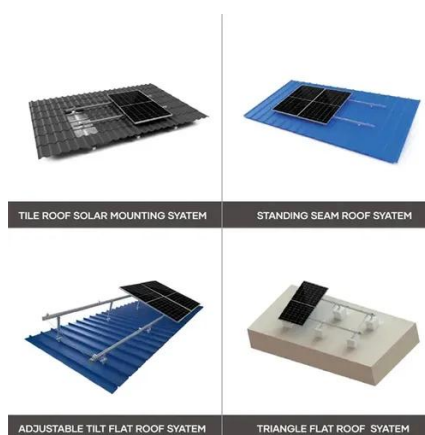
### Energy Storage Cabinet\_SOFAR

Safety designs such as water and electricity separation, three-level fire protection + explosion venting + exhaust, liquid cooling + dehumidification design, all ensure the safety of the energy storage ...



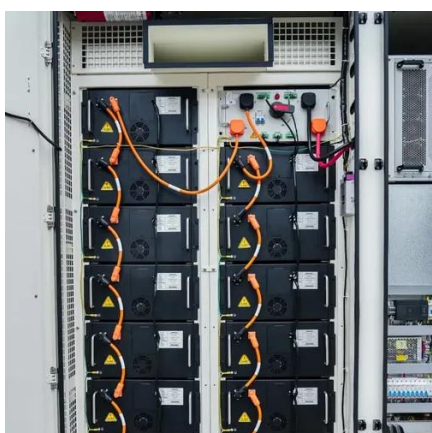
### Photovoltaic Energy Storage Cabinet

Integrated PV Energy Storage Cabinet solutions--modular, easy to deploy, certified to international standards, supporting on/off-grid and peak-shaving applications with global delivery and support.



### SNADI Integrated PV Energy Storage Cabinet

Built-in fire, flood, and temperature control with system warnings for safety. Dual ...





## Contact Us

---

For catalog requests, pricing, or partnerships, please visit:

<https://iwap.com.pl>

Phone: +34 919 456 782

Email: [info@iwap.com.pl](mailto:info@iwap.com.pl)

Scan the QR code to access our WhatsApp.

