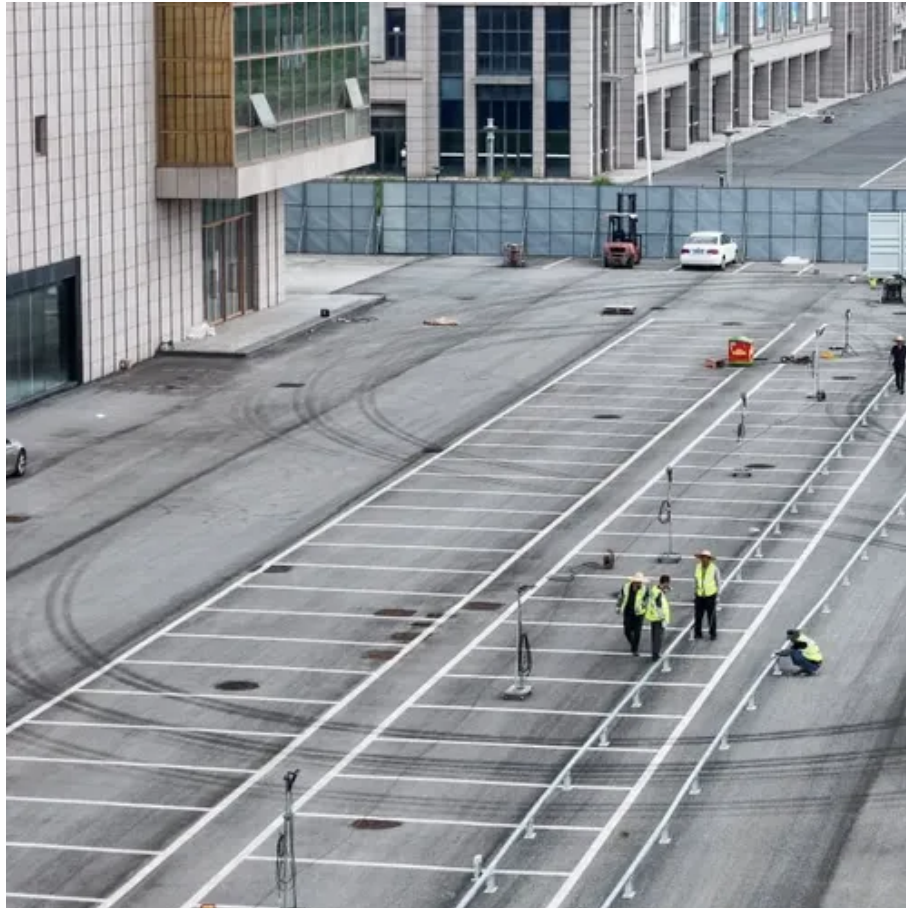




# Grid-connected inverter box





## Grid-connected inverter box

---



### [Grid-Connected Distribution Box for Solar Power Systems](#)

A Grid-Connected Distribution Box is an electrical enclosure that houses and protects solar photovoltaic (PV) system components, such as inverters, combiners, and disconnect switches. It is an essential ...

### **PV Grid-connected Combiner Box**

The photovoltaic grid-connected junction box combines the DC inputs of up to 24 photovoltaic cell components in series into one or multiple outputs, with each output equipped with fuses, lightning ...

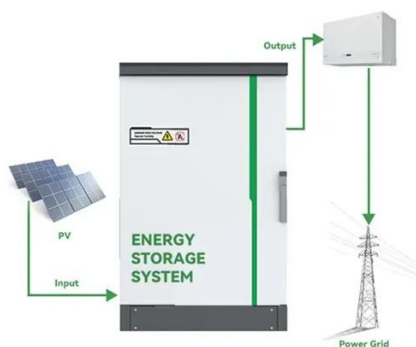


### **Grid Connect Box**

Connect and protect inverter and grid. Integrate switch components and meters.

### **EG4 GridBOSS**

The GridBOSS serves as a centralized connection point for utility power, up to three 90A hybrid inverters, four programmable smart/AC-couple ports, and a generator (up to 125 Amps).



### [Grid-Connected Solar Photovoltaic \(PV\) System](#)

A grid-tied solar system has a special inverter that can receive power from the grid or send grid-quality AC power to the utility grid when there is an excess of energy from the solar system.

### [Best Solar Grid-Connected Inverter Solutions for Home and Small ...](#)

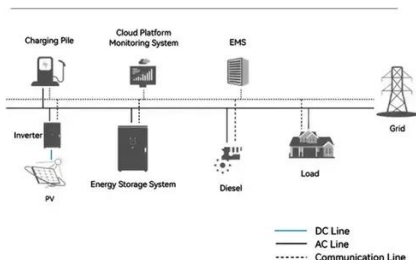
Choosing a solar grid-connected inverter involves balancing power needs, efficiency, and monitoring capabilities. This guide highlights five solid options suited for American households ...



### [Solar Integration: Inverters and Grid Services Basics](#)

As more solar systems are added to the grid, more inverters are being connected to the grid than ever before. Inverter-based generation can produce energy at any frequency and does not have the same ...

#### **System Topology**



### [Best Inverter Boxes for Solar Panels: Top Picks for Off-Grid Power](#)



Choosing the right inverter box is essential for safe, efficient solar power systems. This article highlights five strong options that pair well with common solar setups, from large-capacity ...



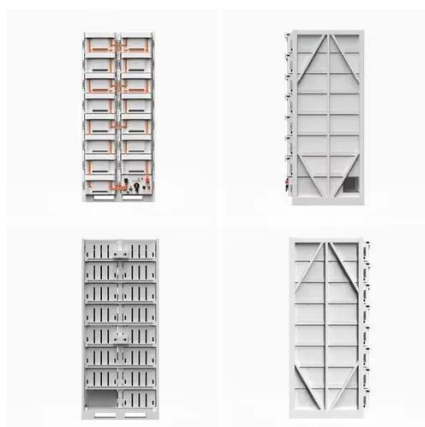
### **PV Grid Connected Combiner Box**

Photovoltaic grid connected boxes (cabinets) are mainly used for household photovoltaic distributed grid connected power generation system, small industrial and commercial photovoltaic power generation ...



### **SHLX-grid-connected box,Solar combiner**

The protection level of SHLX-grid-connected box is IP65 and has short-circuit, over-voltage, and under-voltage protection can be automatically closed to start surge protection and directly enter the box ...





## Contact Us

---

For catalog requests, pricing, or partnerships, please visit:

<https://iwap.com.pl>

Phone: +34 919 456 782

Email: [info@iwap.com.pl](mailto:info@iwap.com.pl)

Scan the QR code to access our WhatsApp.

