



Gf-8225 inverter operating voltage





Overview

Page 15 2000 A 1400 rated product □□ Assumes the use of a Mitsubishi Electric 4-pole standard motor with the power supply voltage of 400 VAC 50 Hz. Install one MCCB per converter. This Instruction Manual describes handling and cautions about the hardware, such as installation and wiring, for the FR-A802 (separated converter type) that are different from the FR-A800. Information about the software, such as basic. 5. 7 Insulation resistance test using megger. This is the maximum power the inverter can supply to a load on a steady basis at a specified output voltage. The value is expressed in watts or kilowatts. 4K) to 04750(90K)(-GF) FR-A840-00023(0. 4K) to 03610(132K) High functionality and high performance Model FR-A800 TORISETSU SHOUSAI EIBUN Model code 1AJ006 1 CONTENTS Safety instructions. Download 2236 Mitsubishi Electric Inverter PDF manuals. Product Resources including Owner's Manuals, Spec Sheets, Quick Start Guides, Service Manuals, and Service Bulletins.



Gf-8225 inverter operating voltage



INVERTER FAMILY

The operating status immediately before the protective function is activated can be stored with the trace function, facilitating the trouble analysis at a separate location by using a USB memory device and ...

[Mitsubishi Electric Inverter User Manuals Download](#)

User manuals, Mitsubishi Electric Inverter Operating guides and Service manuals.



FR-A800 INSTRUCTION MANUAL (DETAILED)

INVERTER FR-A800INVERTER INSTRUCTION MANUAL (DETAILED) N HEAD OFFICE: TOKYO BUILDING 2-7-3, MARUNOUCHI, CHIYODA-KU, TOKYO 100-8310, JAPAN IB(NA)-0600503ENG ...

FR-A802-GF (SEPARATED CONVERTER TYPE)

...

This Instruction Manual describes handling and cautions about the hardware, such as installation and wiring, for the FR-A802 (separated converter type) that are different from the FR-A800.



Inverter Specifications and Data Sheet

INVERTER FR-A800 INVERTER INSTRUCTION MANUAL (DETAILED) N HEAD OFFICE: TOKYO BUILDING 2-7-3, MARUNOUCHI, CHIYODA-KU, TOKYO 100-8310, JAPAN IB(NA) ...



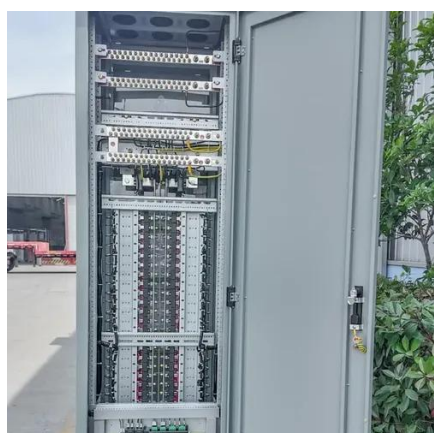
[Specifications for Grid-forming Inverter-based Resources](#)

For a disturbance within the normal operating range of voltage, on the shortest [sub-transient] timescales (roughly 0-5 cycles after a disturbance), a conventional (or legacy) GFL inverter's control



[Mitsubishi Electric FR-A820-01250-GF \(22K\) Manuals](#)

View online or download Mitsubishi electric FR-A820-01250-GF (22K) Instruction Manual.



[mitsubishi electric A800-GF INSTRUCTION MANUAL Pdf ...](#)



Before starting wiring or inspection, switch power off, wait for more than 10 minutes, and check for residual voltage between terminal P/+ and N/- with a meter etc., to avoid a hazard of electrical shock.



Inverter Specifications and Data Sheet

The article provides an overview of inverter functions, key specifications, and common features found in inverter systems, along with an example of power calculations and inverter classification by power ...

8220/8240 Inverter Operating Instructions

This document provides operating instructions for Global Drive 8220/8240 frequency inverters with power ranges from 0.37 to 90 kW. It contains information about safety, technical specifications, ...



Documents and Manuals

Product Resources including Owner's Manuals, Spec Sheets, Quick Start Guides, Service Manuals, and Service Bulletins.



Contact Us

For catalog requests, pricing, or partnerships, please visit:

<https://iwap.com.pl>

Phone: +34 919 456 782

Email: info@iwap.com.pl

Scan the QR code to access our WhatsApp.

