



German household lithium battery BMS characteristics





Overview

To prevent these limitations and consistently ensure the desired longevity of the energy storage unit even during long periods of non-use, a battery management system (BMS) with particularly energy-efficient, permanent and continuous storage monitoring has been developed at the. To prevent these limitations and consistently ensure the desired longevity of the energy storage unit even during long periods of non-use, a battery management system (BMS) with particularly energy-efficient, permanent and continuous storage monitoring has been developed at the. The UN 38.3 transport test, as described in the UN Manual of Tests and Criteria (MTC), section 38. These tests are essential to ensure that battery packs are insensitive to external influences such. A battery management system (BMS) consists of a battery monitor, microcontroller (MCU), and fuel gauge. The BMS ensures safe, reliable, and optimal operation by protecting the system and battery, and prolonging the system lifespan (see Figure 1). It monitors cells, protects against abuse, balances differences between cells, estimates state of charge/health, and communicates with the rest of the device or vehicle.



German household lithium battery BMS characteristics

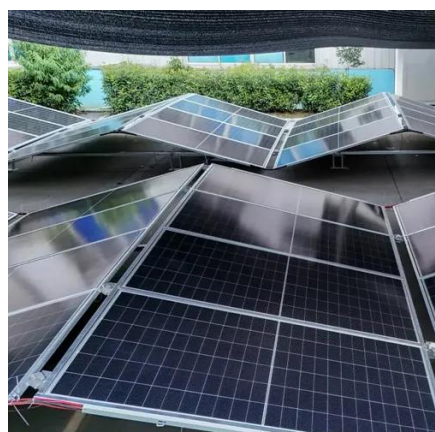


[BMS for lithium batteries: Optimized performance](#)

Key facts: A battery equipped with a high-performance BMS can last 20-30% longer. Lithium-ion batteries can be unstable if not properly managed. The BMS prevents incidents such as ...

FSM AG , Standards and approvals

The UN 38.3 transport test, as described in the UN Manual of Tests and Criteria (MTC), section 38.3, is an internationally recognized series of tests for lithium-based single cells and battery packs. These ...



[BMS for Lithium-Ion Battery: Essential Guide](#)

Monitors the Battery State: By keeping track of the battery's voltage, current, and temperature, the BMS ensures that the battery operates within safe limits. This monitoring prevents ...

[Battery management system \(BMS\) for energy-sensitive applications](#)

To prevent these limitations and consistently ensure the desired longevity of the energy storage unit even during long periods of non-use, a battery management system (BMS) with particularly energy ...



Battery-Management-Systems

A battery's state of health (SOH) is an abstract concept that attempts to reduce the complex phenomena of battery degradation to a simple metric indicating how far the battery has progressed from the ...

[How Battery Characteristics Impact Battery Management](#)

To utilize the battery pack's full capacity, the BMS monitors the key characteristics of the battery, such as SOC and state-of health (SOH). The accuracy of the BMS provides a direct tradeoff between the ...



[Standards and Regulations for Battery Management Systems in ...](#)

Battery management systems (BMS) are critical for battery performance and safety. This paper reviews current German standards, highlighting gaps in measurable requirements for key BMS functions like ...

[Battery Management Systems \(BMS\) in Lithium Batteries: Complete ...](#)



A Battery Management System (BMS) is the brain and safety layer of any lithium battery pack. It monitors cells, protects against abuse, balances differences between cells, estimates state of ...



[What is BMS on a Lithium Battery and Why Is It So Important](#)

It constantly measures key values such as voltage, current, temperature, and the overall condition of the individual battery cells. Put simply, the BMS keeps track of each cell, determines ...

[Standards and Regulations for Battery Management Systems in ...](#)

Considering rapid technological advancements in batteries, updating these requirements is essential to reflect growing system complexity. Therefore, this study reviews current standards and ...





Contact Us

For catalog requests, pricing, or partnerships, please visit:

<https://iwap.com.pl>

Phone: +34 919 456 782

Email: info@iwap.com.pl

Scan the QR code to access our WhatsApp.

