



Generator wind bag test specification standard





Overview

These Guidelines provide information on the Inspection and Testing procedures to be carried out by the eligible consumer at the end of the construction of a Wind System, in order to connect it to the Distribution Network in KSA. A generator is tested several times throughout its lifetime - after being manufactured, once installed onsite, during periodic maintenance checks, etc. Generator manufacturers, service / maintenance companies and those in the hydro power / wind power / mining / offshore industries use HAEFELY. Can be stated as an amount of voltage dip or rise that occurs for a given load. Can be specified as an amount of load (skVA) applied or removed with a given dip or rise, respectively. Can be specified with definition of the exact. The purpose of this Service Procedure is to provide a guide for testing generator insulation and determining its suitability for use and/or need for preventative maintenance. All procedures and recommendations are intended to be in accordance with IEEE 43 (Ref. These standards cover various aspects of generator design, testing, performance, and safety.



Generator wind bag test specification standard



Wind Inspection and Testing Guidelines

These Guidelines provide information on the Inspection and Testing procedures to be carried out by the eligible consumer at the end of the construction of a Wind System, in order to connect it to the Distribution Network ...

[Generator Testing Specifications , PDF , Electric Generator](#)

1) The document discusses tests that should be conducted on generator components like the stator and rotor during manufacturing to ensure quality and suitability for service.



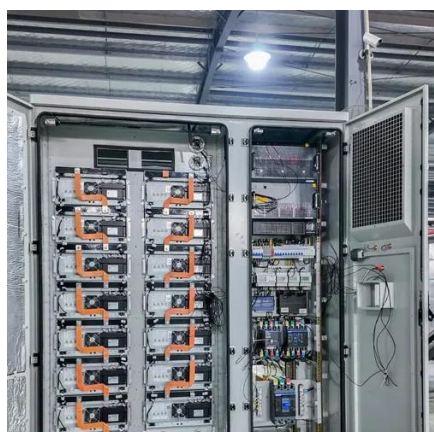
Microsoft PowerPoint

What is the starting method? Across-the-line, soft-start How many machines are in parallel? Is there any preload on the generator? If so, what type? Voltage transient performance data given assumes ...



IEC Standards For Generator

IEC 61400-22: Part of the IEC 61400 series on wind turbines, this standard focuses on "Conformity testing and certification" and includes requirements for the certification of wind turbine generators.



7. QUALITY OF POWER SINGLE GRID CONNECTED

Wind Energy Conversion System (WECS) ranging from: energy production, quality of power, reliability, durability and safety, through to cost effectiveness or economics, noise

GENERATOR TESTING

The test involves applying AC voltage to a winding to verify if it can withstand an applied voltage. This confirms the quality of a new generator, as well as validates the insulation condition after it's been installed.



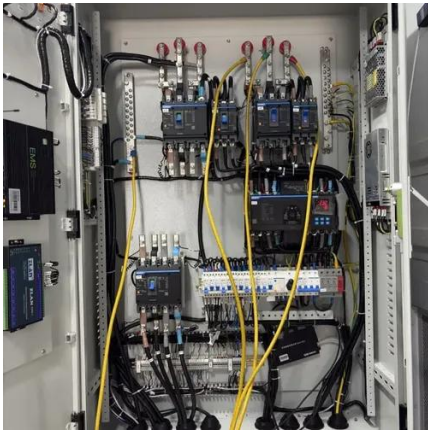
SP0002 Insulation Testing

The purpose of this Service Procedure is to provide a guide for testing generator insulation and determining its suitability for use and/or need for preventative maintenance.

BS EN 61400



Measurement and assessment of power quality characteristics of grid connected wind turbines. Part 22 Wind turbines. Conformity testing and certification. Part 23 Wind turbines. Full-scale structural testing of rotor ...



[Understanding IBC Wind Load Requirements FOR GENERATING ...](#)

PARAMETERS DETERMINE WIND LOADS for Buildings and Other Structures, an industry-wide standard. The first step is to calculate the wind velocity pressure at the structure, which is dependent on geography, local ...



Contact Us

For catalog requests, pricing, or partnerships, please visit:

<https://iwap.com.pl>

Phone: +34 919 456 782

Email: info@iwap.com.pl

Scan the QR code to access our WhatsApp.

