



Generator room exhaust or intake





Generator room exhaust or intake

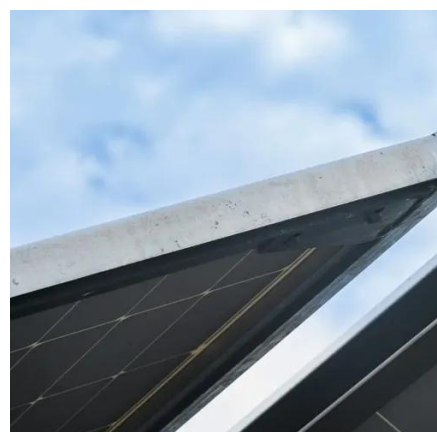


Generator room exhaust or intake

What is a generator room ventilation sheet? This sheet allows you to calculate important parameters of the diesel generator room ventilation; Appropriate ventilation of the generator room transformer room ...

Generator Room Ventilation Requirements

Generator type and fuel: The type of generator and its fuel, like natural gas, diesel, or others, produce different types of exhaust composition. It impacts the ventilation requirements.



[Examples of Airflows for Different Enclosed Generator ...](#)

DESIGNING ENCLOSURES FOR ENGINE DRIVEN GENERATOR SYSTEMS Manufacturers offer engine-driven generator systems, from a few kWs to several MWs, in open and ...

GENERIC GENERATOR INSTALLATION MANUAL

The air inlet must be capable of moving enough air through the room to provide the correct minimum CFM (cubic feet per minute) cooling for generator as specified by the generator's ...



[Generator Room Air Intake and Exhaust ...](#)

Learn how to calculate air intake and exhaust volumes in diesel generator rooms, including key parameters for air-cooled and water-cooled systems.



Generator Engine Room Ventilation

This article was originally written by Caterpillar
This article addresses engine room ventilation considerations that apply to the successful installation, operation and maintenance of ...



[Importance of Proper Ventilation in Generator Rooms ...](#)

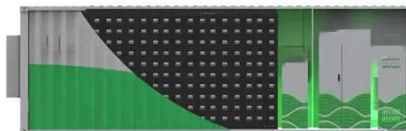
Importance of Proper Ventilation in Generator Rooms Proper ventilation is crucial for indoor generator rooms to ensure optimal performance and safety. Generators require sufficient ...



[Proper Ventilation for Generators: What You Need to Know](#)



Generators must be used in open, well-ventilated outdoor spaces to prevent carbon monoxide buildup. Never run a generator in a garage, shed, or near open windows. Keep it at least ...



[Design of Air Inlet and Exhaust Route in Diesel ...](#)

When designing the air intake and exhaust of diesel generator room, we should pay attention to the matters which mentions in this article.

[Design of air intake and exhaust in generator room](#)

For generators with remote radiators, it is recommended that the exhaust air should be sourced as high as possible and directly above the generator sets. Significant bypass of ventilation airflow directly into ...





Contact Us

For catalog requests, pricing, or partnerships, please visit:

<https://iwap.com.pl>

Phone: +34 919 456 782

Email: info@iwap.com.pl

Scan the QR code to access our WhatsApp.

