



Full set of photovoltaic support facility design





Overview

Guidance on designing and operating large-scale solar PV systems. Produced under direction of the Bureau of Reclamation by the National Renewable Energy Laboratory (NREL) under IAG-14-1950 and Task No WFGX. This report is available at no. Photovoltaic (PV) systems (or PV systems) convert sunlight into electricity using semiconductor materials. PV systems can be designed as. Design Development stage: The Architectural/Engineering Design Professional (A/E) is responsible for providing a DD level Roof Plan, showing available roof area (or other available space on select projects), to be used by solar firms in determining solar production targets. PV plant installations have increased rapidly, with around 1 terawatt (TW) of generating capacity installed as of 2022. With the continued growth of solar PV, and to. This book is dedicated to all engineers and experts who practice in the field of photovoltaic power plants and to our families: Naghaviha's parents; Mina, Kayhan, Nikan and Behrad Nikkhajoei; Karimi's family.



Full set of photovoltaic support facility design



[Photovoltaic module support and foundation design](#)

This paper analyses the state of the art of floating PV, describes the design of a floating PV platform and the development of a numerical model to evaluate the system performance in an ...

[Facility-Scale Solar Photovoltaic Guidebook: Bureau of ...](#)

Under that agreement, NREL was contracted to develop a facility-scale solar photovoltaic (PV) guidebook for Reclamation. This guidebook presents readers with the processes and steps needed ...



Solar PV Guidline

Provide guidance to designers and installers of our PV projects. It outlines the key attributes of, and expectations for, PV systems on APS projects. It is the District's intent to incorporate solar power ...



[Photovoltaic energy storage complete set of drawings](#)

A SPICE model of a complete photovoltaic system has been set up, including the photovoltaic modules, a modified cascaded multilevel inverter, and energy storage elements.

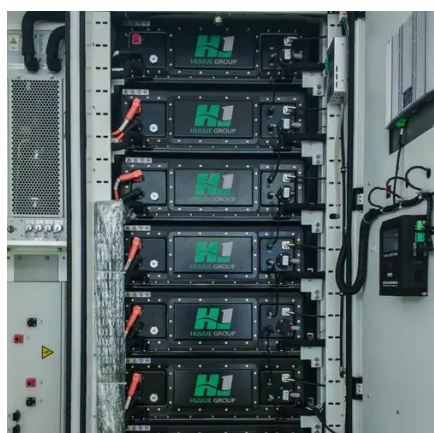


Microsoft Word

This Stand-alone PV System Design Tool an excel-based template that is intended to create initial designs of off-grid, stand-alone PV power systems for health care facilities, schools and other public ...

Design and Sizing of Solar Photovoltaic Systems

The map below shows the amount of solar energy in hours, available each day on an optimally tilted surface during the worst months of the year to generate electricity (based on accumulated worldwide ...



Solar Photovoltaic: SPECIFICATION, CHECKLIST AND GUIDE

About the Renewable Energy Ready Home Specifications Assumptions of the RERH Solar Photovoltaic Specification Builder and Specification Limitations
1.5 Document the solar resource potential at the designated array location
3.3 Install a conduit for the AC wire run from the designated inverter location to the electric service panel
4.2 Record the name and Web address of the electric utility service provider
5.1 Landscape Plan
5.2 Placement of non-array roof penetrations and structural building elements
Appendix A: RERH



Labeling Guidance The Renewable Energy Ready Home (RERH) specifications were developed by the U.S. Environmental Protection Agency (EPA) to assist builders in designing and constructing homes equipped with a set of features that make the installation of solar energy systems after the completion of the home's construction easier and less expensive. The specifications See more on energyst

Guidance on large-scale solar photovoltaic (PV) system ...

Guidance on designing and operating large-scale solar PV systems. Covers location, design, yield prediction, financing, construction, and maintenance.

[Guidance on large-scale solar photovoltaic \(PV\) system design](#)

Guidance on designing and operating large-scale solar PV systems. Covers location, design, yield prediction, financing, construction, and maintenance.



[A Guide to Large Photovoltaic Powerplant Design](#)

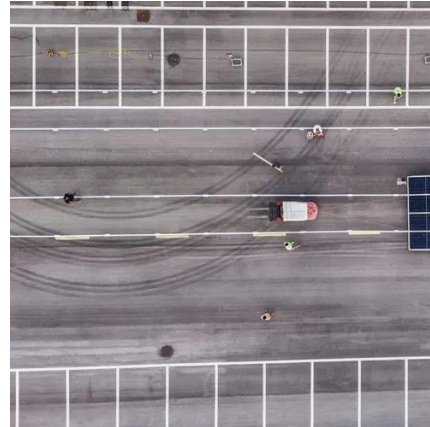
Our team of renewable energy engineers have the technical know-how and the experience necessary to design stellar photovoltaic power plants that strike the perfect balance between cost ...

[Step-by-Step Design of Large-Scale Photovoltaic Power Plants](#)

Numerous block diagrams, flow charts, and illustrations are presented to demonstrate how to do the feasibility study and detailed design of PV plants through a simple approach. This book



includes ...



[Solar Photovoltaic: SPECIFICATION, CHECKLIST AND GUIDE](#)

The RERH specifications and checklists take a builder and a project design team through the steps of assessing a home's solar resource potential and defining the minimum structural and system ...





Contact Us

For catalog requests, pricing, or partnerships, please visit:

<https://iwap.com.pl>

Phone: +34 919 456 782

Email: info@iwap.com.pl

Scan the QR code to access our WhatsApp.

