



Field iron shed communication base station lead-acid battery





Field iron shed communication base station lead-acid battery

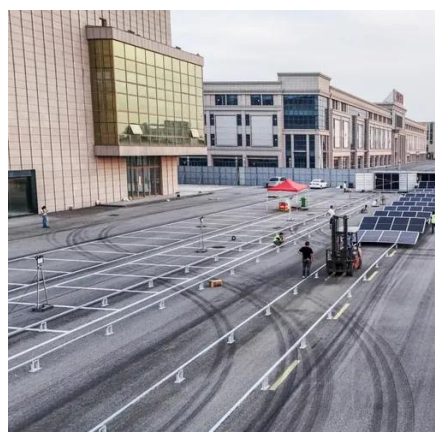


[The majority of lithium batteries used in communication base stations](#)

Application of 48V lithium ion battery in communication base station: The outdoor base station of Qiantangjiang Tourism Company adopts 150Ah integrated lithium iron phosphate battery as a pilot to ...

[THE 200AH COMMUNICATION BASE STATION BACKUP POWER ...](#)

What does the battery energy storage system of the Montenegro communication base station look like The containerized energy storage system is composed of an energy storage converter, lithium iron ...



[BATTERY TECHNOLOGY FOR COMMUNICATION BASE STATIONS](#)

Which Type of Lead-Acid Battery is Best for Communication Base Stations Lead-acid batteries, specifically Valve-Regulated Lead-Acid (VRLA) batteries, have proven to be an excellent solution for ...

[Why choose SVC 48V Lithium iron battery for Telecom base station?](#)

In other words, during the entire life cycle of a base station, if lead-acid batteries are used, the batteries need to be replaced, while lithium iron phosphate batteries do not need to be ...



Replacing lead-acid batteries with lithium iron phosphate batteries in

After years of development, the current battery technology used in the communication field includes not only traditional lead-acid battery technology, but also various new technologies ...



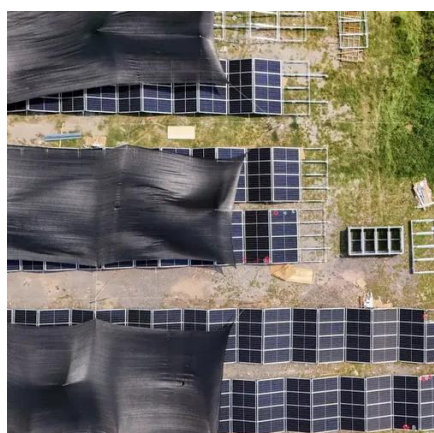
[From communication base station to emergency power supply lead ...](#)

In the energy system of modern society, although lead-acid batteries have been around for a long time, they continue to play an irreplaceable important role in key areas such as communication base ...



[Communication Batteries: Why Telecom Base Stations Have Unique ...](#)

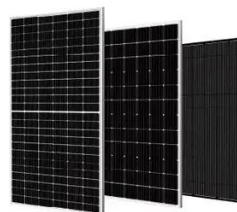
This article clarifies what communication batteries truly mean in the context of telecom base stations, why these applications have unique requirements, and which battery technologies are ...



[Communication base station lead-acid battery](#)



Types of Batteries Used in Telecom Systems: A Guide These batteries consist of lead dioxide and sponge lead, immersed in a sulfuric acid electrolyte. This simple design allows for efficient energy ...

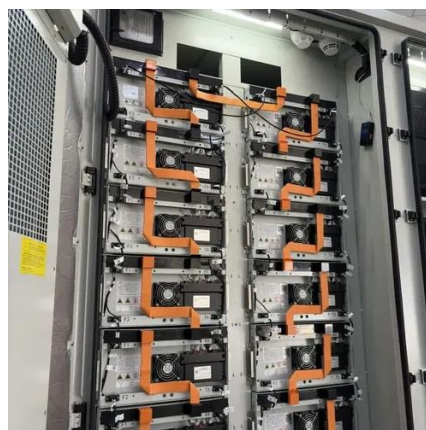


Telecommunication Battery

Valve-regulated sealed lead-acid batteries are currently the most mainstream and widely used lead-acid base station telecommunication batteries. These batteries consist of multiple battery ...

[Construction of battery equipment for communication base stations](#)

Among various battery technologies, Lithium Iron Phosphate (LiFePO4) batteries stand out as the ideal choice for telecom base station backup power due to their high safety, long lifespan, and excellent ...





Contact Us

For catalog requests, pricing, or partnerships, please visit:

<https://iwap.com.pl>

Phone: +34 919 456 782

Email: info@iwap.com.pl

Scan the QR code to access our WhatsApp.

