



# Explain the photovoltaic panel running line





## Overview

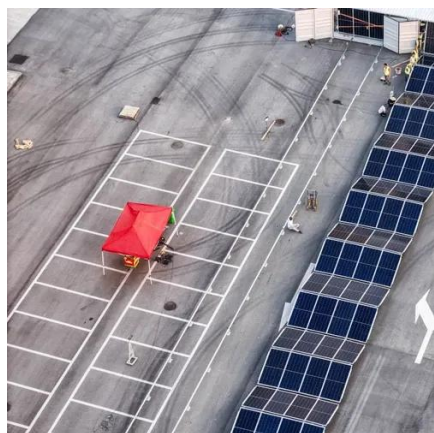
---

Below, we'll break down why cable run length and wire gauge (AWG) matter, how they affect voltage drop (and thus energy losses), and what steps you can take to optimize your setup. Look closely at a solar panel, and you'll see a series of thin metallic lines running across the surface. They're not there to look nice — they have a specific purpose. Those lines are called the grid lines, and they're actually doing some serious work to light your house and keep you cool during. Are you planning a DIY solar setup where your solar panels are quite a distance away from the rest of your equipment?

Then line loss is something you absolutely need to consider. In this guide, I'll walk you through how to use an online calculator that will give an estimate of line losses, and. Maximizing Solar Efficiency: A Practical Guide to PV Cable Run Length, Power Loss, and Wire Gauge When designing or upgrading a solar installation, one seemingly minor detail can have a huge impact on overall performance and ROI: the cables that connect your panels to the rest of the system. It is made up of small solar cells. This is a device that is used to convert solar photon energy into electrical energy.



## Explain the photovoltaic panel running line



### [Maximizing Solar Output: A Practical Guide to PV Cable Run Length](#)

Below, we'll break down why cable run length and wire gauge (AWG) matter, how they affect voltage drop (and thus energy losses), and what steps you can take to optimize your setup.

### [Maximizing Solar Output: A Practical Guide to PV ...](#)

Below, we'll break down why cable run length and wire gauge ...



### [Solar Cell: Working Principle & Construction \(Diagrams Included\)](#)

Working Principle: The working of solar cells involves light photons creating electron-hole pairs at the p-n junction, generating a voltage capable of driving a current across a connected load.



### [Why Do Photovoltaic Panels Have Grid Lines? , IWS](#)

Do all solar panels have a visible grid pattern? The answer lies in the way PV panels are designed and constructed. The white lines on photovoltaic modules serve one of three important purposes, ...



### [Solar Panel Wiring Basics: How to Wire Solar Panels](#)

Master solar panel wiring with this in-depth guide. Learn how to configure series and parallel connections, calculate voltage and current, and safely integrate inverters, charge controllers, and ...



### **Solar Power Grid Connection Explained**

Learn how solar power is connected to the electrical grid, how it works, and how net metering benefits homeowners. Discover the role of inverters and grid stability.



### [Long Solar Cable Run? Here's How to Minimize Line Loss](#)

Understanding line loss is crucial when setting up your solar power system. When electricity flows through a wire, some of it gets lost along the way, impacting the efficiency of your ...



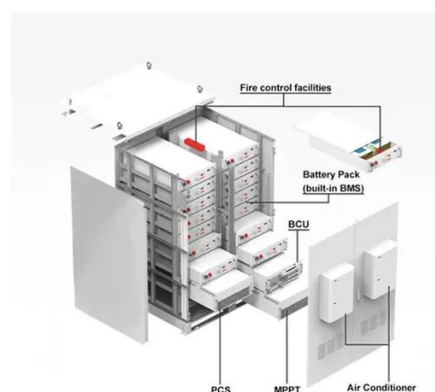
### [Explain the photovoltaic panel running line](#)



Grid-tied solar systems. Grid-tied systems are solar panel installations that are connected to the utility power grid. With a grid-connected system, a home can use the solar energy produced by



**2MW / 5MWh  
Customizable**

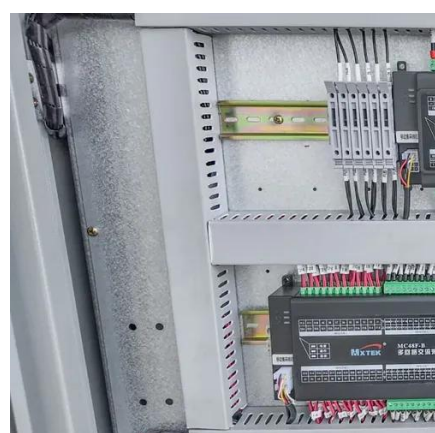


### [Solar Panel Wiring Basics: Wiring PV Panel In Series ...](#)

Learn solar panel wiring in series and parallel. Optimize your system by understanding voltage, current, and best wiring practices.

### [What Are The Grid Lines On Solar Panels For?](#)

Look closely at a solar panel, and you'll see a series of thin metallic lines running across the surface. They're not there to look nice -- they have a specific purpose.



### [How do solar panels work? Solar power explained](#)

At a high level, solar panels are made up of solar cells, which absorb sunlight. They use this sunlight to create direct current (DC) electricity through a process called "the photovoltaic effect."



## Contact Us

---

For catalog requests, pricing, or partnerships, please visit:

<https://iwap.com.pl>

Phone: +34 919 456 782

Email: [info@iwap.com.pl](mailto:info@iwap.com.pl)

Scan the QR code to access our WhatsApp.

