



Eve lifepo4 280ah prismatic cell





Eve lifepo4 280ah prismatic cell



(Pack of 4) EVE LF280K V3 Grade A Cells

The EVE LF280K LiFePO₄ Prismatic Cell is a high-capacity lithium iron phosphate (LiFePO₄) rechargeable battery, engineered for exceptional performance, safety, and longevity.

[EV Grade A+ EVE 3.2V 280Ah Rechargeable LiFePO₄ Battery Cell](#)

Grade HSEV are the best quality cells, which are sold in EVE official shop. HSEV cells have strict matching standard, so price is pretty high. EVE sell ESS cells to distributor such as Gobel Power. ...



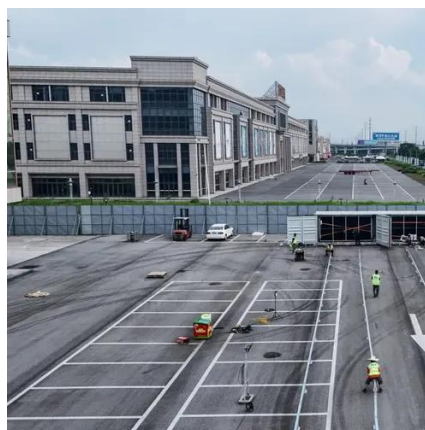
280Ah LiFePO₄ Battery

Discover the 280Ah LiFePO₄ prismatic cell with 6000 cycles, perfect for solar energy storage and off-grid systems. Grade A quality for reliable, long-lasting power.

[EVE LF280K 3.2V 280Ah LiFePO₄ Prismatic Battery](#)

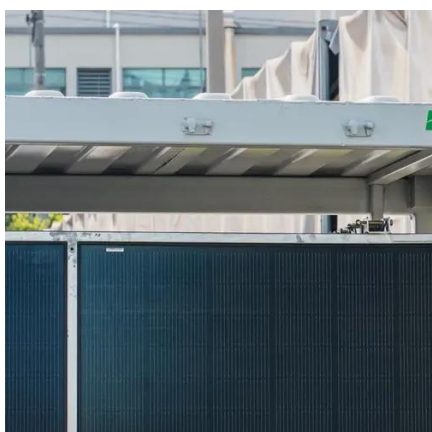
...

Factory sale grade A prismatic cells lifepo4 3.2v 280ah battery for energy storage and power lifepo4 battery



[Grade A , EVE 280Ah LiFePO4 Prismatic Battery Cells: Busbars and ...](#)

LiFePO4 Battery 3.2V EVE 280Ah Prismatic Cells deep Cycle for telecom ESS (Energy Storage System), grid ESS, household ESS, DIY solar battery, customized battery packs, energy back up, ...



EVE LiFePO4 Cell 3.2V 280Ah

Shop the EVE LF280K V3 LiFePO4 cell, a 3.2V 280Ah prismatic lithium battery with over 8000 cycles. Perfect for solar, EVs, and off-grid systems. Fast USA shipping.



[LF280K-V3-Prismatic LiFePO4 Battery Cells-EVE Energy](#)

EVE LF280K-V3 is a LiFePO4 battery cell designed and produced by the top lithium ion battery company. With 280Ah capacity, LF280K-V3 can be applied for electricity storage solutions.



EVE LiFePO4 280Ah Prismatic Cell



Brand New EVE LiFePO4 280Ah Prismatic Cell. Min. 4 * 280Ah EVE Cells in a Pack. 1 * Batterie Busbar for Each Cell. 2 * Metal Shims for Each Cell. 2 * Screws for Each Cell. Grade A LiFePO4 Cells. 5 ...



[\(Pack of 4\) EVE LF280K 280Ah 3.2V LiFePO4 Prismatic Battery](#)



Featuring a nominal capacity of 280Ah and capable of a continuous 1C (280A) charge/discharge rate -- with short bursts up to 2C (560A) -- this cell is built for performance. It supports up to 6,000 life ...

EVE 3.2V 280Ah Prismatic LiFePO4 cell

EVE 3.2V 280Ah Prismatic LiFePO4 cell. This battery is widely used in electric vehicles, electric motorcycles, solar power, energy storage, etc.



Voltage range: 91.2-947.2V

>6000 cycles (100% DOD)

Rated battery capacity: 216KWH (customizable)

EMS communication: 4G/CAN/RS485



Contact Us

For catalog requests, pricing, or partnerships, please visit:

<https://iwap.com.pl>

Phone: +34 919 456 782

Email: info@iwap.com.pl

Scan the QR code to access our WhatsApp.

