



Ev battery weight per kWh





Overview

One kWh of lithium-ion battery capacity weighs 15–20 lbs. A 100-kWh battery can be a 2,000-pound piece, depending upon the chemistry and packaging. A Tesla Model 3 Long Range, for example, mounts a battery pack of approximately 480 kg for a capacity of. The term electric car battery weight per kWh refers to how much a battery weighs for each kilowatt-hour (kWh) of energy it stores. However, newer battery chemistries such as solid-state batteries may have a lower weight per kWh. It is measured in kilowatt-hours (product of voltage and ampere-hours).



Ev battery weight per kWh

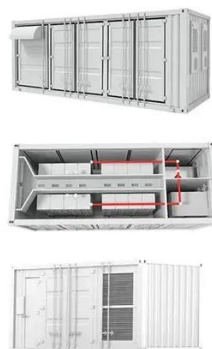


[How Much Does an Electric Car Battery Weigh: Everything You Need ...](#)

One kWh of lithium-ion battery capacity weighs 15-20 lbs. (6.8-9.1 kg). Which means: Normally, a 60-kWh battery is in the range of 900-1,200 pounds. A 100-kWh battery can be a 2,000-pound piece, ...

[How Much Do Electric Car Batteries Weigh?](#)

For the Model S, its earliest batteries didn't even weigh up to 1,000 pounds. Now, its 100kWh battery weighs 1,377 pounds.



How Heavy Is an Electric Car Battery?

The weight of an electric vehicle battery pack is directly tied to its energy capacity, measured in kilowatt-hours (kWh). For smaller, compact EVs, a battery pack with a capacity around ...

[EV Car Battery Capacity: kWh, Range & Health Guide 2025](#)

EV car battery capacity is the amount of energy the pack can store, measured in kilowatt-hours (kWh). More kWh generally means more potential range, but efficiency, driving speed, weather, and ...



[Electric car battery weight: kg, kWh and impact](#)

Today, in electric vehicles, battery packs are generally between 5 and 7 kg per kWh, with the most advanced designs dropping towards 5-6 kg/kWh. Tesla has demonstrated particular ...



Electric car battery weight explained

For example, 6 to 12 kilowatt-hour (kWh) batteries typically weigh between 100 and 150 kg, while 60 to 100-kWh batteries range from 350 to 600 kg. Of course, how heavy an EV battery is varies between ...



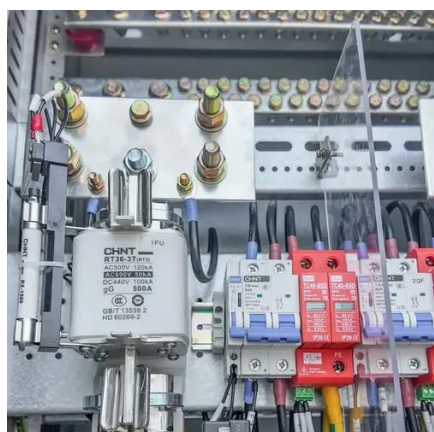
Electric Car Battery Weight Per kWh

On average, lithium-ion batteries used in electric cars have a weight of approximately 120-180 kilograms per kWh of capacity. However, newer battery chemistries such as solid-state batteries may have a ...

[A Complete Guide to EV Battery \(Size, Weight, Power & more\)](#)



The energy to weight ratio must be maintained for the performance and safety of an EV. A battery with a high energy density has a longer battery run when compared to its size.



[Electric Car Battery Weight Per kWh: What to Know](#)

What Does "Electric Car Battery Weight Per kWh" Mean? The term electric car battery weight per kWh refers to how much a battery weighs for each kilowatt-hour (kWh) of energy it stores.

[A Complete Guide to EV Battery \(Size, Weight, Power & more\)](#)

Ev Battery Characteristics
Battery Capacity
Rate
Weight
Size
Power
Conclusion
Battery capacity or Energy capacity is the ability of a battery to deliver a certain amount of power over a while. It is measured in kilowatt-hours (product of voltage and ampere-hours). It determines the energy available to the motor and other elements. The rate is dependent on the amount of current being transferred by the battery as the voltage See more on etechnophiles chargerigs



How Much Does an Electric Car Battery Weigh: ...

One kWh of lithium-ion battery capacity weighs 15-20 lbs. (6.8-9.1 kg). Which means: Normally, a 60-kWh battery is in the range of 900-1,200 ...

[Revealing the Truth About Electric Car Battery Weight per kWh](#)



On average, electric car batteries currently weigh around 30-40kg per kWh. However, this weight can vary depending on a variety of factors, including the specific type of battery used, the ...



Contact Us

For catalog requests, pricing, or partnerships, please visit:

<https://iwap.com.pl>

Phone: +34 919 456 782

Email: info@iwap.com.pl

Scan the QR code to access our WhatsApp.

