



Double-sided double-glass module installation

50KW modular power converter



Flexible Configuration

- Modular Design, Expanding as Required
- Small&Light, Wall Mounted
- Installed in Parallel for Expansion



Powerful Function

- Support PV+ESS
- Grid Support, Equipped with SVG Technology
- On-Grid and Off-Grid Operation



Reliable Protection

- Outdoor IP65 Design
- Sufficient Protection Functions Equipped





Overview

This general manual provides important safety information relating to the installation, maintenance and handling of double glass solar modules. Professional installer must read these guidelines carefully and strictly follow these instructions. Thanks for choosing Solarspace Solar PV modules. Failure to follow these instructions may result in. Manual refers to one or more dual glass serie ghts to change this INSTALLATION MANUAL without prior notice.



Double-sided double-glass module installation

SUPPORT REAL-TIME ONLINE
MONITORING OF SYSTEM STATUS



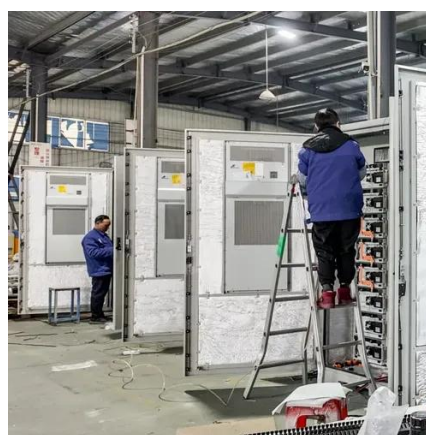
Double Glass Installation Manual

In order to ensure the PV modules are installed correctly, please read the following installation instructions carefully before modules are installed and used. Please remember that these products ...



Installation Manual for

In order to ensure the PV modules are installed correctly, please read the following installation instructions carefully before modules are installed and used. Please remember that these products ...



InstallationGuide for DASSOLAR ...

In order to extend the lifespan of the installation to the greatest extent, DAS Solar strongly recommends that anti-corrosive (stainless steel) fastenings should be used.

GENERAL INFORMATION

The word "module" or "PV module" used in this manual refers to one or more double glass solar modules. This manual is valid for the bifacial double glass module types



FLEXIBLE SETTING OF MULTIPLE WORKING MODES



[Solarspace Double Glass Photovoltaic Modules Installation Manual](#)

This guide contains information regarding the installation and safe handling of Solar- space photovoltaic module (hereafter is referred to as "module"). During Modules installation and routine maintenance, ...

[Double Glass Solar Modules Installation Manual](#)

The manual includes detailed sections on mechanical and electrical installation, grounding, and maintenance care, along with specific instructions for various installation methods.



[InstallationGuide for DASSOLAR DoubleGlassPhotovoltaicModule](#)

In order to extend the lifespan of the installation to the greatest extent, DAS Solar strongly recommends that anti-corrosive (stainless steel) fastenings should be used.



UL Dual Glass and Bifacial module



Before installation, make sure that the connector is well protected and there should be no foreign matter such as soil, sand and gravel in the connector. If any, it must be cleaned before ...



INSTALLATION MANUAL OF PHOTOVOLTAIC MODULE ...

Before installation, ensure that all modules and electrical contacts are clean and dry. If the modules are required to be stored temporarily, they should be stored under dry and ventilated conditions.



Installation Manual(Double glass PV module)

The installation of the modules shall be strictly carried out by professional technicians. Please read this manual carefully before installation.



Microsoft Word

Install and tighten the module clamps to the mounting rails using the torque stated by the mounting hardware manufacturer. The system designer and the installer are responsible for load calculations ...





Contact Us

For catalog requests, pricing, or partnerships, please visit:

<https://iwap.com.pl>

Phone: +34 919 456 782

Email: info@iwap.com.pl

Scan the QR code to access our WhatsApp.

